

LEGEND

- SET 1/2" IRON PIPE TAGGED R.C.E. 031931
- ⊙ SET 2-1/2" BRASS CAP TAGGED R.C.E. 031931
- △ FOUND 2-1/2" BRASS CAP PER 1994 C.L.O. PLAT
- SEARCHED FOR - NOTHING FOUND OR SET
- ⊙- FOUND MONUMENT AS NOTED
- ⊕- FOUND CAL-TRANS MONUMENT AS NOTED
- < > INDICATES RECORD DATA
- < > RECORD DATA PER Government Land Office (G.L.O.)
- < > RECORD DATA PER CASE 2, DR. 43, PG. 59. M.C.R.
- < > INDICATES RECORD DATA PER 1994 C.L.O. PLAT

CORNER NOTES

- FOUND SPIKE SET AT RECORD BEARING AND DISTANCE FROM PREVIOUS CORNER. REPLACED WITH BRASS CAP TAGGED R.C.E. 031931
- FOUND 2-1/2" BRASS CAP SET PER B.L.M. 1984 DEPENDENT SURVEY AND SUBDIVISION OF SECTION 13, TOWNSHIP 13 NORTH, RANGE 11 WEST, MOUNT DIABLO BASE & MERIDIAN
- FOUND ORIGINAL ROCK MOUND FOR SOUTH EAST CORNER OF SECTION 24. FIT TOPO CALLS TO RIDGES NORTH AND SOUTH AND SPRING TO WEST. SEE DETAIL A ON SHEET # 2.
- SEARCHED FOR ORIGINAL MONUMENT. NOTHING WAS FOUND OR SET. THIS POSITION IS BASED ON SINGLE PROPORTIONED MEASUREMENT.
- FOUND 3/4" IRON PIPE AND DEPRESSIONS FOR BEARING TREES FOR SOUTH WEST CORNER OF SECTION 24. THE ORIGINAL BEARING TREES WERE FOUND TO BE IN POOR CONDITION. BEARING TREES WERE RECORDED IN NOTES ON FILE AT THE COUNTY SURVEYOR'S OFFICE. THE NOTES ARE IN OLIVER HOWARD'S FIELDBOOK #6 ON PAGE 69 AND ARE KEPT IN A UNRECORDED FILE.
- POSITION ACCEPTED THIS SURVEY.
- FOUND SCRIBED REDWOOD STAKE IN PARTIAL MOUND OF STONES. SEE DETAIL B ON SHEET # 2. ACCEPTED AS BEST EVIDENCE OF WEST 1/4 CORNER OF SECTION 25.

BASIS OF BEARINGS

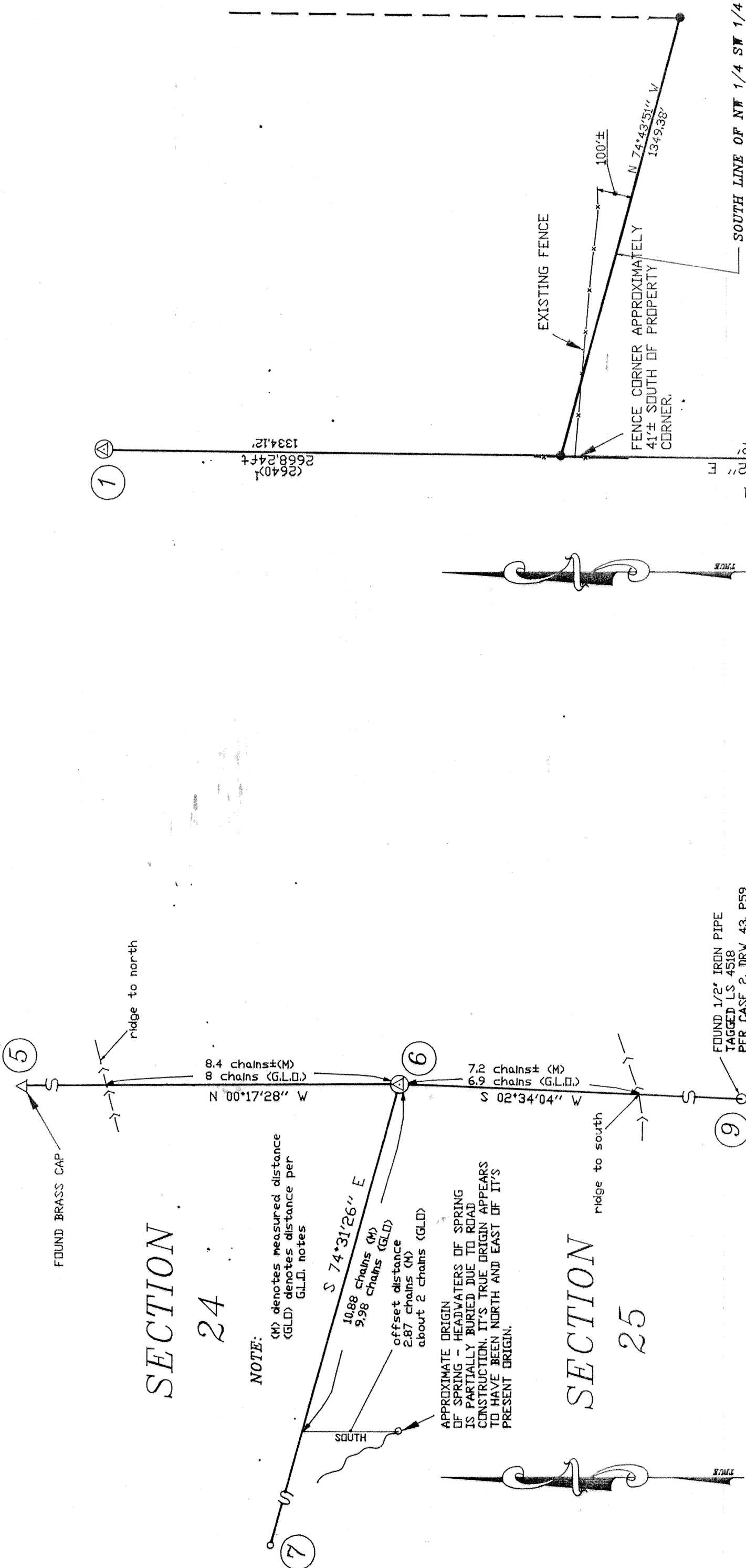
CALIFORNIA COORDINATE SYSTEM ZONE 2, NAD 83 FROM NATIONAL GEODETIC SURVEY MONUMENT HPON 0108 AND CAL-TRANS MONUMENT No. 42. DATA ON FILE AT CAL-TRANS OFFICE, FUREKA CALIFORNIA.

(SEE SHEET 1 OF 2)

RECORD OF SURVEY

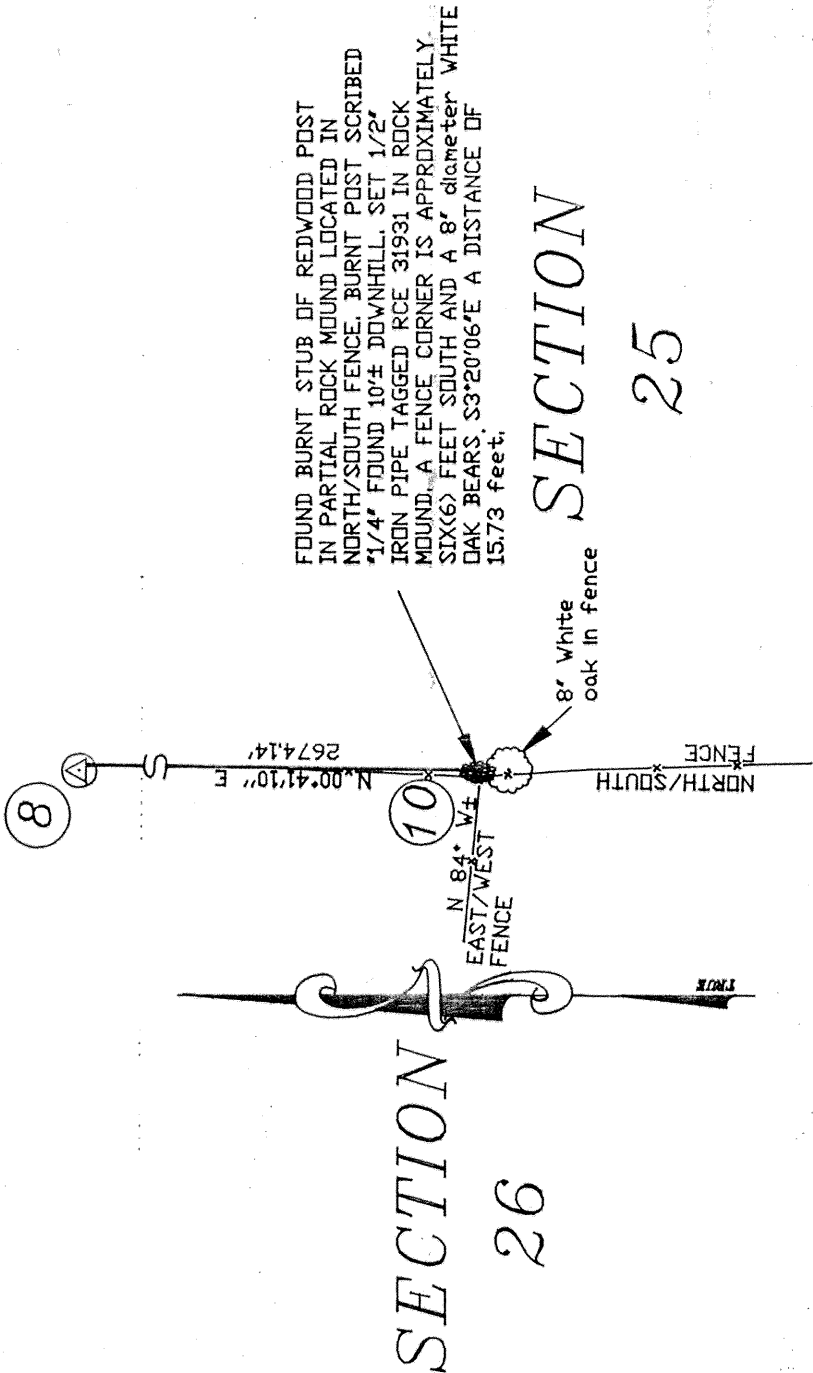
BEING THE SOUTH LINE OF THE NORTHWEST QUARTER OF THE SOUTHWEST QUARTER OF SECTION 24, TOWNSHIP 13 NORTH, RANGE 11 WEST, MOUNT DIABLO B.&M. MENDOCINO COUNTY, CALIFORNIA

#43



DETAIL "A"

N.T.S.



DETAIL "B"

N.T.S.

DETAIL "C"

N.T.S.

DETAIL SHEET

R0518-00