

**SURVEYOR'S CERTIFICATE**

This map correctly represents a survey made under my direction in conformance with the requirements of Chapter 15, Division 3 of the Business and Professions Code in June, 1966 at the request of Jack Bell.

*Gordon C. Holmes*  
GORDON C. HOLMES RCE 10467

**COUNTY SURVEYOR'S CERTIFICATE**

I have examined this map for conformance with the requirements of Chapter 15, Division 3 of the Business and Professions Code this \_\_\_\_\_ day of \_\_\_\_\_, 1966.

COUNTY SURVEYOR MONO COUNTY

2598

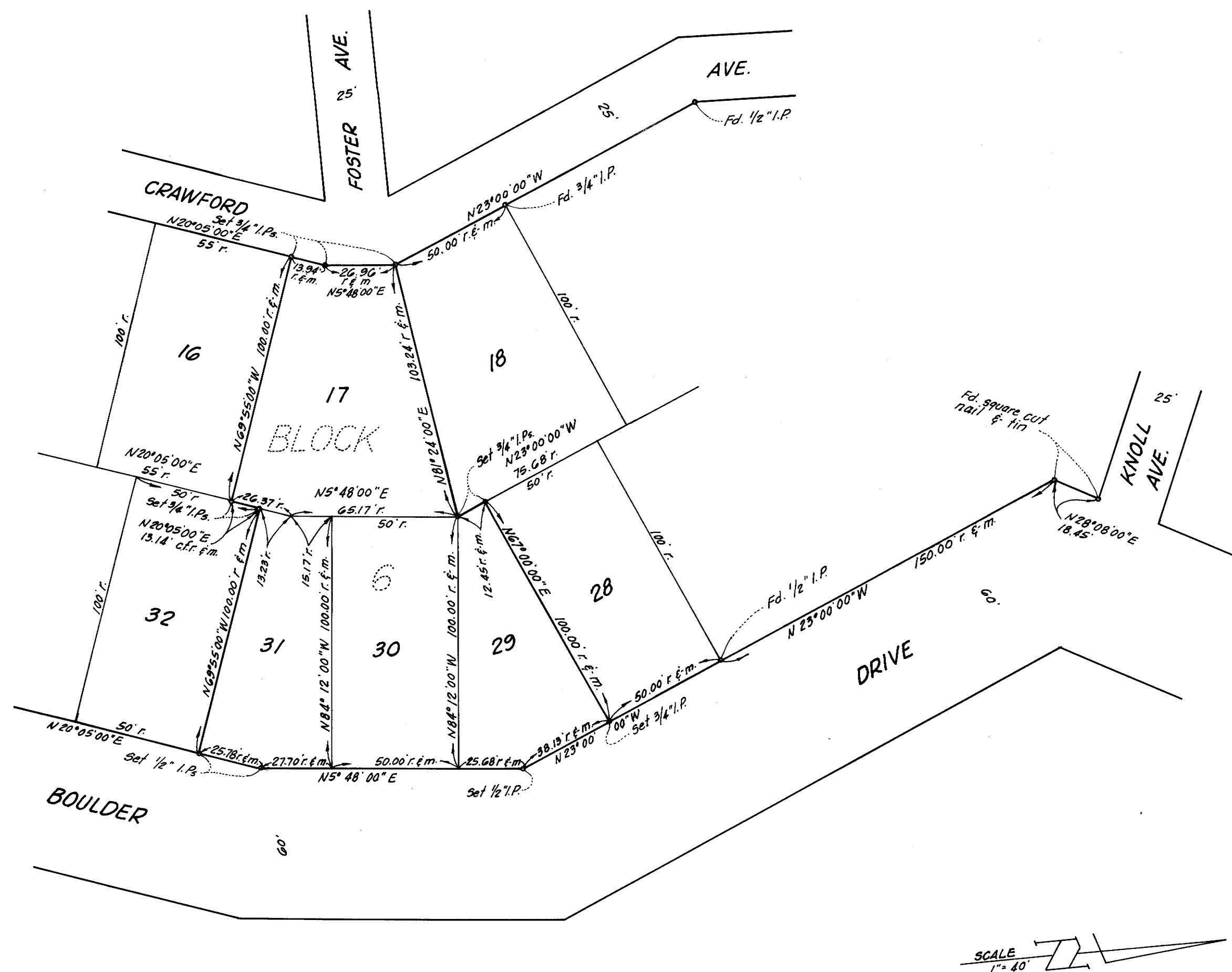
**COUNTY RECORDER'S CERTIFICATE**

Filed for record this 17 day of June, 1966 at 10:00 A.M. in Book 5 of Maps at page 271 at the request of Gordon C. Holmes.

*Quinn M. McKittrick*  
COUNTY RECORDER MONO COUNTY

**BASIS OF BEARINGS**

The bearings are based on the Northeasterly line of Boulder Drive from a found square cut nail & tin to a found 3/4" iron pipe being N23°00'00"W as shown on the map of Silver Lake Pines Tract N#1.



**RECORD OF SURVEY**

OF LOTS 17, 29, 30 AND 31, BLOCK G, SILVER LAKE PINES TRACT N#1, JUNE LAKE BEING IN A PORTION OF THE NE 1/4 OF THE NW 1/4 AND A PORTION OF NW 1/4 OF THE NW 1/4 OF SECTION 14, T2S, R26E M.D.B. & M. IN THE COUNTY OF MONO, CALIFORNIA