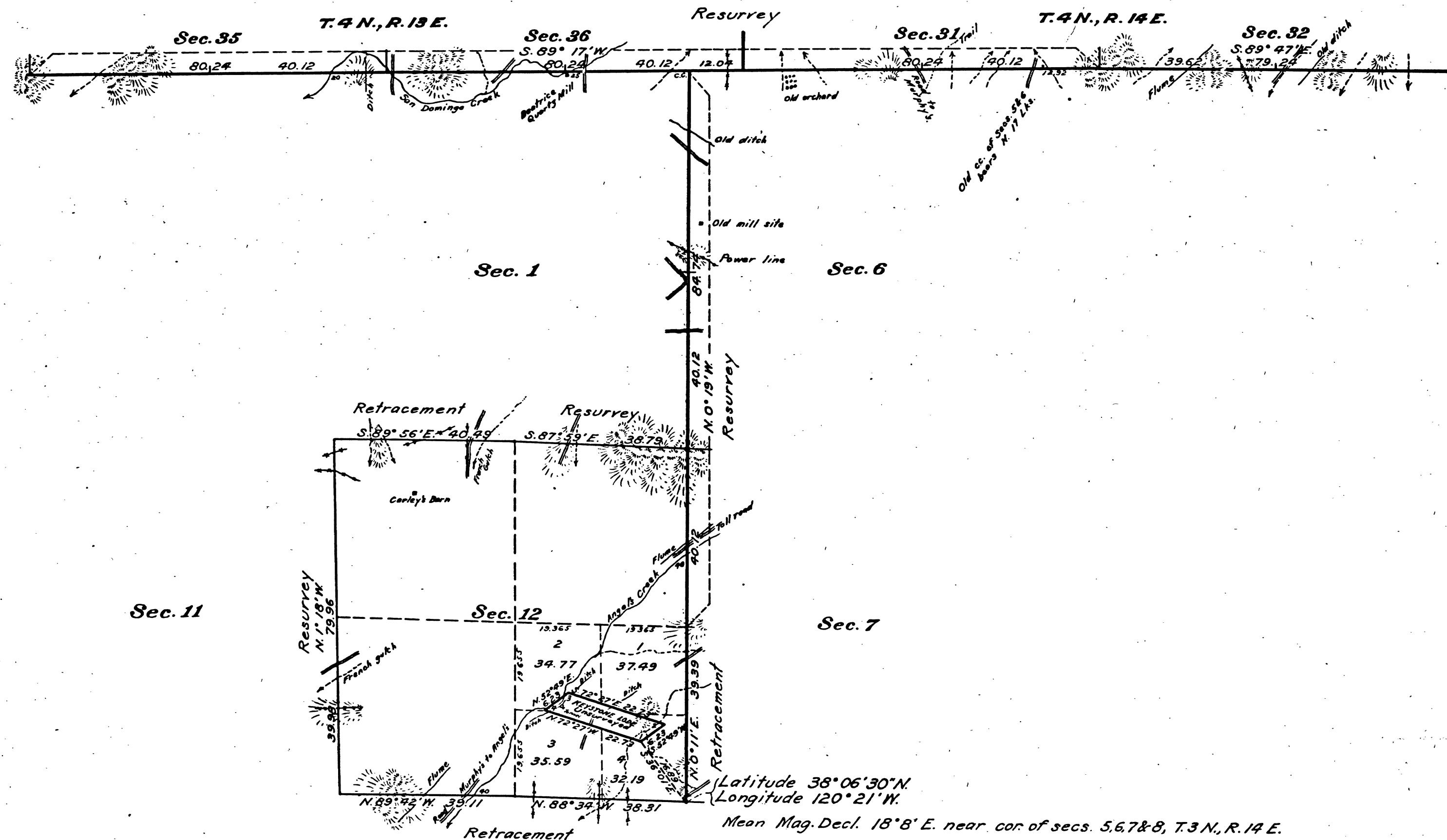


PLAT
showing the segregation of the
Keystone Lode
(Unsurveyed)
from the SW $\frac{1}{4}$ SE $\frac{1}{4}$ Sec. 12, T. 3 N., R. 13 E., M.D.M.

California

Scale 1 inch = 20 chains

Group No. 57



This segregation survey was authorized by letter Sacramento 08852 "E" C6T. of the Commissioner of the General Land Office dated January 7, 1918.

	Mls.	Chs.	Lks.
S. bdy. T. 4 N., Rgs. 13 & 14 E. (res.)	3	79	96
E. bdy. T. 3 N., R. 13 E. (ret. & res.)	2	4	25
Subdivisions (ret. & res.)	2	76	66
Keystone Lode, (Unsurveyed)		57	92
Connection		16	89

For lines previously surveyed see plat approved August 30, 1871.

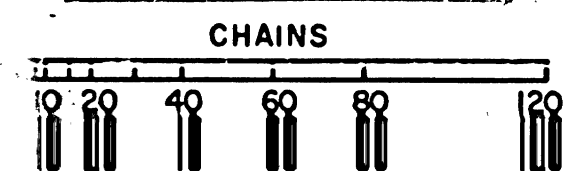
The above plat showing the segregation of the Keystone Lode from the SW $\frac{1}{4}$ SE $\frac{1}{4}$ Sec. 12, T. 3 N., R. 13 E., M. D. M., California, as surveyed by Guy Redwine, U.S. Cadastral Engineer, November 16 to December 5, 1918, under special instructions dated March 21, 1918, to accommodate Sacramento H.E. 08852 of William King; is strictly conformable to the field notes of the survey thereof on file in this office, which have been examined and approved.

U.S. Surveyor General's Office
San Francisco, California
July 29, 1919

John H. Moore
U.S. Surveyor General
for California

41 228

CHAINS



RECEIVED AND RECEIVER RECEIPT
APR 20 1920

T. 3 N. R. 13 E. M. D.

BLM 95