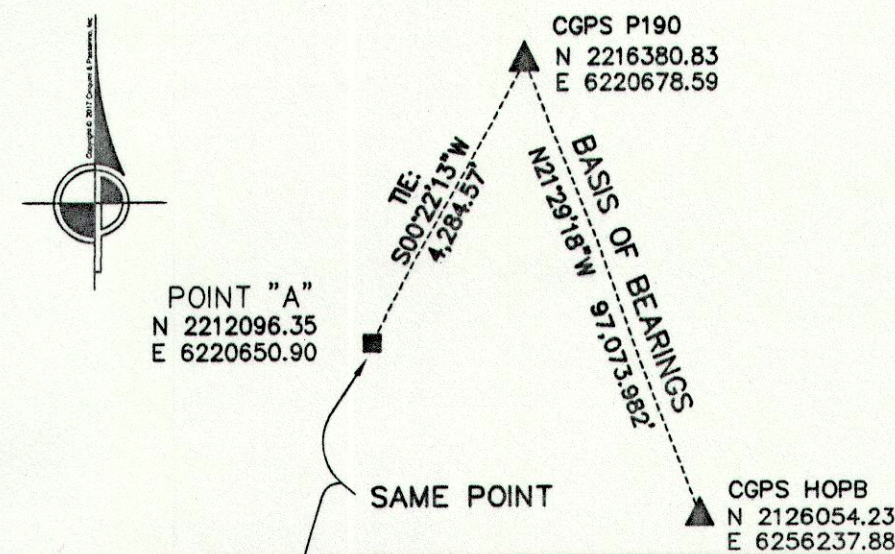


# SURVEY CONTROL NOT TO SCALE

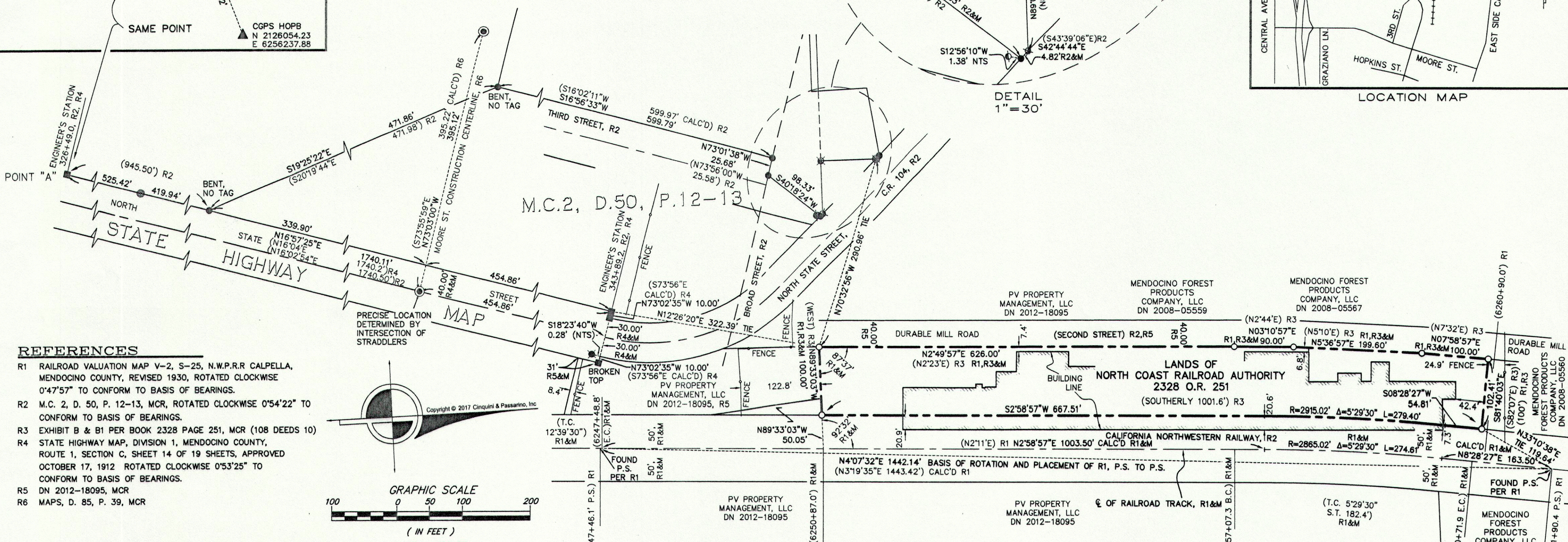
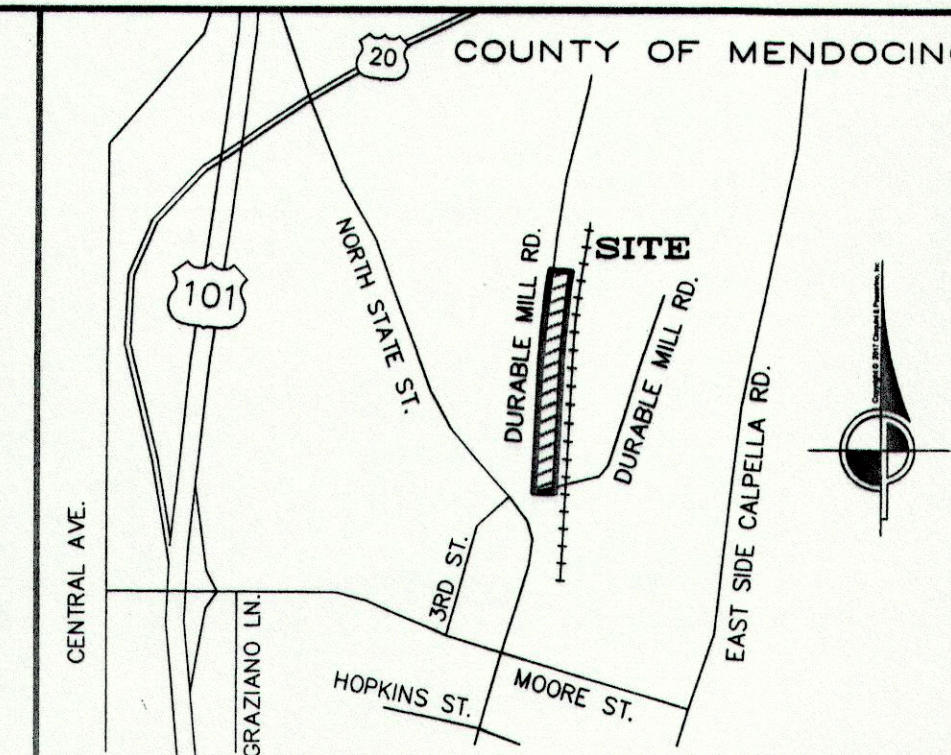


## BASIS OF BEARINGS

THE BASIS OF BEARINGS FOR THIS SURVEY IS THE CALIFORNIA COORDINATE SYSTEM, ZONE 2, NAD 83, EPOCH 2011.00 AS DETERMINED LOCALLY BY A LINE BETWEEN CONTINUOUS GLOBAL POSITIONING SYSTEMS (CGPS) STATION HOPB AND STATION P190; BEING NORTH 21°29'18" WEST AS DERIVED FROM GEODETIC VALUES PUBLISHED BY THE CALIFORNIA SPATIAL REFERENCE CENTER (CSRC).

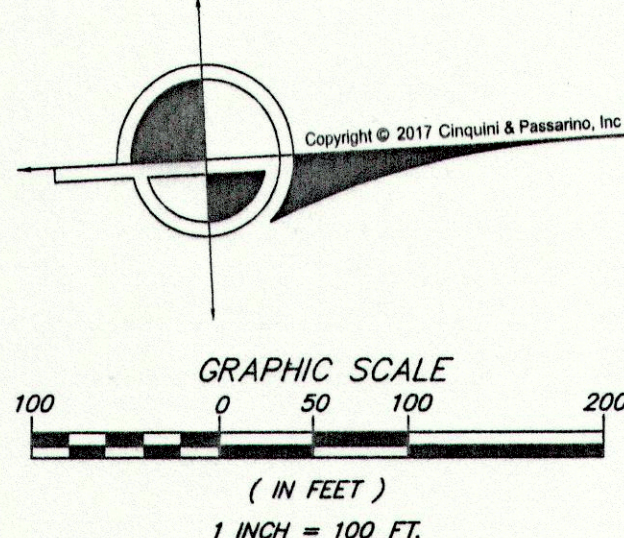
## NOTES

ALL DISTANCES AND DIMENSIONS ARE IN FEET AND DECIMALS THEREOF.  
ALL TIES ARE AT RIGHT ANGLES UNLESS OTHERWISE NOTED.



## REFERENCES

- R1 RAILROAD VALUATION MAP V-2, S-25, N.W.P.R.R CALPELLA, MENDOCINO COUNTY, REVISED 1930, ROTATED CLOCKWISE 0°47'57" TO CONFORM TO BASIS OF BEARINGS.
- R2 M.C. 2, D. 50, P. 12-13, MCR, ROTATED CLOCKWISE 0°54'22" TO CONFORM TO BASIS OF BEARINGS.
- R3 EXHIBIT B & B1 PER BOOK 2328 PAGE 251, MCR (108 DEEDS 10)
- R4 STATE HIGHWAY MAP, DIVISION 1, MENDOCINO COUNTY, ROUTE 1, SECTION C, SHEET 14 OF 19 SHEETS, APPROVED OCTOBER 17, 1912 ROTATED CLOCKWISE 0°53'25" TO CONFORM TO BASIS OF BEARINGS.
- R5 DN 2012-18095, MCR
- R6 MAPS, D. 85, P. 39, MCR



## LEGEND

- FOUND MONUMENT AS NOTED
- SET 1/2" IRON PIPE WITH CAP PLS 8301
- ▲ CGPS STATION AS NOTED
- B.C. BEGINNING OF CURVE
- CGPS CONTINUOUS GLOBAL POSITIONING SYSTEM
- CALC'D CALCULATED
- C.R. COUNTY ROAD
- DN DOCUMENT NUMBER
- E.C. END OF CURVE
- M MEASURED
- MCR MENDOCINO COUNTY RECORDS
- NTS NOT TO SCALE
- OR OFFICIAL RECORDS
- OU ORIGIN UNKNOWN
- P.S. POINT OF SWITCH
- ( ) RECORD DATA
- (R#) REFERENCE
- S.T. SEMI TANGENT
- T.C. TOTAL CURVE
- LINES MONUMENTED BY THIS SURVEY
- - - TIE
- CHAINLINK FENCE
- EXISTING OR FORMER PARCEL LINES
- CENTERLINE

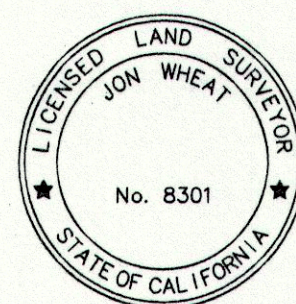
## SURVEYOR'S STATEMENT

THIS MAP CORRECTLY REPRESENTS A SURVEY MADE BY ME OR UNDER MY DIRECTION IN CONFORMANCE WITH THE REQUIREMENTS OF THE PROFESSIONAL LAND SURVEYORS' ACT AT THE REQUEST OF DAVID HODSON, IN SEPTEMBER 2017.

*Jon Wheat*  
Jon R. Wheat, P.L.S. 8301  
EXP. DATE 12/31/17

12-6-2017

DATE:



## MONUMENTS FOUND

- 1/2" IP, LS 4805, R2 OR AS NOTED
- ⊗ 3/4" IP, NO CAP, ACCEPTED AS PER R2
- ⊗ 1" IP, NO CAP, OU
- ⊗ 3/4" IP, LS 4805, ACCEPTED AS PER R2
- 6"x6" CONCRETE MONUMENT, ACCEPTED AS PER R4
- ⊗ 1" IP, 1.2 FEET BELOW, OU
- ⊗ 3/4" IP, RCE 15311, OU
- ⊗ 2" BRASS DISK IN 6" WELL, LS 7935, R6 OR AS NOTED

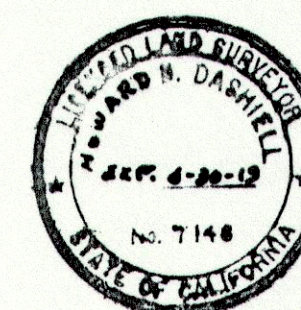
## COUNTY SURVEYOR'S STATEMENT

THIS MAP HAS BEEN EXAMINED IN ACCORDANCE WITH SECTION 8766 OF THE

PROFESSIONAL LAND SURVEYORS' ACT THIS 12 DAY OF

DECEMBER, 2017.

*Howard N. Dashiell*  
HOWARD N. DASHIELL, PLS 7148  
COUNTY SURVEYOR  
MENDOCINO COUNTY, CALIFORNIA



## RECORDER'S STATEMENT

FILED THIS 22<sup>ND</sup> DAY OF December, 2017, AT 10:09 AM. IN

MAPS, DRAWER 86, PAGE 73, M.C.R. AT THE REQUEST

OF JON R. WHEAT.

FEE: \$9.00

SUSAN M. RANOGAJAK  
COUNTY RECORDER  
MENDOCINO COUNTY, CALIFORNIA

*Marianna Alvarado*  
DEPUTY COUNTY RECORDER

# RECORD OF SURVEY

OF THE LANDS OF  
NORTH COAST RAILROAD AUTHORITY  
AS DESCRIBED AS EXHIBIT B & B1, IN BOOK 2328 O.R. PAGE 251, MCR

BEING A PORTION OF LOT 108, YOKAYO RANCHO, ALSO BEING A  
PORTION OF MAP OF CALPELLA, MAP BOOK 2, PAGE 182, MCR

COUNTY OF MENDOCINO STATE OF CALIFORNIA  
DATE: NOVEMBER 2017

**CINQUINI & PASSARINO, INC.**  
LAND SURVEYING

▲ BOUNDARY 1360 No. Dutton Ave.  
▲ TOPOGRAPHIC Santa Rosa, Ca. 95401  
▲ CONSTRUCTION Phone: (707) 542-6268  
▲ SUBDIVISIONS Fax: (707) 542-2106  
WWW.CINQUINIPASSARINO.COM

Serial #176

APN's 165-222-03 & -04

CPI FILE NO. 7789-17

SHEET 1 OF 1

MAPS 86  
DRAWER 73  
PAGE 73