

BL 22 Pg. 72

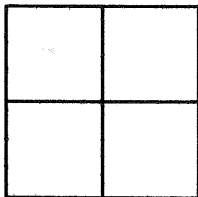
CORNER RECORD

Document Number CR 2500

City of BERKELEY

County of ALAMEDA, California

Brief Legal Description WELL MONUMENT LOCATED WITHIN SPRUCE ST.



CORNER RECORD

Government Corner ☐ Control ☐
Meander ☐ Property ☒
Rancho ☐ Other ☐
Date of Survey 08/23/2005

COORDINATES
(Optional)

N. _____
E. _____
Zone _____ Datum _____
Elev. _____

Corner — Left as found ☐ Found and tagged ☐ Established ☐ Reestablished ☒ Rebuilt ☐

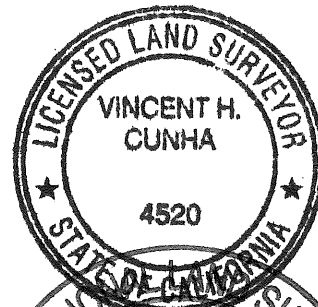
Identification and type of corner found: Evidence used to identify or procedure used to establish or reestablish the corner:
SET STANDARD COUNTY WELL MONUMENT 680'± NORTHEASTERLY OF THE
INTERSECTION OF SPRUCE ST. AND NORTHAMPTON AVE. LOCATED WITHIN SPRUCE ST.
STAMPED LS 4520

A description of the physical condition of the monument as found and as set or reset:
FOUND POINTS AS SHOWN ON PAGE 2.

SURVEYOR'S STATEMENT

This Corner Record was prepared by me or under my direction in conformance with
the Land Surveyors' Act on JUNE 2, 2005.

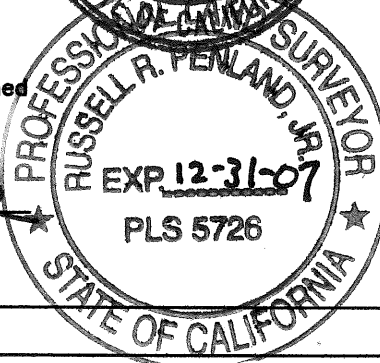
Signed Vincent H. Cunha L.S. Number LS 4520
VINCENT H. CUNHA EXPIRES 9/30/06



COUNTY SURVEYOR'S STATEMENT

This Corner Record was received July 20, 1905 and examined
and filed 12.3.2005.

Signed Russell R. Penland, Jr. Title COUNTY SURVEYOR



County Surveyor's Comment

prior CR 2426

LEGEND

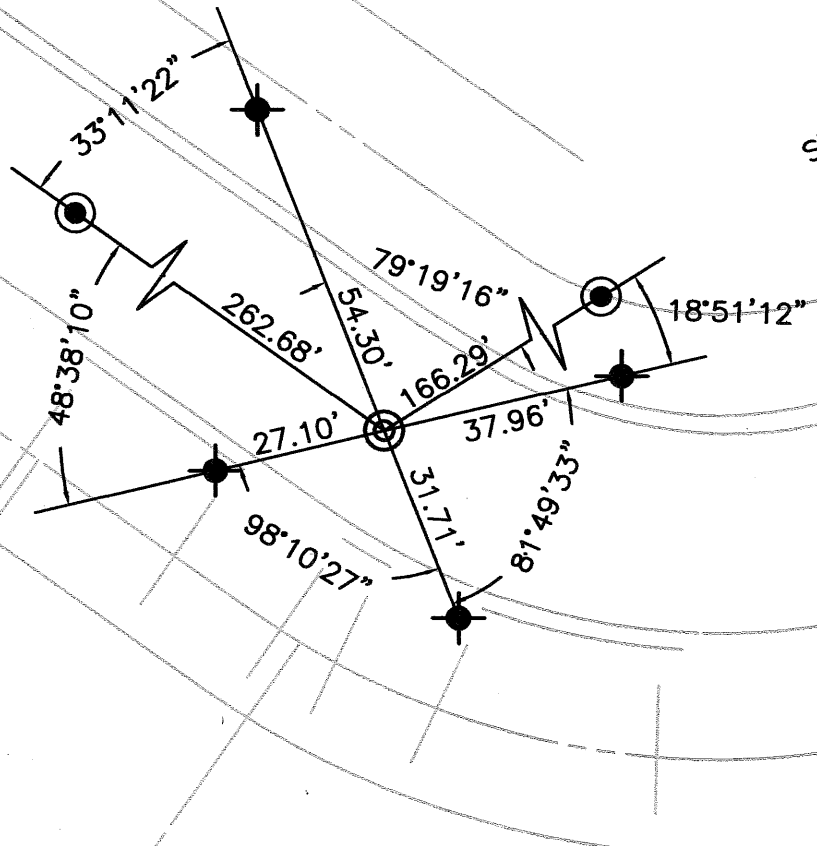
- ✕ FOUND CROSS
- FOUND STANDARD STREET MONUMENT
- ✕ FOUND NAIL AND TAG LS 4520
- ◎ SET STANDARD STREET MONUMENT STAMPED LS 4520

SCALE 1"=30'

SPRUCE ST.

SEE DETAIL

#543



REFERENCE

CORNER RECORD 2426, ALAMEDA COUNTY RECORDS