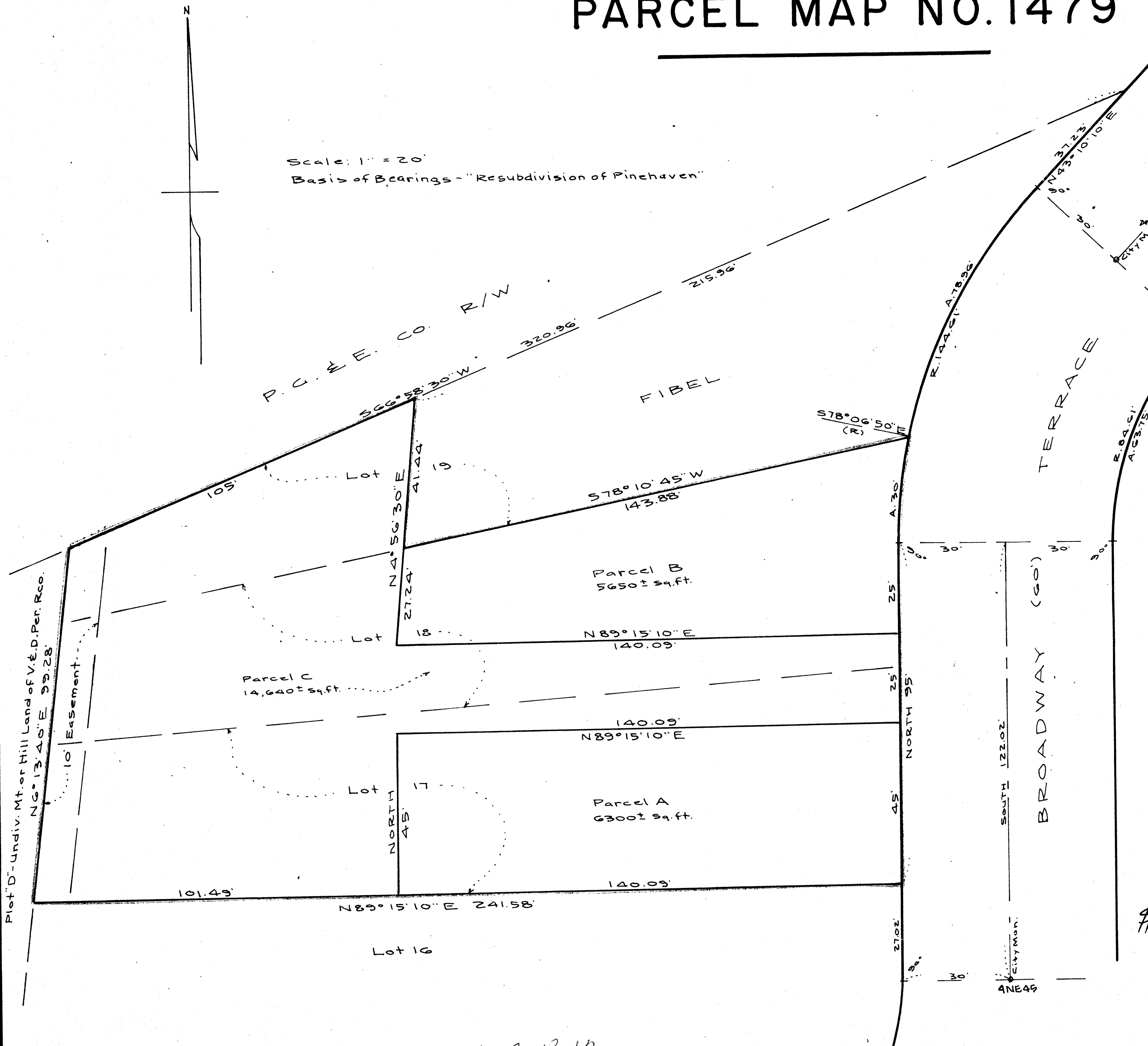


PARCEL MAP NO. 1479

*** USE WITH CAUTION ***
THIS IS A PUBLIC WORKS DEPARTMENT
WORKING COPY OF AN OFFICIAL MAP
ON FILE IN THE OFFICE OF THE COUNTY
RECORDER, COUNTY OF ALAMEDA. OF-
FICE INFORMATION OR CALCULATIONS
MAY HAVE BEEN ADDED HEREON.

Scale: 1" = 20'
Basis of Bearings - "Resubdivision of Pinehaven"



Parcel Map No. 1479 consists of Lots 17, 18 and a portion of Lot 19, Block "L", "A Resubdivision of Pinehaven, Oakland, Alameda County, California," filed March 16, 1923 in Book 3 of Maps, pages 53 and 54, Alameda County Records.

330 510

This map was prepared by me and was compiled from record data in conformance with the Subdivision Map Act at the request of Thomas P. Lam on May 5, 1974. I hereby certify that it conforms to the approved tentative map and the conditions of approval thereof; that all provisions of applicable state law and local ordinances have been complied with.

V. R. Soderlund, Licensed Land Surveyor No. 2470
4330 Piedmont Avenue, Oakland, California.

Owners - Thomas P. Lam and Dorcy G. Lam
4424 Anderson Avenue, Oakland, California,
by deed under Recorder's Series No. 74-39886

This map has been examined this 18TH day of SEPTEMBER, 1974 for its conformance with the requirements of Section 11575 of the Subdivision Map Act.

Walter S. Jallott ASSISTANT CITY ENGINEER, R.E. NO. 7947, FOR JAMES E. MCCARTY,
City Engineer, R.E. No. 7609

74-122667
Filed this 20TH day of SEPTEMBER, 1974, at 10:00A m, in
Book 84 of Maps at page 42,
at the request of V. R. SODERLUND

Jack G. Blue, County Recorder of Alameda County
By: Am. T. ...
DEPUTY

2-P-12

FILED 9-20-74 84/42
OK 84 ON 42