

D

C

B

A

1

2

3

4

5

KEYED NOTES

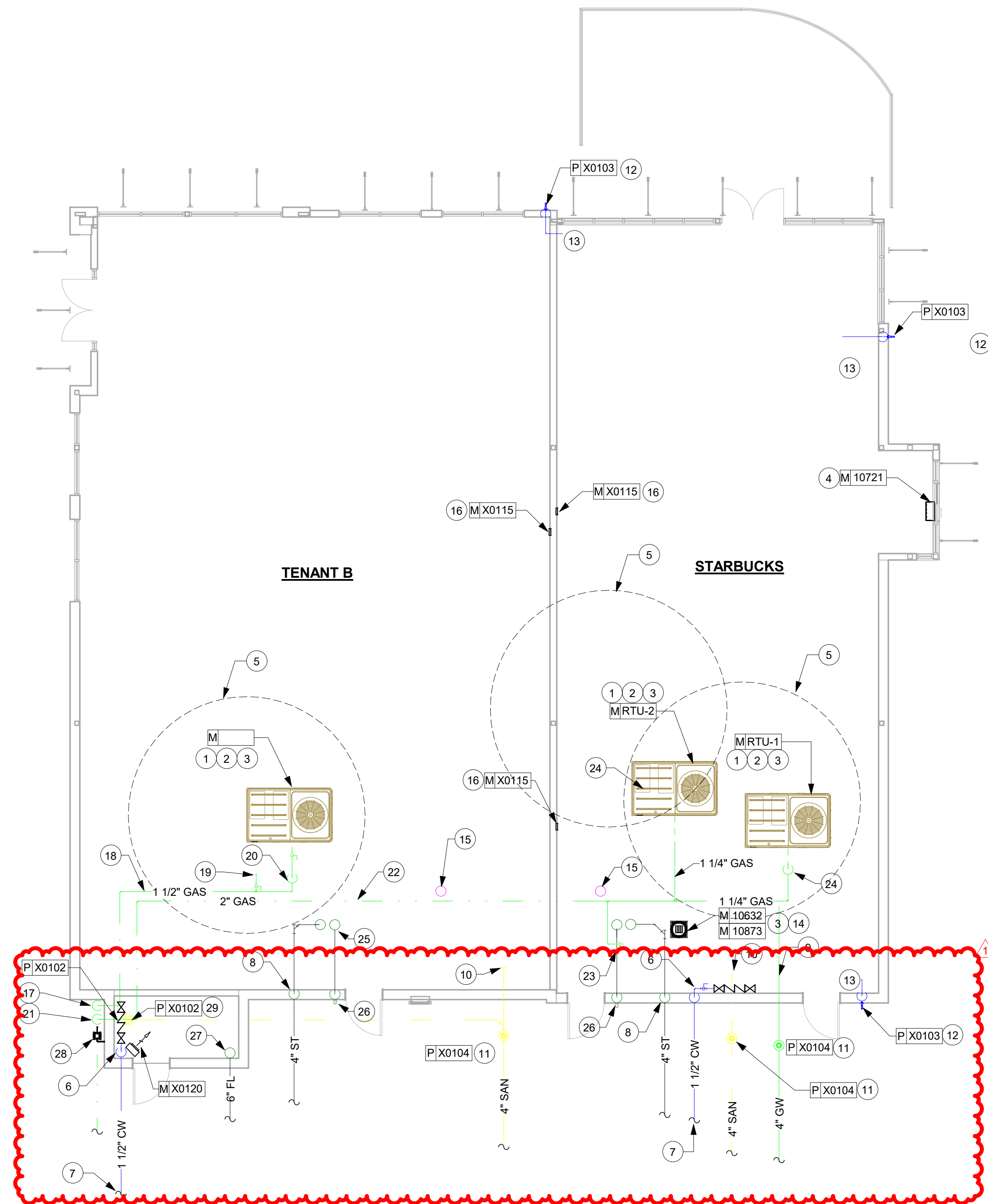
- COORDINATE WITH ELECTRICAL CONTRACTOR FOR POWER CONNECTION TO ALL MECHANICAL EQUIPMENT.
- ROOFTOP AC UNIT PROVIDED AND INSTALLED BY MECHANICAL CONTRACTOR. VERIFY EXACT UNIT SIZE AND LOCATION WITH TENANT CONSTRUCTION DOCUMENTS PRIOR TO START OF ANY WORK. VERIFY THAT OUTSIDE AIR INTAKE IS LOCATED A MINIMUM OF 10'-0" FROM ANY VENT OR EXHAUST OPENINGS. CONTRACTOR SHALL PROVIDE SUPPLY AND RETURN DUCT DROPS FROM RTU THAT ARE A MIN. 36" BELOW BOTTOM OF CEILING JOIST. CONTRACTOR SHALL PROVIDE AND INSTALL DUCT SMOKE DETECTOR MOUNTED IN SUPPLY DUCT DROP. SMOKE DETECTOR SHALL DE-ENERGIZE UNIT UPON DETECTION OF SMOKE. VERIFY ALL REQUIREMENT WITH LOCAL CODES. PROVIDE WITH SLEEPERS, CURBS, AND PADS PER MANUFACTURER'S RECOMMENDATIONS.
- REFER TO DETAILS ON DRAWING M1002 FOR FURTHER INFORMATION.
- PROVIDE AIR CURTAIN/FLY FAN AT DRIVE THRU WINDOW.
- 10'-0" CLEARANCE FOR OUTSIDE AIR INTAKE.
- ROUTE 1-1/2" COLD WATER INTO SPACE AS SHOWN. PROVIDE SHUT OFF VALVE, BACKFLOW PREVENTOR AND CAP FOR FUTURE EXTENSION.
- ROUTE 1 1/2" CW BELOW GRADE. COORDINATE WITH CIVIL/SITE PLAN FOR FURTHER INFORMATION.
- ROUTE 4" STORM LINE DOWN FOR AS SHOWN FOR CONNECTION TO SITE STORM LINE. VERIFY EXACT LOCATION WITH CIVIL/UTILITIES PLAN.
- 4" GREASE WASTE STUB-UP FOR FUTURE TENANT.
- 4" SANITARY WASTE STUB-UP FOR FUTURE TENANT.
- CONTRACTOR SHALL PROVIDE AND INSTALL GRADE CLEANOUT ON WASTE/GREASE PIPING.
- ROUTE 3/4" CW DOWN IN WALL FROM CEILING SPACE AND CONNECT TO RECESSED WALL HYDRANT. COORDINATE WITH ARCHITECTURAL PLANS FOR EXACT LOCATION.
- PROVIDE 3/4" CW WITH SHUT-OFF VALVE AND CAP 1'-0" BELOW ROOF DECK IN CEILING SPACE FOR FUTURE USE
- EXHAUST FAN TO BE PLACED ON ROOF WITH ROOF CURB IN LOCATION SHOWN. VERIFY THAT IT IS LOCATED 10'-0" AWAY FROM ANY OUTSIDE AIR INTAKES.
- 3" VENT THRU ROOF. PROVIDE WITH FLASHED ROOF PENETRATION. LOCATE MINIMUM OF 10'-0" FROM ANY OUTSIDE AIR INTAKES. CAPPED FOR FUTURE USE.
- CONTRACTOR SHALL PROVIDE AND INSTALL TEMPORARY TEMPERATURE THERMOSTATS AS SHOWN. THERMOSTATS SHALL BE PROVIDED WITH 150'-0" OF THERMOSTAT CABLE FOR FUTURE RELOCATION.
- 1 1/2" GAS LINE PIPING UP ALONG SIDE OF BUILDING TO UNDERSIDE OF ROOF STRUCTURE. ROUTE ALL GAS PIPING IN CEILING SPACE. GAS PIPING SHALL BE HELD TIGHT TO STRUCTURE.
- 1 1/2" GAS PIPING SHALL BE ROUTED TIGHT TO STRUCTURE.
- 3/4" GAS LINE WITH SHUT-OFF VALVE AND CAPPED FOR FUTURE CONNECTION.
- EXTEND 1 1/4" GAS LINE UP THRU PIPE CURB AND EXTEND AS SHOWN FOR CONNECTION TO ROOFTOP UNIT WITH UNION, SHUT-OFF VALVE AND DIRT LEG. MAKE CONNECTION TO UNIT PER MANUFACTURER RECOMMENDATIONS.
- 2" GAS LINE PIPING UP ALONG SIDE OF BUILDING TO UNDERSIDE OF ROOF STRUCTURE. ROUTE ALL GAS PIPING IN CEILING SPACE. GAS PIPING SHALL BE HELD TIGHT TO STRUCTURE.
- 2" GAS PIPING SHALL BE ROUTED TIGHT TO STRUCTURE.
- 1" GAS LINE WITH SHUT-OFF VALVE AND CAPPED FOR FUTURE CONNECTION.
- EXTEND 1 1/4" GAS LINE UP THRU PIPE CURB AND EXTEND AS SHOWN FOR CONNECTION TO ROOFTOP UNIT WITH UNION, SHUT-OFF VALVE AND DIRT LEG. MAKE CONNECTION TO UNIT PER MANUFACTURER RECOMMENDATIONS.
- 4" ROOF DRAIN AND EMERGENCY OVERFLOW DRAIN.
- ROUTE 4" OVERFLOW EMERGENCY DRAIN DOWN IN WALL AND CONNECT TO DOWNSPOUT NOZZLE.
- ROUTE 6" FIRE LINE UP TO AND TERMINATE AT BLIND FLANGE FOR FUTURE CONNECTION.
- STACKED GAS METERS FOR INCOMING CONNECTION AND DISTRIBUTION.
- CONNECT 3" FLOOR DRAIN TO SANITARY MAIN.

EXACT ROOFTOP EQUIPMENT SPECIFICATIONS AND LOCATIONS TO BE COORDINATED BY GC WITH TENANT INTERIORS DRAWINGS.

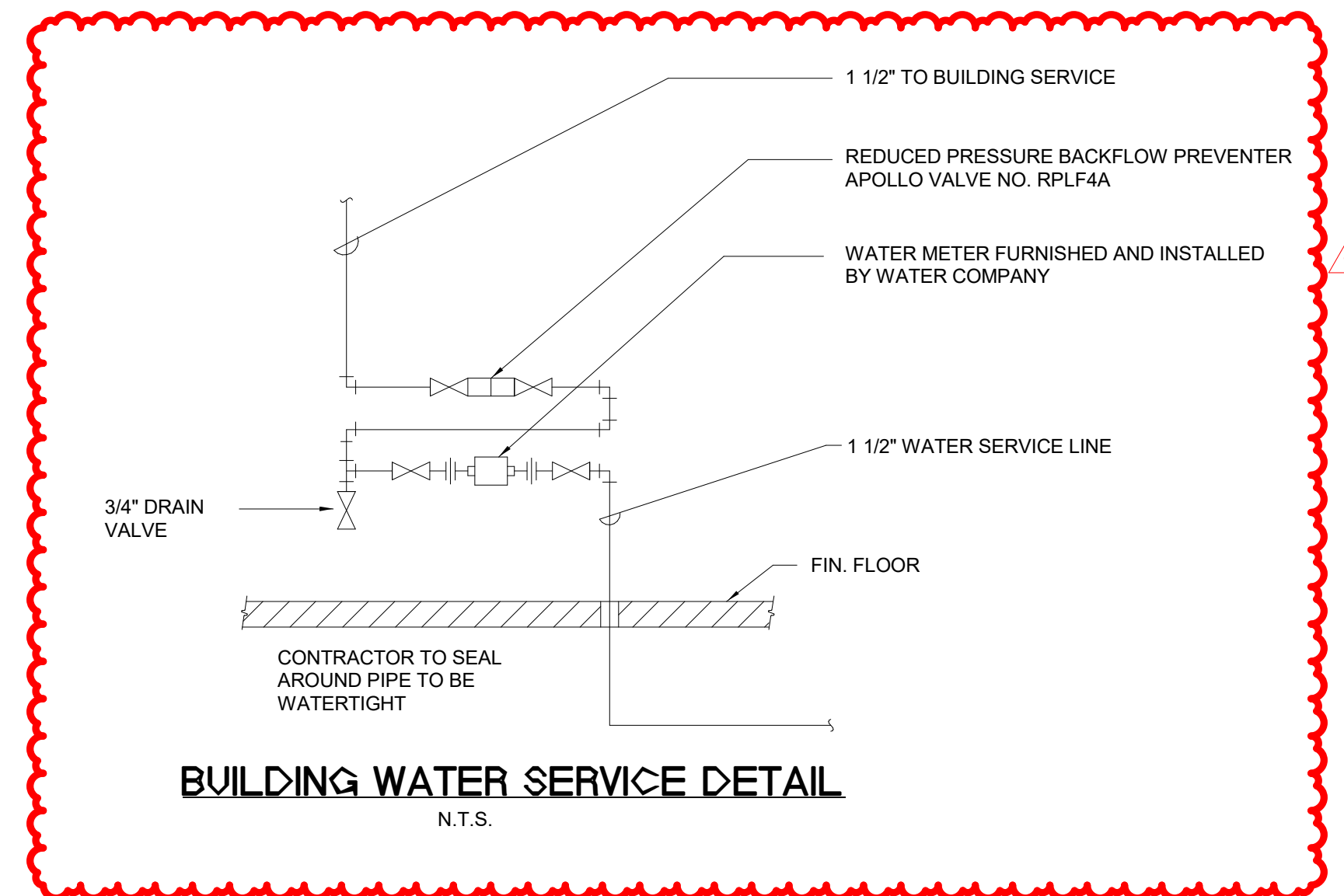
PROVIDE TEMPORARY WATER IF WATER IS NOT AVAILABLE AT POSSESSION.

RTU-1 & RTU-2
APPROXIMATE GAS REQUIREMENTS:
SYSTEM IS SIZED FROM LOW PRESSURE
GAS (7.5" W.C. AT 0.3" W.C. PRESSURE DROP)
OVERALL SYSTEM LENGTH OF 150'
RTU-1 = 250.0 MBH
RTU-2 = 250.0 MBH
FUTURE WATER HEATER = 150.0 MBH
TOTAL = 650.0 MBH

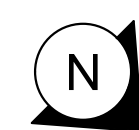
RTU-3
APPROXIMATE GAS REQUIREMENTS:
SYSTEM IS SIZED FROM LOW PRESSURE
GAS (7.5" W.C. AT 0.3" W.C. PRESSURE DROP)
OVERALL SYSTEM LENGTH OF 100'
RTU-3 = 250.0 MBH
FUTURE WATER HEATER = 150.0 MBH
TOTAL = 400.0 MBH



1 MECHANICAL/PLUMBING PLAN
Scale: 1/8" = 1'-0"



0 4' 8' 16'
Scale: 1/8" = 1'-0"



REV.	DATE	DESCRIPTION
1	08/27/2021	BUILDING DEPARTMENT REVISIONS



MARIETTA HWY & I-575
5068 MARIETTA HIGHWAY
CANTON, GA 30114

**MECHANICAL AND PLUMBING
PLAN**

ISSUED FOR CONSTRUCTION	DATE
BID	
PROJECT MANAGER	DESIGNER
AK	RV

JOB NO.
2020379.07

M1001

DESIGN ID	MANUFACTURER	MODEL	COOLING(MBH)92.5°F OA, 78.5° DB, AND 67.3°F WB					HEATING(MBH)				ECONOMIZER	DCV	VOLTAGE/PHASE/MCA/MOCP	INDOOR FAN SPEEDS	BLOWER HP	BLOWER CFM	BLOWER ESP/PWG	UNIT WEIGHT(LBS.)	NOTES
			COOLING STAGES	TOTAL	SENSIBLE	IEER	EER	HEATING TYPE	HEATING CAPACITY	STAGES	HEATING EFFICIENCY %									
RTU-1	TRANE	YHC120F	2	115.55	88.43	15.2	12.4	GAS	250	80	YES	208/3/48/60	2	2.75	4000	1.0	1.530	NOTES: 1, 2, 3, 4, 5, 6, 7, 8 & 9		
RTU-2	TRANE	YHC120F	2	115.55	88.43	15.2	12.4	GAS	250	80	YES	208/3/48/60	2	2.75	4000	1.0	1.530	NOTES: 1, 2, 3, 4, 5, 6, 7, 8 & 9		

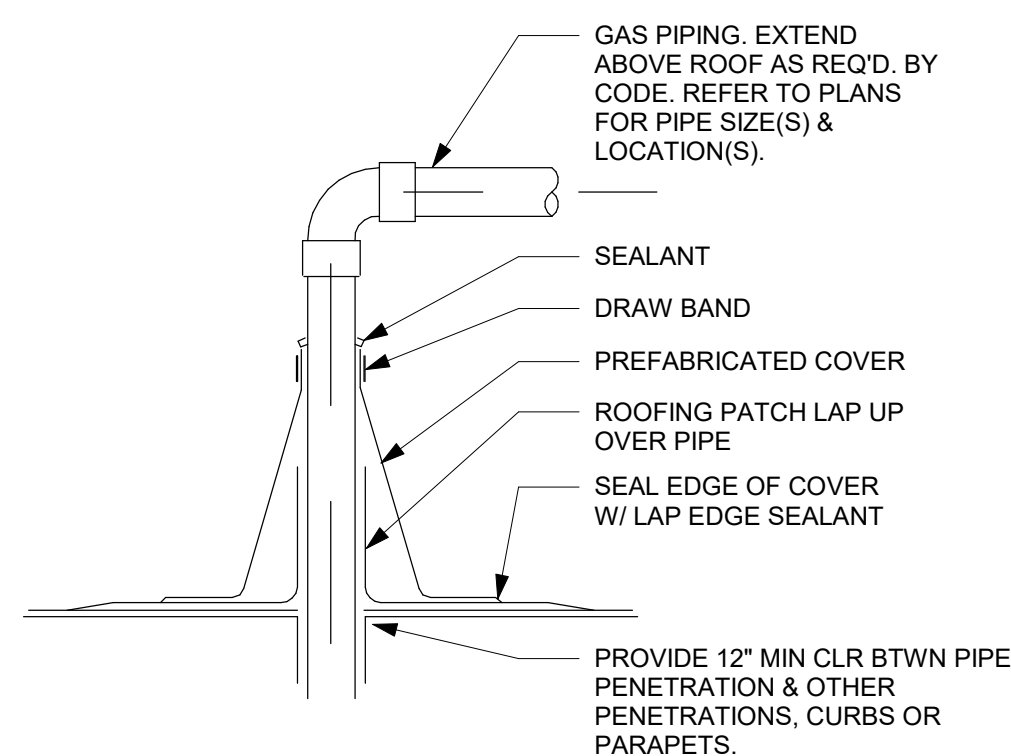
NOTES:

- FACTORY MOUNTED, NON-FUSED DISCONNECT SWITCH AND SINGLE POINT POWER CONNECTION
- 14" HIGH, INSULATED FACTORY ROOF CURB
- THRU BASE ELECTRICAL CONNECTIONS
- PROVIDE 7 DAY PROGRAMMABLE THERMOSTAT WITH 150°-0V LOW VOLTAGE THERMOSTAT CABLE. CABLE WILL BE LOOPED AND LEFT IN CEILING SPACE.
- HAIL GUARDS ON CONDENSER COILS
- HINGED ACCESS DOORS
- NON-POWERED CONVENIENCE OUTLET
- SINGLE EXHAUSTY PUFF BULB ECONOMIZER AND POWER EXHAUST.
- FACTORY MOUNTED SUPPLY AIR SMOKE DETECTOR

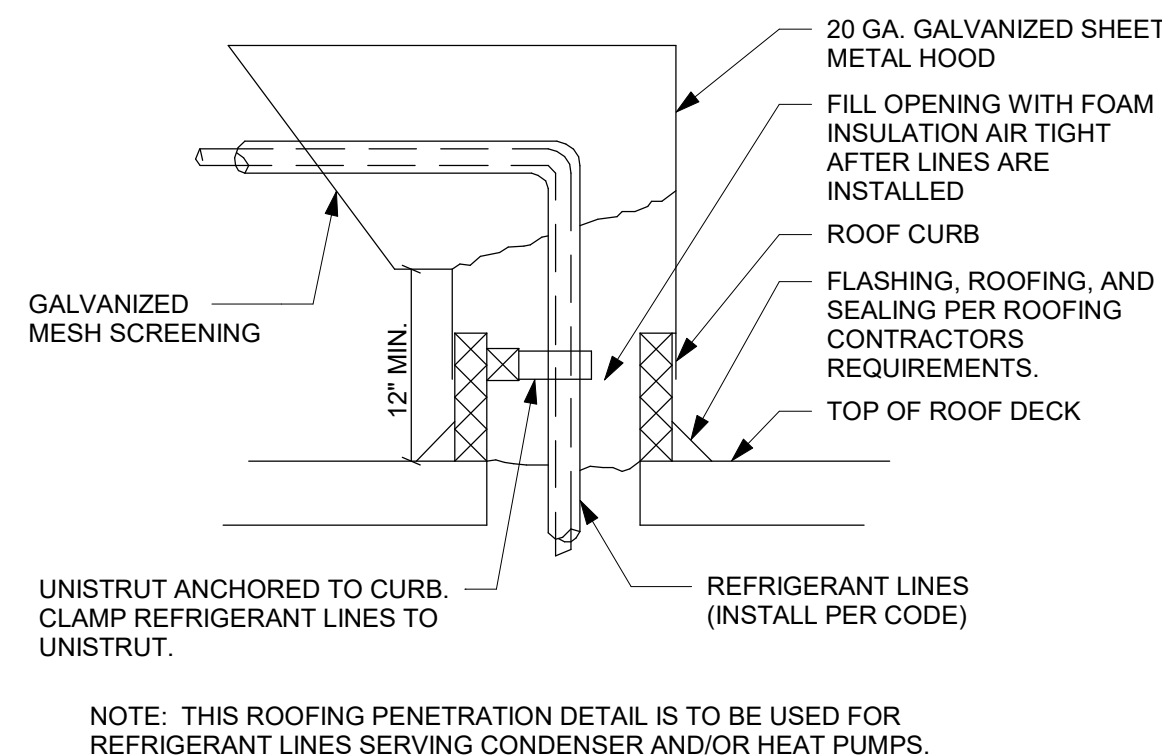
THERMOSTAT/SENSOR SCHEDULE SHELL			
DESIGN ID	COUNT	DESCRIPTION	COMMENTS
X0120	1	UNIT HEATER	TRANE UHEC-051B0C0, SPOT MOUNTED REMOTE UNIT HEATER, 208V/1PH/60, 3.7KW, 400 CFM, 20.9 AMPS, 12,800 BTUH, CEILING MOUNTING BRACKET WITH REMOTE THERMOSTAT, ELECTRIC HEATER FURNISHED AND INSTALLED BY MECHANICAL CONTRACTOR AND WIRED BY ELECTRICAL CONTRACTOR. ALL FINAL CONNECTIONS, PER MANUFACTURER RECOMMENDATIONS. HIGH-LIMIT CUT-OFF, AUTOMATIC FAN DELAY, MANUAL RESET THERMAL OVERHEAT PROTECTION, ON-OFF SWITCH.

FAN SCHEDULE SHELL										
DESIGN ID	Count	DESCRIPTION	MANUFACTURER	MODEL	VOLTAGE/PHASE/FLA(AMPS)	BLOWER HP	BLOWER	BLOWER ESP*WG	UNIT WEIGHT(LBS.)	NOTES
10632	1	FAN--RESTROOM EXHAUST	GREENHECK	G-80-VG	115/1/1.38	1/10	300 CFM	0.5	30	PROVIDE WITH DISCONNECT AND BIRDSCREEN
10721	1	FAN - DT AIR CURTAIN . 22IN 560MM	READYACCESS	AA100	120/1/3	NA	600 FPM	NA	NA	INCLUDE AS PART OF DT WINDOW PACKAGE
10873	1	FAN - RESTROOM EXHAUST ROOF CURB AND DAMPER	GREENHECK	GPI-17-G12	NA	NA	NA	NA	14	PROVIDE WITH GREENHECK WID-100-PB 10x10 BACKDRAFT DAMPER.

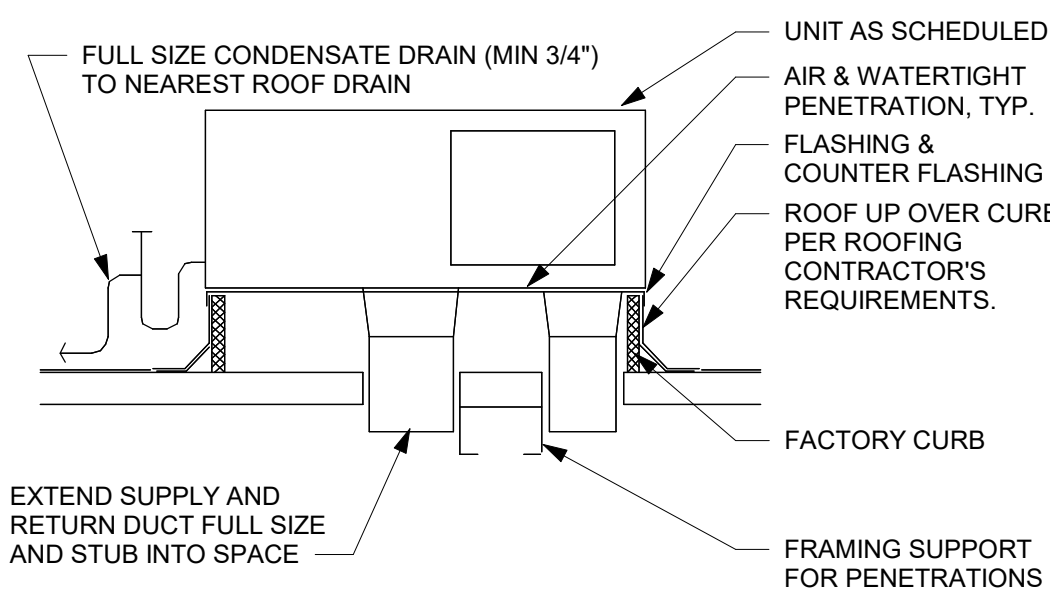
PLUMBING FIXTURE SCHEDULE SHELL			
DESIGN ID	COUNT	DESCRIPTION	COMMENTS
X0101	4	ROOF DRAIN	ZURN Z125 CAST IRON ROOF DRAIN
X0102	2	DOUBLE CHECK BACKFLOW PREVENTER ASSEMBLY	PROVIDE PER AHJ RECOMMENDATIONS IN ACCESSIBLE LOCATION
X0102	1	FLOOR DRAIN	ZURN FD2209, ADJUSTABLE FLOOR DRAIN, 3" HUB OUTLET, NICKLE BRONZE TOP
X0103	4	WALL HYDRANT	ZURN Z1321-CXL ECOLOTRROL WALL HYDRANT
X0104	4	GRADE CLEANOUT	ZURN Z1400-B21, DURA-COATED CAST IRON BODY, NICKEL BRONZE COVER



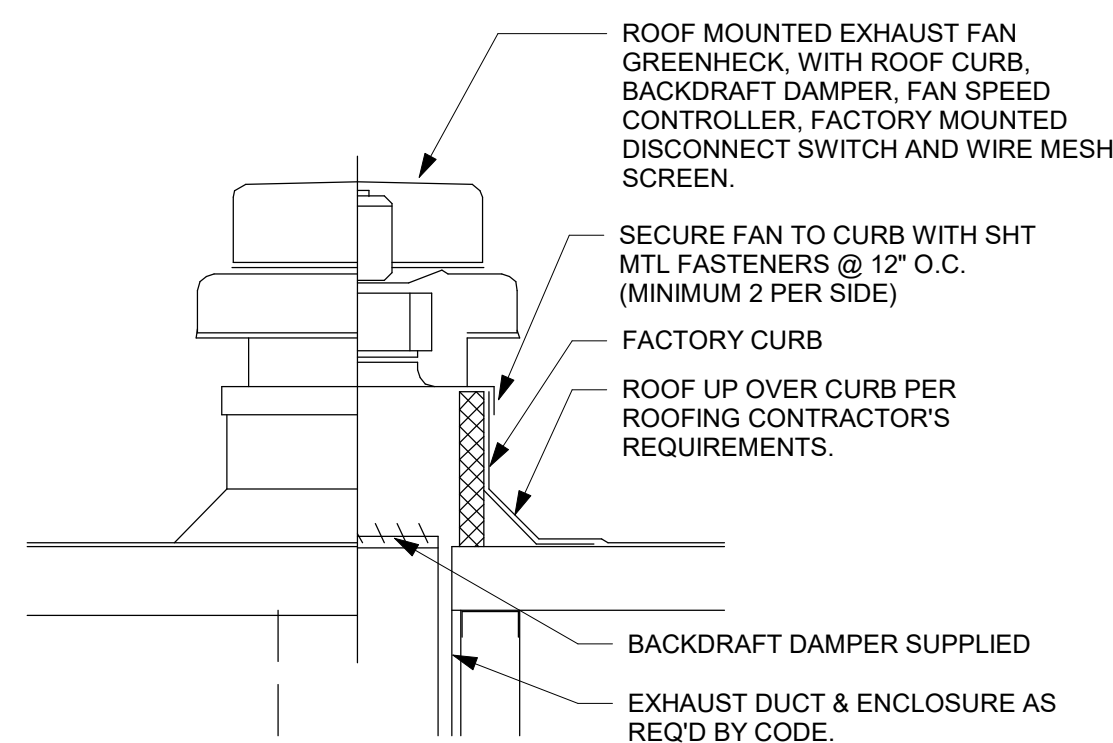
⑤ PIPE/ROOF PENETRATION DETAIL



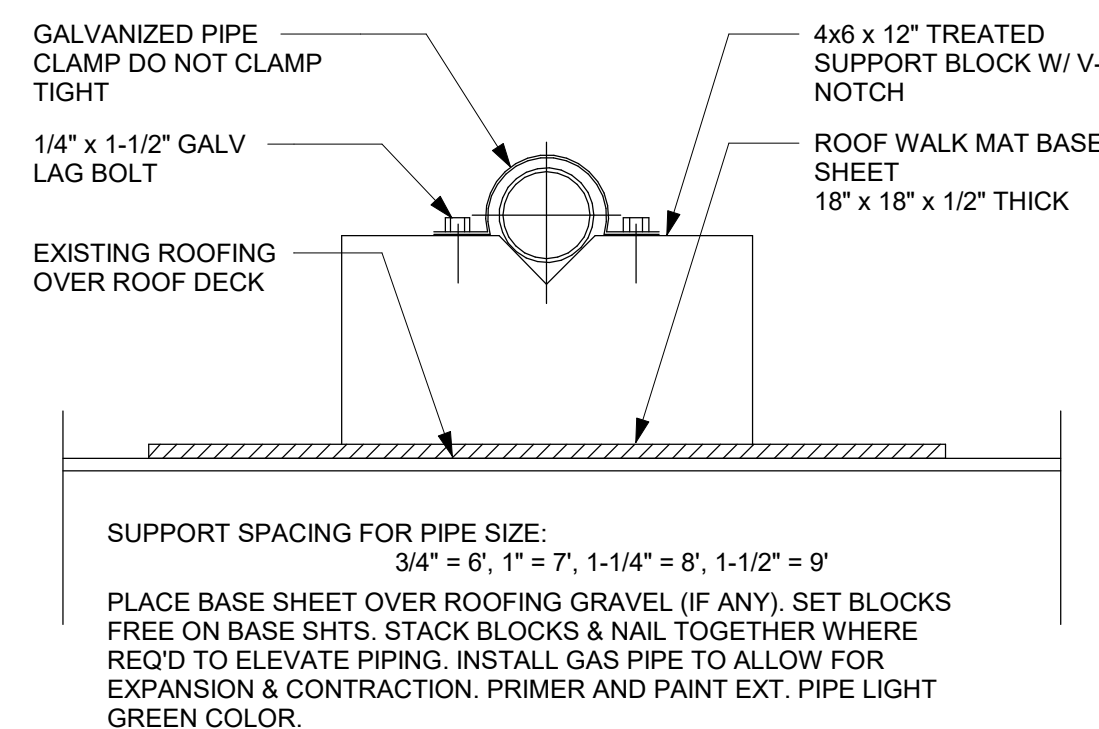
6 ROOF PENETRATION DETAIL



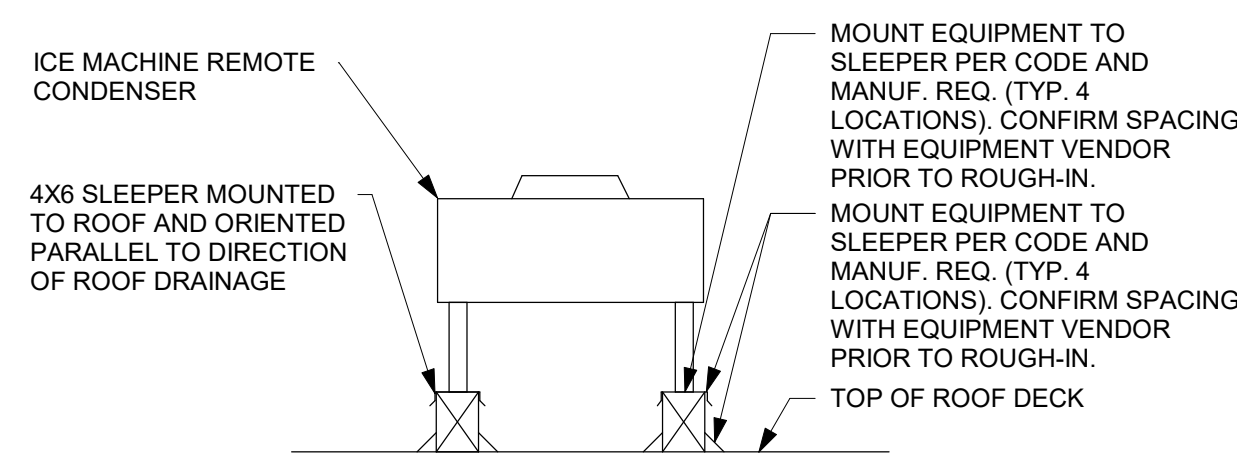
1 ROOFTOP AIR HANDLING UNIT



2 ROOF EXHAUST FAN



② PIPE SUPPORT DETAIL



4 EQUIPMENT SUPPORT DETAIL

REV.	DATE	DESCRIPTION
1	08/27/2021	BUILDING DEPARTMENT REVISIONS



MARIETTA HWY & I-575
5068 MARIETTA HIGHWAY
CANTON, GA 30114

MECHANICAL & PLUMBING SCHEDULES & DETAILS

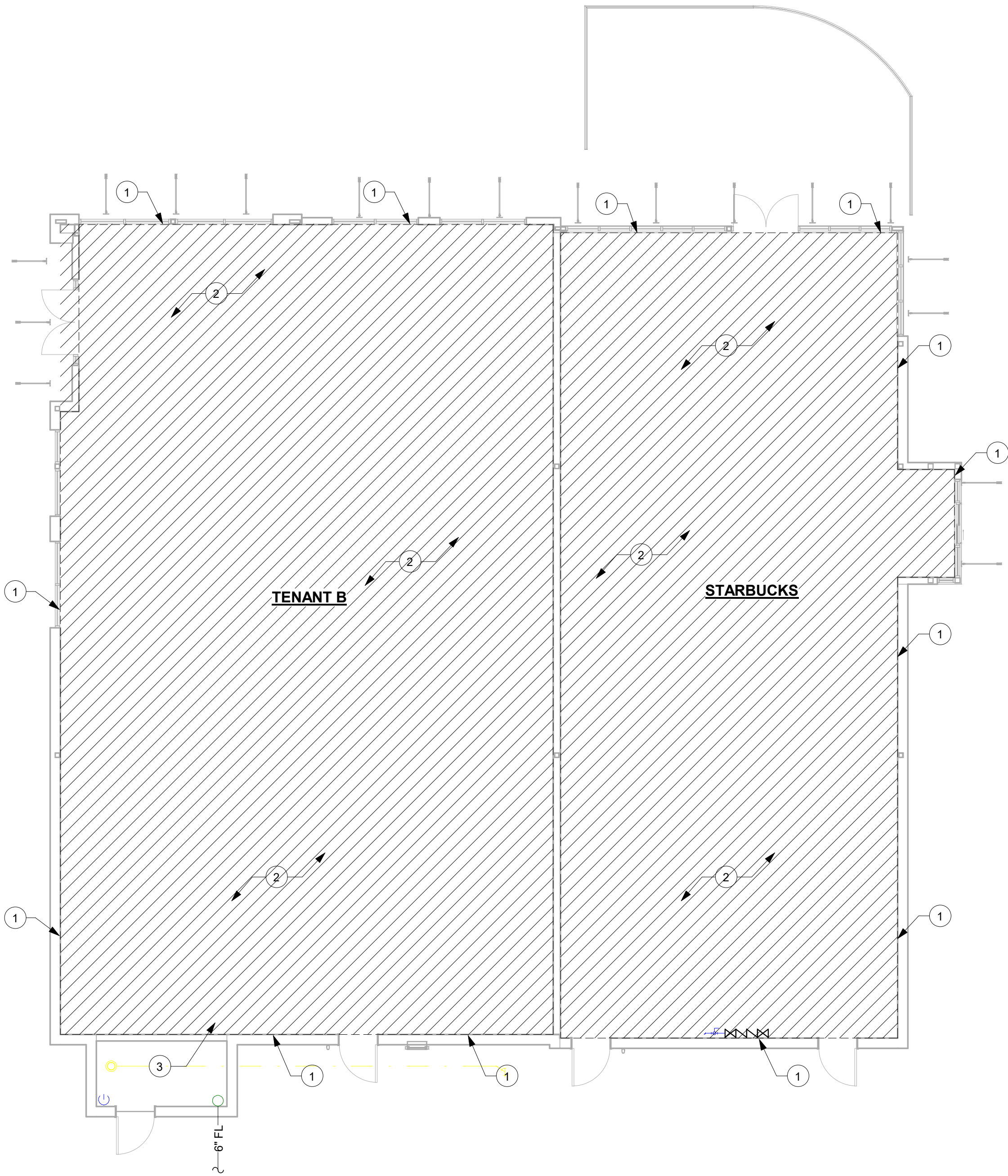
	DATE
ISSUED FOR CONSTRUCTION	
BID	

PROJECT MANAGER	DESIGNER
AK	RV

JOB NO.
2020379.07

M1002

D
C
B
A



1 FIRE PROTECTION PLAN
Scale: 1/8" = 1'-0"

PLUMBING SUPPLY PLAN NOTES

- A. THIS DRAWING IS FOR REFERENCE ONLY. A LICENSED FIRE PROTECTION CONTRACTOR SHALL DESIGN AND INSTALL A WET PIPE SPRINKLER SYSTEM IN COMPLIANCE WITH N.F.P.A. 13, THE STATE PLUMBING CODE, AND ALL OTHER APPLICABLE CODES AND ORDINANCES. FLUSH AND COMMISSION SYSTEM, AND OBTAIN ALL FINAL APPROVALS FROM THE STATE AND LOCAL AUTHORITIES.
- B. PROVIDE DESIGN BUILD SYSTEM TO MEET REQUIREMENTS SHOWN. PREPARE HYDRAULIC CALCULATIONS AND DESIGN DRAWINGS. OBTAIN ALL PERMITS, INSPECTIONS, AND APPROVALS.
- C. FIRE PROTECTION CONTRACTOR SHALL SIZE PIPING AND HYDRAULICALLY CALCULATE PER N.F.P.A. 13.
- D. ALL MATERIALS SHALL BE UL AND/OR FM APPROVED AND SHALL BE INSTALLED PER N.F.P.A. 13.
- E. ALL SPRINKLER HEADS SHALL BE CONCEALED PENDANT TYPE.

SHEET NOTES

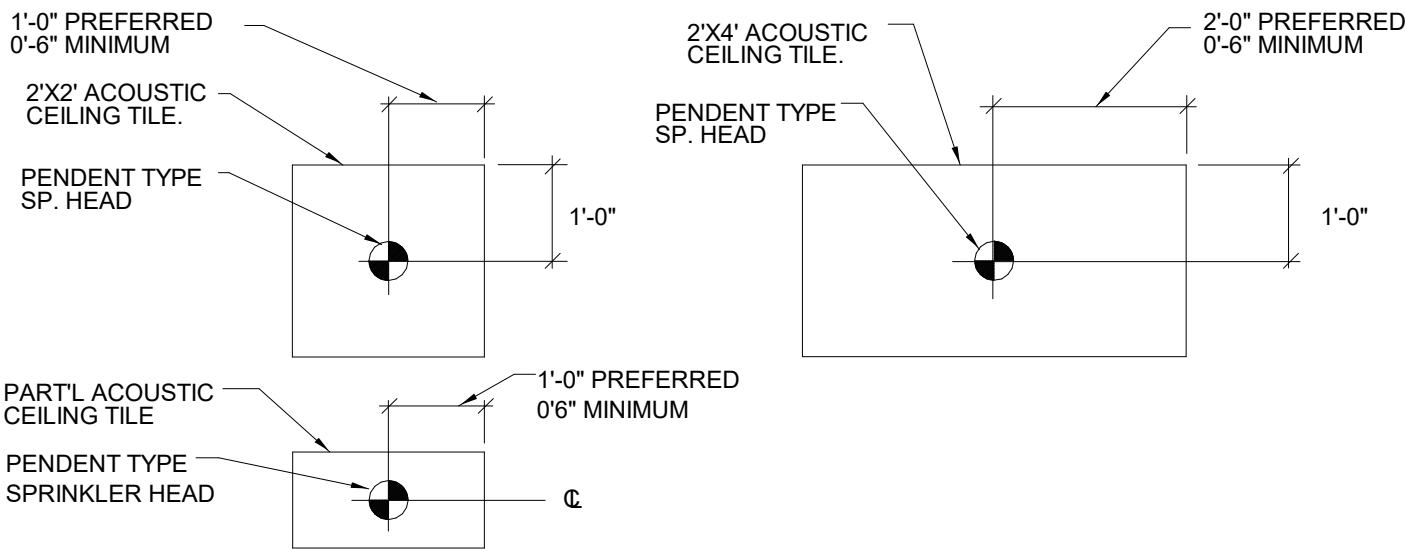
1. PROVIDE AND INSTALL AUTOMATIC SPRINKLER LINES AND SPRINKLER HEADS WITHIN DASHED OUTLINED AREA, UNLESS NOTED OTHERWISE. AUTOMATIC SPRINKLER SYSTEM SHALL BE HYDRAULICALLY CALCULATED AND SIZED FOR LIGHT HAZARD OCCUPANCY PER N.F.P.A. 13, UNLESS NOTED OTHERWISE. COORDINATE WITH ARCHITECTURAL CEILING PLANS.
2. SPRINKLE DIAGONAL HATCHED AREA ORDINARY HAZARD GROUP I.
3. CONNECT TO EXISTING FIRE MAIN IN BUILDING, VERIFY EXACT SIZE, LOCATION, AND FLOW PRIOR TO START OF ANY WORK.

NOTES

- 1.) SPACE HAS AN EXISTING SPRINKLER SYSTEM. SPRINKLER CONTR SHALL REARRANGE EXISTING HEADS AND IS RESPONSIBLE FOR THE ADDITION OR DELETING OF SPRINKLER HEADS AND PIPING.
- 2.) SPRINKLER SYSTEM TO BE INSTALLED BY A LICENSED SPRINKLER CONTRACTOR.
- 3.) CONTRACTOR IS TO COORDINATE PIPING W/WORK OF OTHER TRADES. (HVAC, PLUMBING, FIRE PROTECTION, AND LIGHTING)
- 4.) INSTALL SPRINKLER HEADS TO COORDINATE WITH ARCHITECTURAL REFLECTED CEILING PLAN.
- 5.) FIRE PROTECTION CONTRACTOR SHALL SUBMIT SPRINKLER SHOP DRAWINGS TO ARCHITECT FOR REVIEW AND APPROVAL **PRIOR** TO SUBMITTING TO AUTHORITY HAVING JURISDICTION.
- 6.) DRY PENDENT SPRINKLERS TO BE INSTALLED WITH SPRINKLER BOOT PER TYCO MODEL DSB-1.
- 7.) BFP SIZING AND RISER SIZING BY SPRINKLER CONTRACTOR DURING SHOP DRAWING PROCESS.
- 8.) INCOMING LOCATION OF SPRINKLER RISER BY LANDLORD. FIELD VERIFY EXACT LOCATION.

LEGEND

- SPRINKLER HEAD (PENDENT) ———— ⊕ ————
- DRY PENDANT HEAD ———— ● ————
- SPRINKLER HEAD (UPRIGHT) ———— ⊙ ————



3 SPRINKLER HEAD LOCATION DETAIL
Scale: 12" = 1'-0"

REV.	DATE	DESCRIPTION
1	08/27/2021	BUILDING DEPARTMENT REVISIONS



MARIETTA HWY & I-575
5068 MARIETTA HIGHWAY
CANTON, GA 30114

FIRE PROTECTION PLAN

ISSUED FOR CONSTRUCTION	DATE
BID	
PROJECT MANAGER	DESIGNER
AK	RV

JOB NO.
2020379.07

M1003