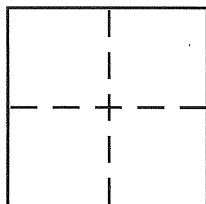


**CORNER RECORD**Document Number CR 2042City of BERKELEYCounty of ALAMEDA, CaliforniaBrief Legal Description PARCELS A AND C, PARCEL MAP 2813 (109M84)**CORNER TYPE**Government Corner ☐ Control ☐Meander ☐ Property ☒Rancho ☐ Other ☐Date of Survey 29 OCT. '03**COORDINATES (Optional)**

N. \_\_\_\_\_

E. \_\_\_\_\_

Zone \_\_\_\_\_ NAD27 ☐ NAD83 ☐

NAD83 Epoch \_\_\_\_\_

Elev. \_\_\_\_\_

Vert. Datum: NGVD29 ☐ NAVD88 ☐Meas. Units: Metric ☐ Imperial ☐
**Corner -** Left as found ☒ Found and tagged ☐ Established ☒ Reestablished ☐ Rebuilt ☐

Identification and type of corner found: Evidence used to identify or procedure used to establish or reestablish the corner:

FOUND CITY PIN MONUMENT PER PARCEL MAP  
2813 (109M15)

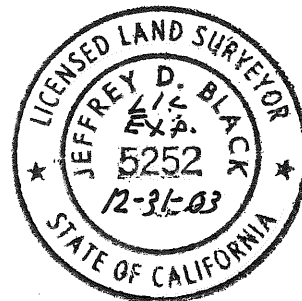
A description of the physical condition of the monument as found and as set or reset: \_\_\_\_\_

FOUND 1" IRON PIPE - TAG ILLEGIBLE  
SET 5/8" REBAR & PLASTIC CAP LS 5252
**SURVEYOR'S STATEMENT**

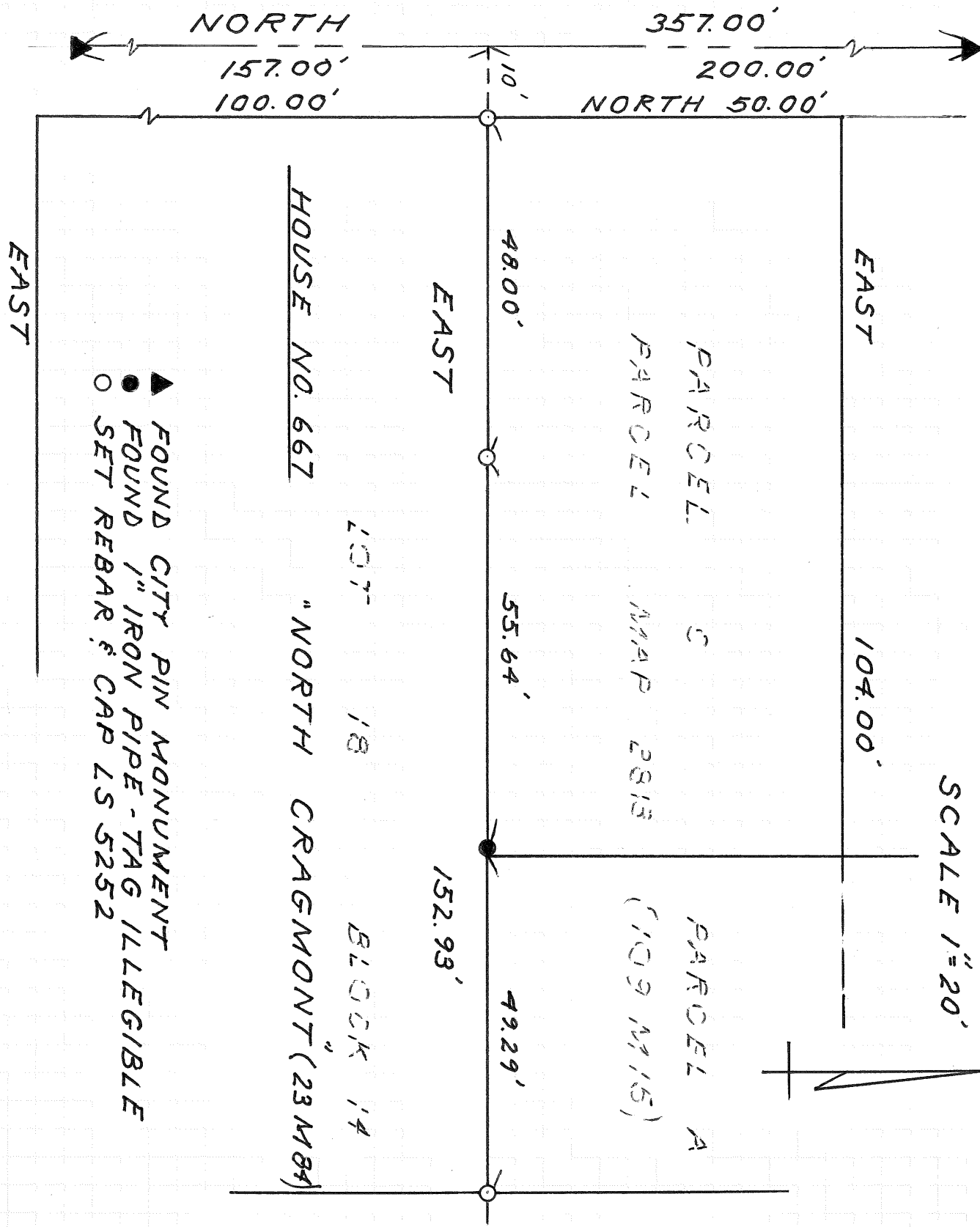
This Corner Record was prepared by me or under my direction in conformance with

the Land Surveyor's Act on 31 OCTOBER 2003Signed Jeffrey D. Black P.L.S. or R.C.E. No. 5252**COUNTY SURVEYOR'S STATEMENT**This Corner Record was received 11-12-03and examined and filed 3-22-04Signed Russell R. Penland, Jr. P.L.S. or R.C.E. No. 5726Title COUNTY SURVEYOR

County Surveyor's Comment \_\_\_\_\_



# EUCLID AVENUE (70' WIDE)



SCALE 1"=20'