

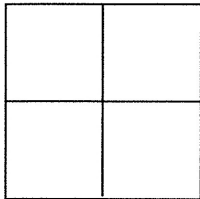
CORNER RECORD

Agency Index BK 111 PG 74
Document Number CR 11627

City of BERKELEY County of ALAMEDA, California
Brief Legal Description CITY OF BERKELEY MONUMENT B2353, LOCATED AT OPP. 851 THE ALAMEDA.

CORNER TYPE

COORDINATES (Optional)



Government Corner ☐ Control ☒
Meander ☐ Property ☐
Rancho ☐ Other ☐

Date of Survey 5/8/18

N. _____ E. _____

Elevation _____

Units _____ Metric ☐ U.S. Survey Foot ☐

Horizontal Datum _____

Zone _____ Epoch Date _____

Vertical Datum _____

☐ Complies with Public Resources Code §§8801-8819

☐ Complies with Public Resources Code §§8801-8902

PLS Act Ref.: ☐ 8765(d) ☒ 8771 ☐ 8773 ☐ Other:

Corner/
Monument: ☐ Left as found ☐ Established ☐ Rebuilt ☐ Pre-Construction
☐ Found and tagged ☒ Reestablished ☐ Referenced ☒ Post-Construction

Narrative of corner identified and monument as found, set, reset, replaced, or removed.

☒ See sheet #2 for description(s)

SEE CR 9932 FOR PRE-CONSTRUCTION

SURVEYOR'S STATEMENT

This Corner Record was prepared by me or under my direction in conformance with

the Professional Land Surveyor's Act on JUNE 28, 2018

Signed Patrick M. Rei P.L.S. or P.C.E. No. 8178



COUNTY SURVEYOR'S STATEMENT

This Corner Record was received 2 JULY 2018

and examined and filed 22 AUGUST 2018

Signed Michael Rubner P.L.S. or P.C.E. No. 6843

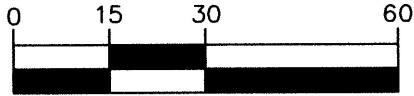
Title COUNTY SURVEYOR

County Surveyor's Comment



KSR JOB# 19653-18-03

GRAPHIC SCALE



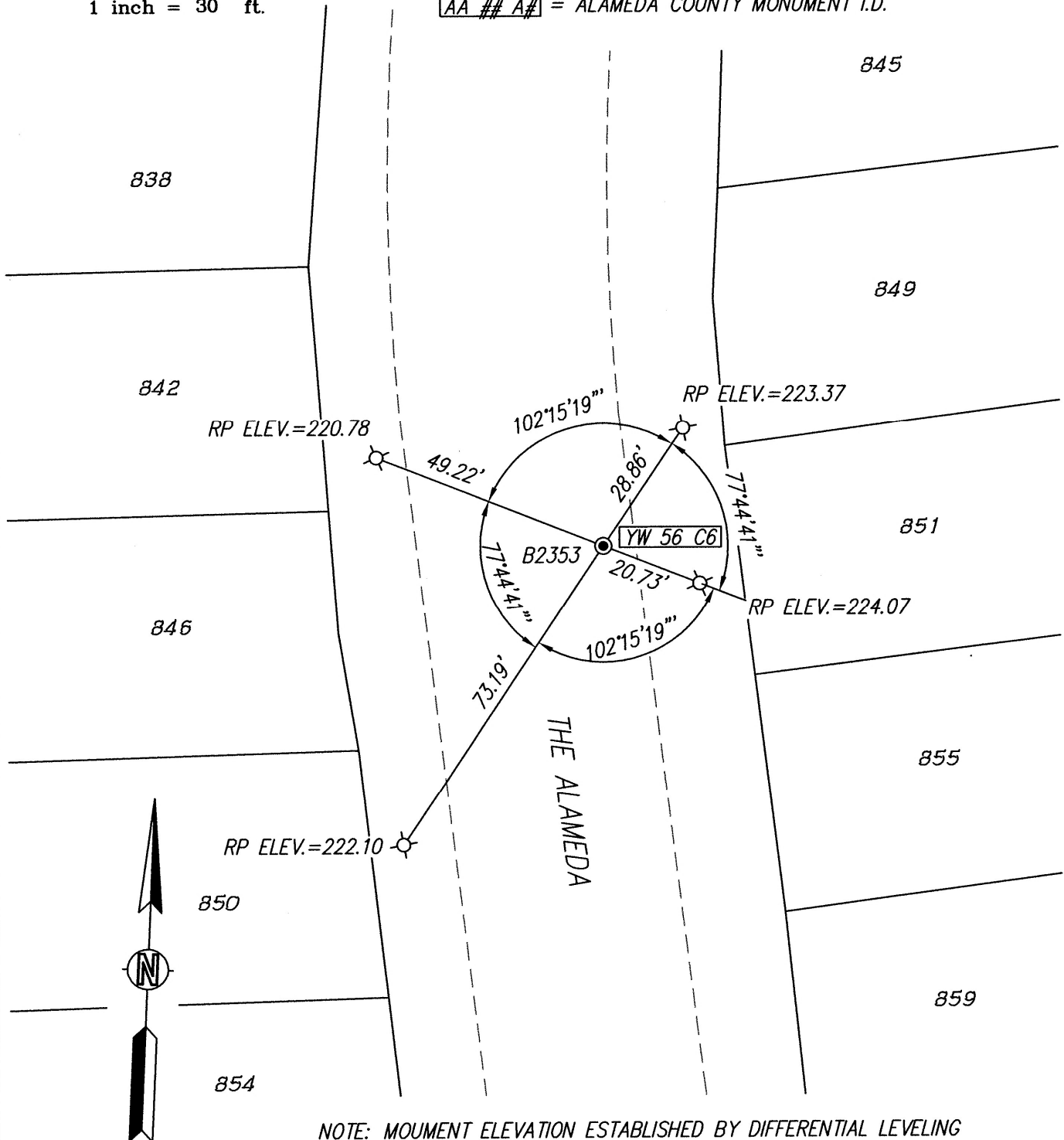
(IN FEET)
1 inch = 30 ft.

LEGEND

⊙ = RE-SET CITY MONUMENT B2353;
2" BRASS DISC IN STANDARD WELL
ELEVATION = 222.21 COB DATUM

⊗ = FOUND MAG NAIL REFERENCE POINT (RP) PER CR 9932

AA ## A# = ALAMEDA COUNTY MONUMENT I.D.



NOTE: MONUMENT ELEVATION ESTABLISHED BY DIFFERENTIAL LEVELING
UTILIZING A SOKKIA SDL30 DIGITAL LEVEL.