

FINAL TRACT MAP NO. 37-46

SHEET 4 OF 12

WHITE MOUNTAIN ESTATES PHASE 1 & 2

A SUBDIVISION OF THE SOUTH 1/2 OF THE SOUTHEAST 1/4 AND THE SOUTHEAST 1/4 OF THE SOUTHWEST 1/4 OF SECTION 22, TOWNSHIP 5 SOUTH, RANGE 33 EAST, MOUNT DIABLO MERIDIAN, IN THE UNINCORPORATED TERRITORY OF THE COUNTY OF MONO, STATE OF CALIFORNIA.

See Sheet 3 of 12 for
LEGEND & BASIS OF BEARINGS

See Sheet 6 of 12 and Sheet 7 of 12 for
Centerline & Easement Detail Data

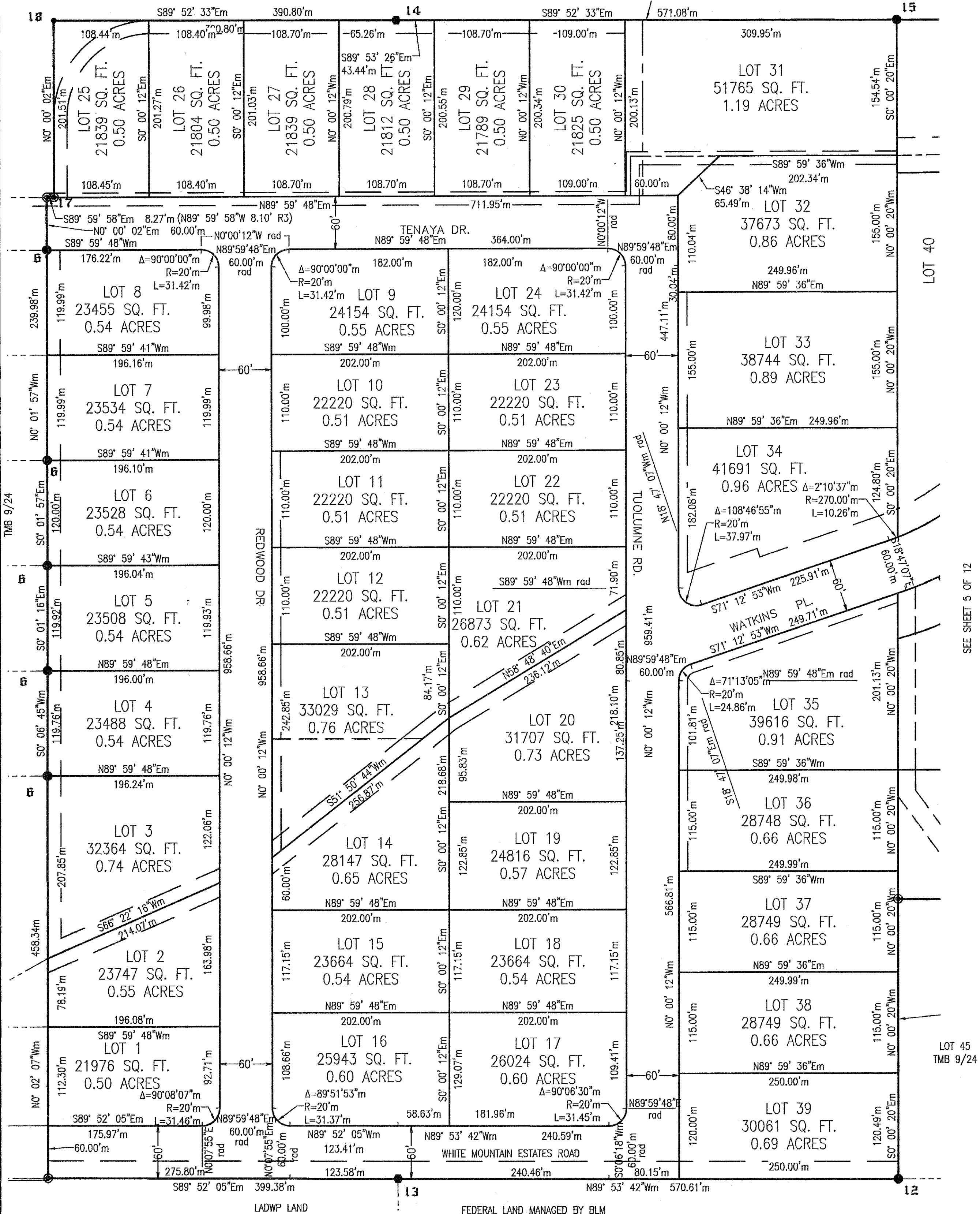
See Sheet 8 of 12 for
Corner Descriptions &
History of Surveys

MONUMENT NOTE: Set a 2"Ø aluminum cap inscribed LS5149 at all lot corners, lot angle points and lot PCs and PTs. For clarity, no monument symbol has been used at said lot locations.

GRAPHIC SCALE



FEDERAL LAND MANAGED BY BLM



SEE SHEET 5 OF 12