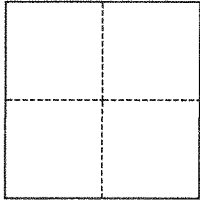


CORNER RECORD

Agency Index BK 145 PG 20Document Number CR 15650City of SAN LORENZO County of ALAMEDA, CaliforniaBrief Legal Description MONUMENT AT VIA DESCANAO & VIA LUCERO**CORNER TYPE**

- ☐ Government Corner ☒ Control
☐ Meander ☐ Property
☐ Rancho ☐ Other

Date of Survey September 17, 2021**COORDINATES (Optional)**

N. _____ E. _____

Elevation _____

Units ☐ Metric ☒ U.S. Survey Foot

Horizontal Datum _____

Zone _____ Epoch Date _____

Vertical Datum _____

☐ Complies with Public Resources Code §§8801-8819☐ Complies with Public Resources Code §§8890-8902

PLS Act Ref.:

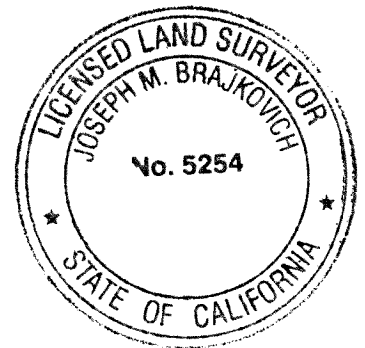
☐ 8765(d)☒ 8771☐ 8773☐ Other:Corner/
Monument:☒ Left as found☐ Established☐ Rebuilt☒ Pre-Construction☐ Found and tagged☐ Reestablished☒ Referenced☐ Post-Construction

Narrative of corner identified and monument as found, set, reset, replaced, or removed:

☒ See sheet #2 for description(s):**SURVEYOR'S STATEMENT**

This Corner Record was prepared by me or under my direction in conformance with

the Professional Land Surveyors' Act on

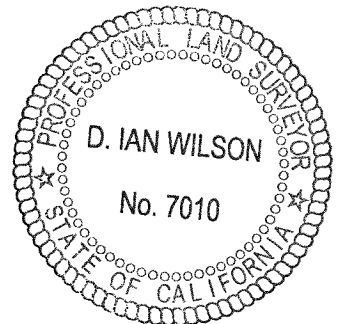
Signed Joseph M. Brajkovich P.L.S. or R.C.E. No. 5254**COUNTY SURVEYOR'S STATEMENT**

This Corner Record was received


and examined and filed

JAN 12 2022Signed D. Ian Wilson P.L.S. or R.C.E. No. 7010Title ALAMEDA COUNTY SURVEYOR

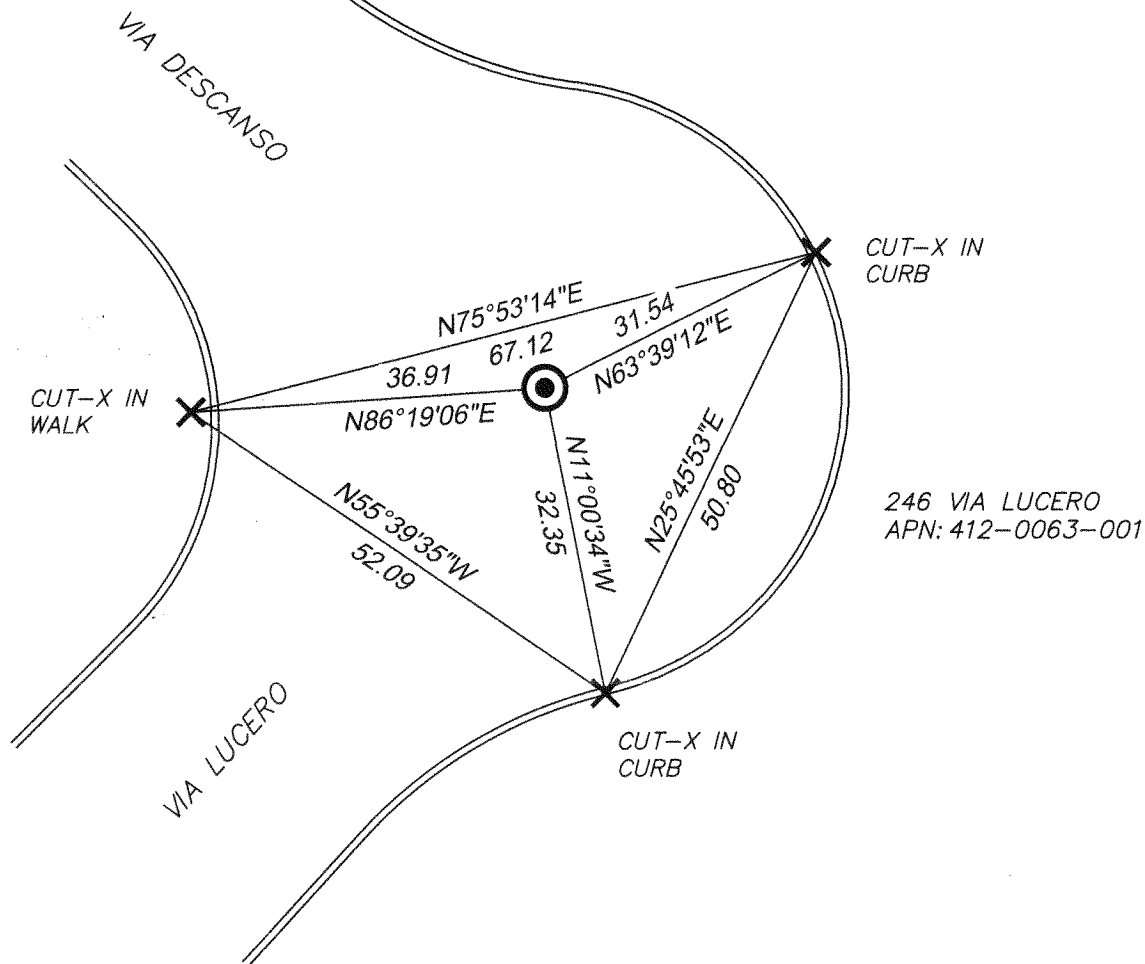
County Surveyor's Comment



LEGEND

- ##### STREET ADDRESS
 APN ASSESSOR'S PARCEL NUMBER
 FOUND SURVEY MONUMENT
 (1/4" NAIL IN CONC IN WELL)
 X CUT CROSS SET IN CURB
 OR WALK AS DISPLAYED

SCALE: 1" = 20'



21-157 SHEET C-7