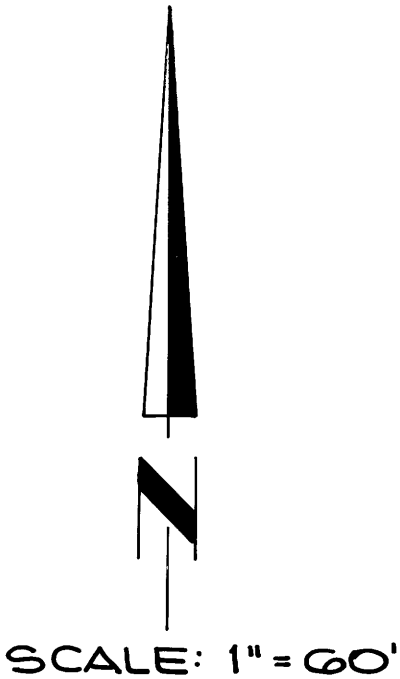


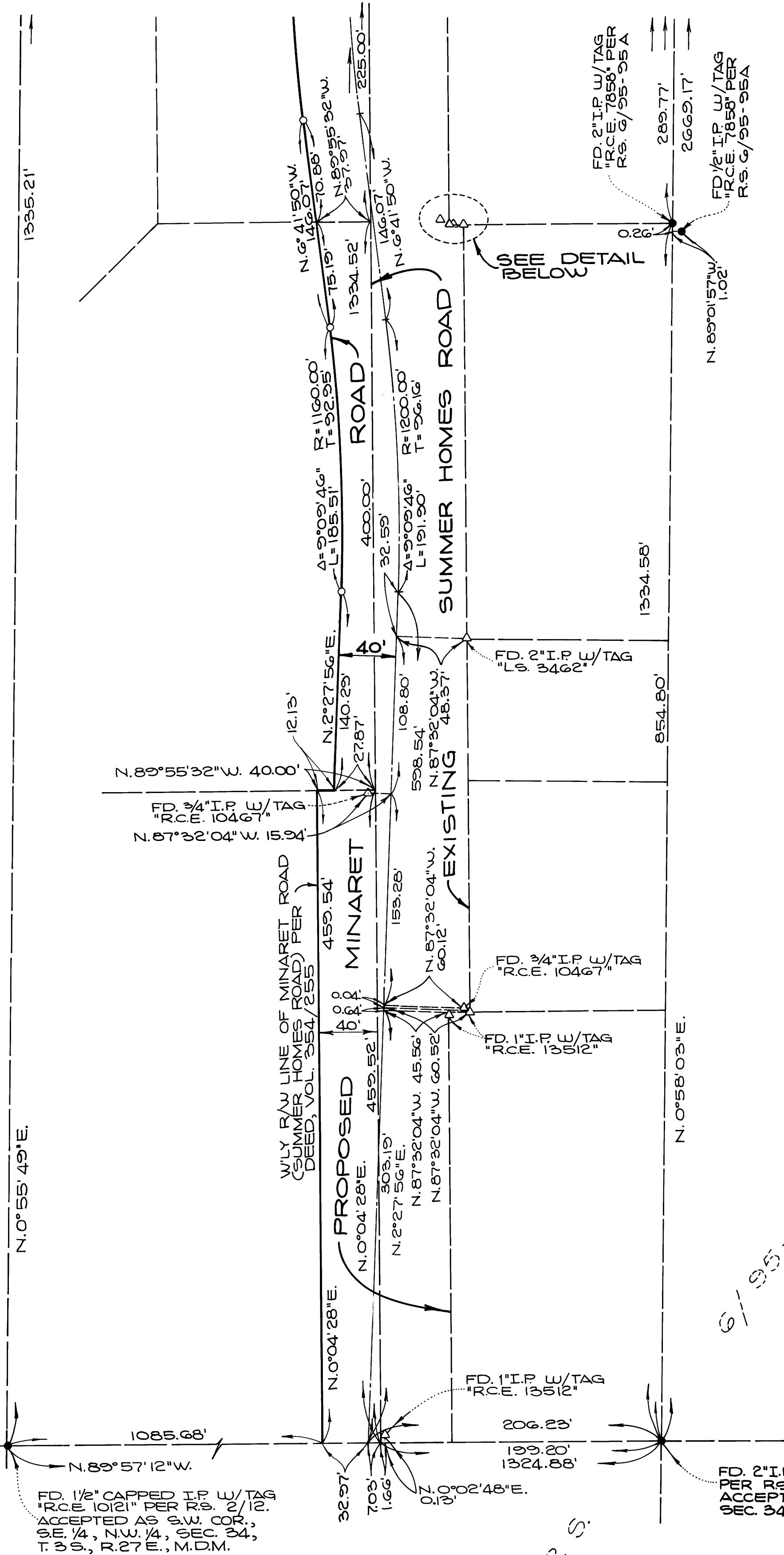
RECORD OF SURVEY 36-31

IN UNINCORPORATED TERRITORY OF MONO COUNTY, CALIFORNIA.
BEING A PORTION OF THE SOUTH-EAST QUARTER OF THE NORTH-
WEST QUARTER OF SECTION 34, TOWNSHIP 3 SOUTH, RANGE 27
EAST, MOUNT DIABLO MERIDIAN.
AUGUST 1982
GERALD F. OLDENBURG, L.S. 3246
WILLIAMSON AND SCHMID, CIVIL ENGINEERS

RECORDER'S CERTIFICATE
FILED THIS 28th DAY OF
October, 1982, AT 9:40 AM.
IN BOOK 1, PAGES 85
AND 85-A, AT THE REQUEST
OF THE COUNTY SURVEYOR.
#3121
Patricia Minard
COUNTY RECORDER



SEE SHEET 2



BASIS OF BEARINGS:

BEARINGS SHOWN HEREON ARE BASED
ON THE EAST LINE OF THE N.W. 1/4 OF
SECTION 34, TOWNSHIP 3 SOUTH, RANGE
27 EAST, MOUNT DIABLO MERIDIAN, BEING
N. 0° 58' 03" E. PER R.S. G/95 AND 95A,
RECORDS OF MONO COUNTY, CALIFORNIA.

MONUMENT NOTES:

- INDICATES FOUND MONUMENT AS NOTED.
- INDICATES SET 2" I.P. W/TAG "L.S. 3246"
- △ INDICATES MONUMENTS FOUND AS NOTED -
NO ATTEMPT HAS BEEN MADE TO VERIFY
LOCATION RELATIVE TO PROPERTY DESCRIPTIONS,
RECORD MAPS OR OTHER DOCUMENTATION.
SHOWN FOR REFERENCE ONLY.

SURVEYOR'S CERTIFICATE:

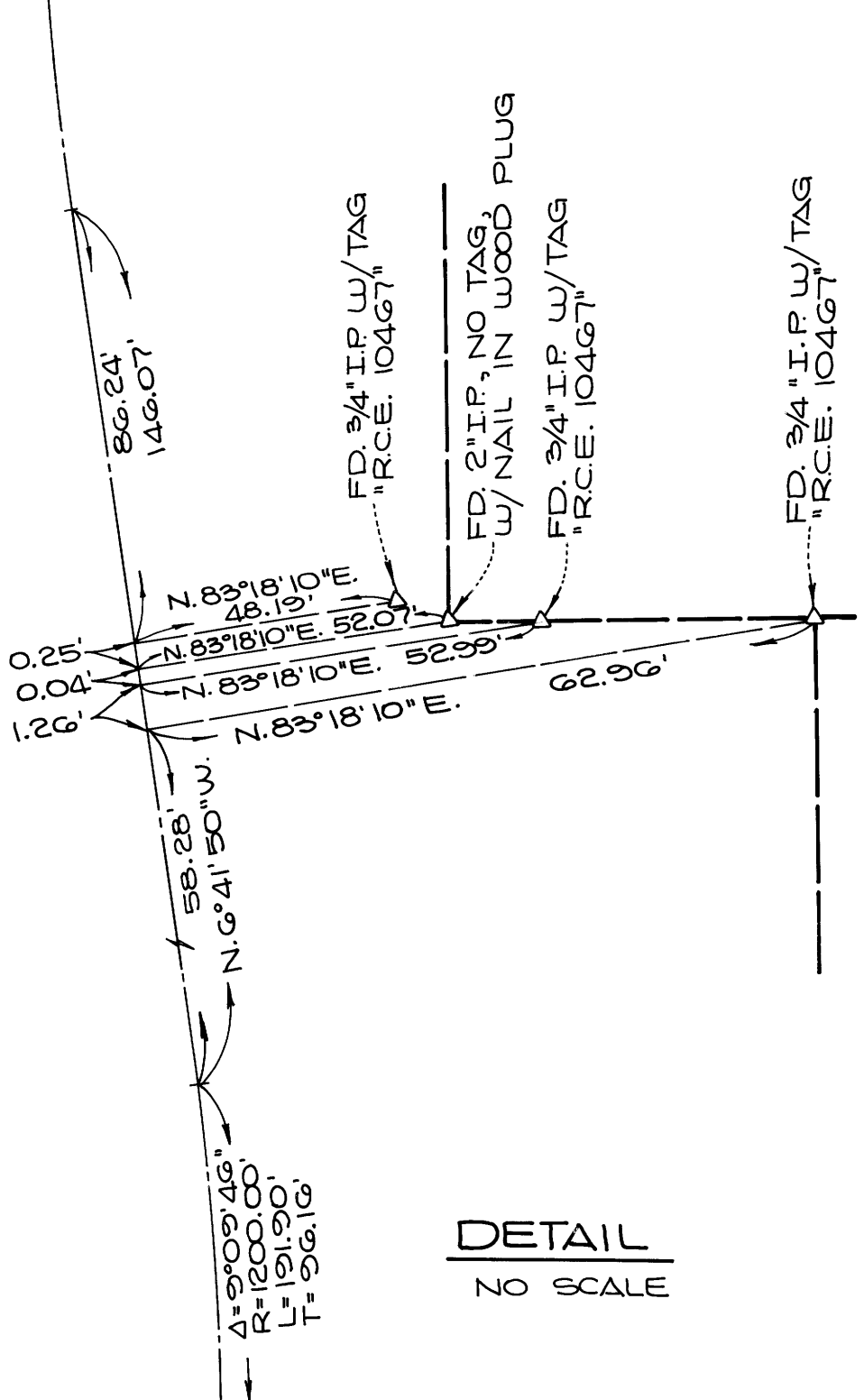
THIS MAP CORRECTLY REPRESENTS A SURVEY
MADE UNDER MY DIRECTION IN CONFORMANCE
WITH THE REQUIREMENTS OF THE LAND SURVEY-
OR'S ACT IN AUGUST 1982 AT THE REQUEST OF
THE COUNTY OF MONO.

Gerald F. Oldenburg
GERALD F. OLDENBURG, L.S. 3246

COUNTY SURVEYOR'S CERTIFICATE:

I HAVE EXAMINED THIS MAP FOR CONFORMANCE
WITH THE REQUIREMENTS OF THE LAND SURVEY-
OR'S ACT THIS 22nd DAY OF OCT., 1982.

Richard Burrows
DEPUTY COUNTY SURVEYOR
JL # 65462



6-95-95A

2/S Vol. 7 Page 85

NOTE: SEE CERTIFICATE OF CORRECTION
RECORDED IN VOLUME 398 PG. 545 O.R.