

BOUNDARY LINE ADJUSTMENT  
BASIS OF BEARINGS  
PER 46-M-1

# RECORD OF SURVEY

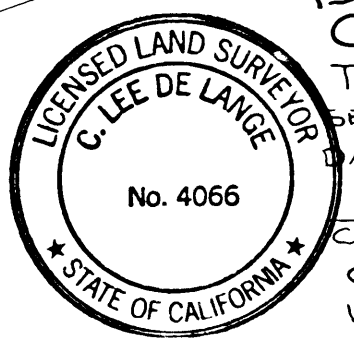
BEING A PORTION OF LOT 3, BLOCK 16 AND LOT 3  
BLOCK 23, CITY OF SUTTER CREEK, CALIFORNIA  
SCALE: 1"=40'

SURVEYED BY:  
TOMA & ANDERSON  
LAND SURVEYORS

### SURVEYOR'S STATEMENT

THIS MAP CORRECTLY REPRESENTS A SURVEY  
MADE BY ME OR UNDER MY DIRECTION IN  
CONFORMANCE WITH THE REQUIREMENTS OF THE  
LAND SURVEYORS ACT AT THE REQUEST OF MIKE  
KOEPE IN SEPT. 1995.

*Fred E. Wilke*  
FRED E. WILKE, P.L.S. 5032  
LIC. EXP. 12-31-97



### COUNTY SURVEYOR'S STATEMENT

THIS MAP HAS BEEN EXAMINED IN ACCORDANCE WITH  
SECTION 8766 OF THE LAND SURVEYORS ACT THIS 16  
DAY OF October, 1995.  
*C. Lee DeLange*  
C. LEE DELANGE, L.S. 4066  
COUNTY SURVEYOR  
LIC. EXP. 6-30-96

### RECORDER'S STATEMENT

FILED THIS 17<sup>th</sup> DAY OF October, 1995 AT 3:00 P.  
IN BOOK 49 OF MAPS & PLATS AT PAGE 38, AT THE  
REQUEST OF FRED E. WILKE, 1995-007809 \$7.00 paid  
*Sheldon D. Johnson* *Marlene Anese*  
SHELDON D. JOHNSON DEPUTY  
COUNTY RECORDER

### NOTES & LEGEND:

- SET 3/4" REBAR TAGGED L.S. 5032
- FOUND 3/4" REBAR WITH PLASTIC CAP  
TAGGED L.S. 3725 OR AS NOTED.

BOUNDARY LINE ADJUSTMENT WAS APPROVED  
BY THE SUTTER CREEK CITY COUNCIL ON  
AUGUST 7, 1995 BY RESOLUTION NO. PC95-96-02A

DEED REF. TO SUBJ. PARCEL 95000964

- > RECORD DATA PER 1-M-56
- > RECORD DATA PER 30-M-11