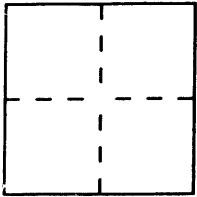


CORNER RECORDDocument Number 790City of OaklandCounty of Alameda, CaliforniaBrief Legal Description Set Property Corners.**CORNER TYPE**

Government Corner ☐ Control ☐
 Meander ☐ Property ☒
 Rancho ☐ Other ☐
 Date of Survey 6/11/96

**COORDINATES
(Optional)**

N. _____
 E. _____
 Zone _____ Datum _____
 Elev. _____

Corner — Left as found ☐ Found and tagged ☐ Established ☒ Reestablished ☐ Rebuilt ☐

Identification and type of corner found: Evidence used to identify or procedure used to establish or reestablish the corner:
Found monuments on Claremont Avenue used as basis of bearing for survey
as shown on Alameda County Records map book 7 page 80.

A description of the physical condition of the monument as found and as set or reset: _____
set two 5/8" rebar and one nail and tag at front property corners, set two wood
hubs with tags on property lines (see sketch on back)

SURVEYOR'S STATEMENT

This Corner Record was prepared by me or under my direction in conformance with
 the Land Surveyors' Act on 9-23 1996

Signed J. E. Schuricht L.S. (or R.C.E.) Number 26630

**COUNTY SURVEYOR'S STATEMENT**

This Corner Record was received 7-15 1996 and examined

and filed 2-14 1997
 Signed Russell R. Penland, Jr. Title DEPUTY COUNTY SURVEYOR



County Surveyor's Comment _____

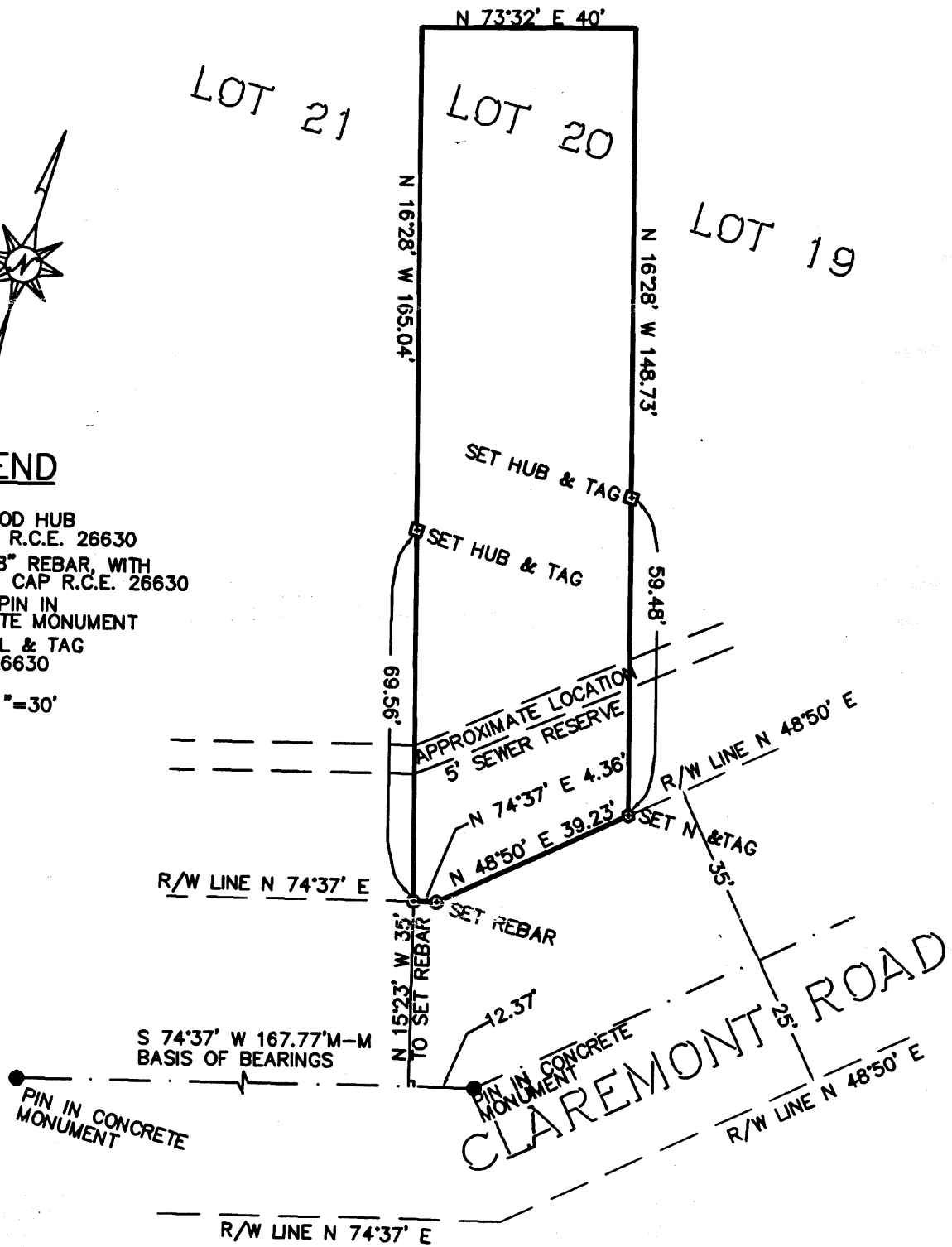
BLOCK G



LEGEND

- SET WOOD HUB
TAGGED R.C.E. 26630
- ⊙ SET 5/8" REBAR, WITH
PLASTIC CAP R.C.E. 26630
- FOUND PIN IN
CONCRETE MONUMENT
- ⊙ SET NAIL & TAG
R.C.E. 26630

SCALE 1"=30'



7 M 80