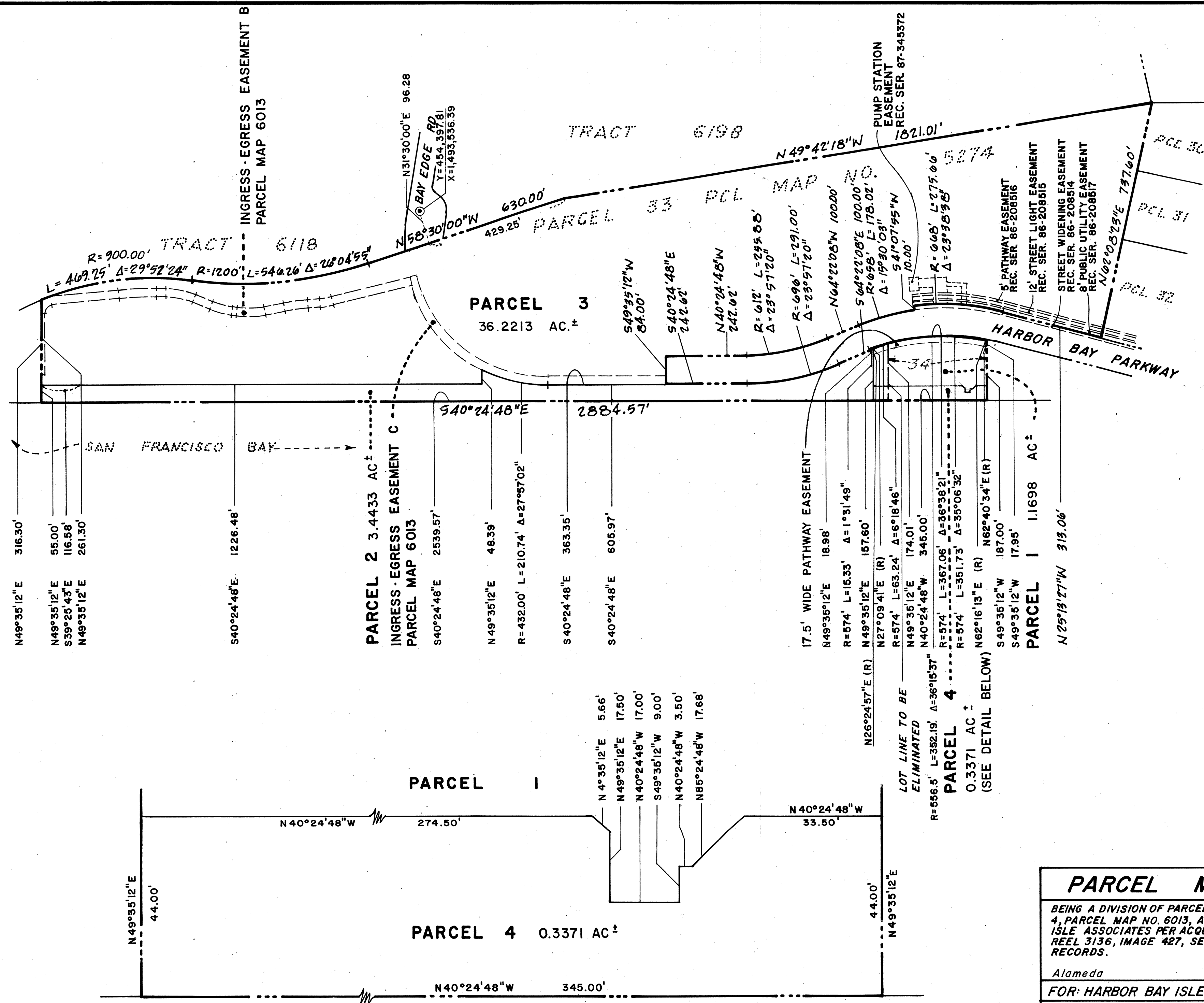


09 APR 17 09 25 47



**DETAIL (SEE ABOVE)**  
**NOT TO SCALE**

PARCEL MAP NO. 6024

BEING A DIVISION OF PARCEL 34, PARCEL MAP NO. 5274, AND PARCEL 4, PARCEL MAP NO. 6013, A PORTION OF THE LANDS OF HARBOR BAY ISLE ASSOCIATES PER ACQUISITION DEED RECORDED MAY 19, 1972, REEL 3136, IMAGE 427, SERIES NO. 72-67048 ALAMEDA COUNTY RECORDS.

Alameda California

**FOR: HARBOR BAY ISLE ASSOCIATES**

BY: JTA INC ENGINEERS PLANNERS Palo Alto, California

OCTOBER 1990	Scale: 1"=200'	Sheet 2 of 2
--------------	----------------	--------------

PH 6024

MAP BK 196

PG - 13

BK196P/13