

VICINITY MAP

NO SCALE

BASIS OF BEARINGS

THE BEARING N38°18'E OF THE SOUTHWESTERLY LINE OF HAMILTON AVENUE AS SHOWN ON PARCEL MAP, RECORDED IN BOOK 444 OF MAPS AT PAGE 41, SANTA CLARA COUNTY RECORDS, WAS USED AS THE BASIS OF ALL BEARINGS SHOWN UPON THIS MAP.

RECORDER'S STATEMENT

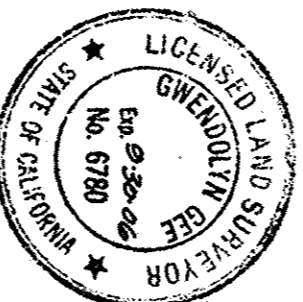
FILED THIS 24th DAY OF June, 2005, AT 3:03 P.M.
IN BOOK 788 OF MAPS AT PAGE 19, AT THE
REQUEST OF GREGORY F. BRAZE
FILE NO. 18440713 FEE \$ 8.00

BRENDA DAVIS, COUNTY RECORDER
By *Brenda Davis*
DEPUTY

COUNTY SURVEYOR'S STATEMENT

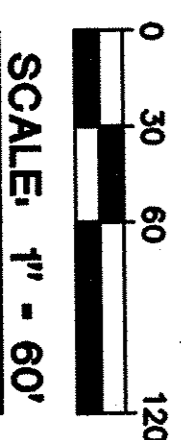
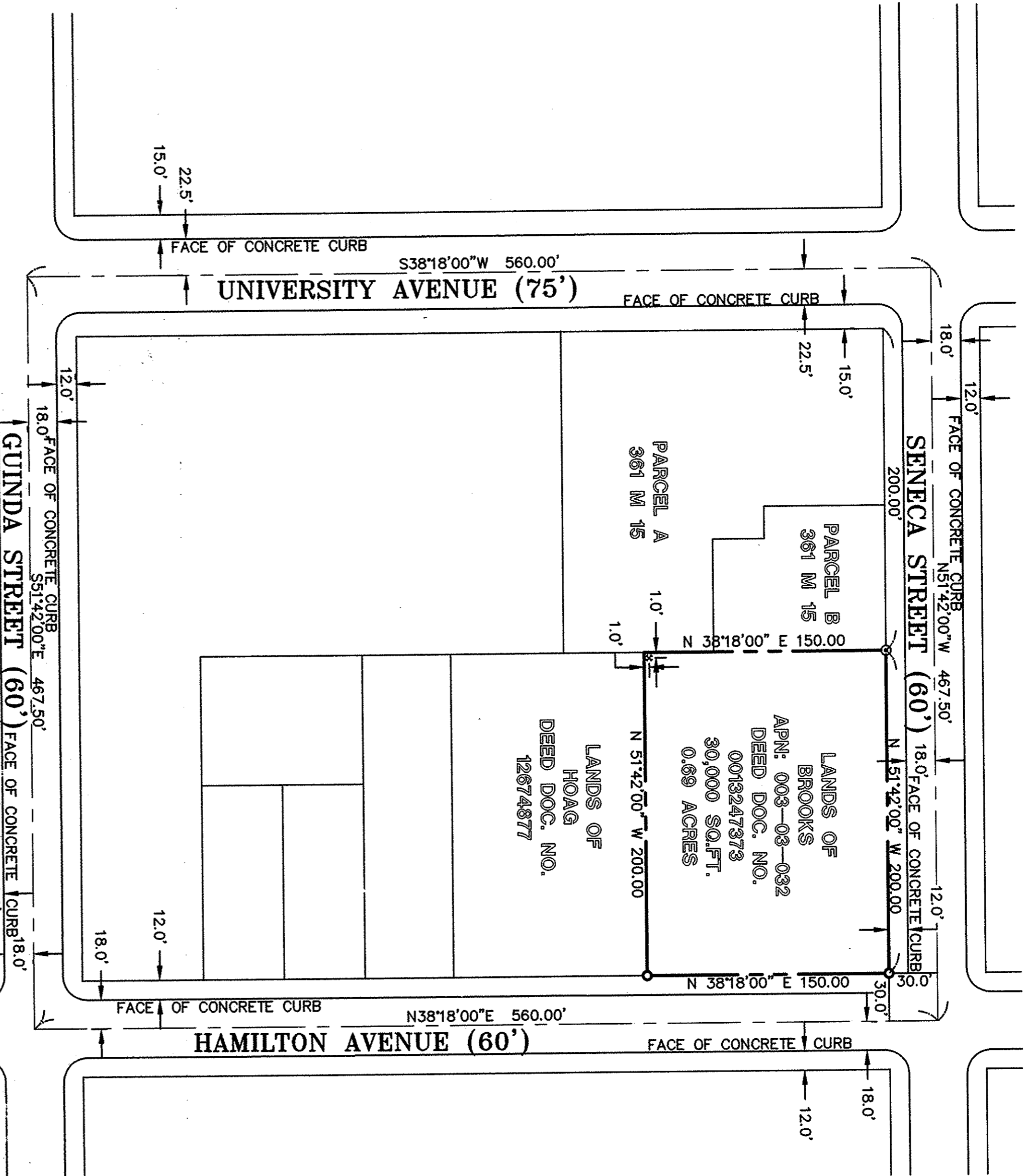
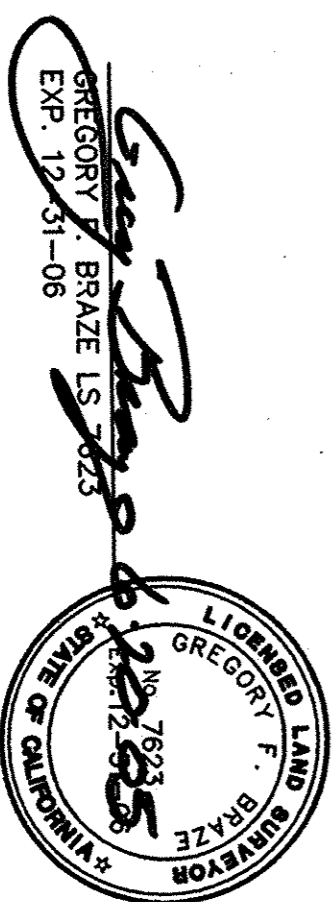
THIS MAP HAS BEEN EXAMINED IN ACCORDANCE WITH SECTION 8766 OF THE PROFESSIONAL LAND SURVEYORS' ACT THIS 23rd DAY OF June, 2005.

Gwendolyn Gee
GWENDOLYN GEE, COUNTY SURVEYOR
LS 6780
EXPIRES 9/30/2006



SURVEYOR'S STATEMENT

THIS MAP CORRECTLY REPRESENTS A SURVEY MADE BY ME OR UNDER MY DIRECTION IN CONFORMANCE WITH THE REQUIREMENTS OF THE PROFESSIONAL LAND SURVEYORS' ACT AT THE REQUEST OF WAUWA IN DECEMBER 2004.



SCALE: 1" = 60'

RECORD OF SURVEY

CITY OF PALO ALTO SANTA CLARA COUNTY CALIFORNIA
SCALE: 1"=60'
MAY 2005



OF THE LANDS OF BROOKS AS DESCRIBED IN
DEED DOCUMENT NO. 0013247373
BEING A PORTION OF LOT 3 BLOCK 53,
D MAPS 69
SANTA CLARA COUNTY RECORDS