

# TRACT 2553

PLEASANTON TOWNSHIP, ALAMEDA COUNTY, CALIFORNIA  
IN THE UNINCORPORATED TERRITORY IN THE COUNTY OF ALAMEDA

KENNETH Q. VOLK & ASSOCIATES—CONSULTING ENGINEERS

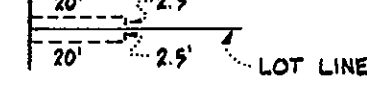
SCALE: 1"=40'

MAY 1965

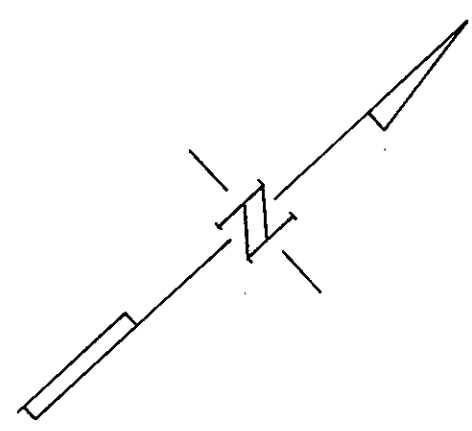
TRACT 2551  
Book 49, Pages 52-55 CR.

## LEGEND

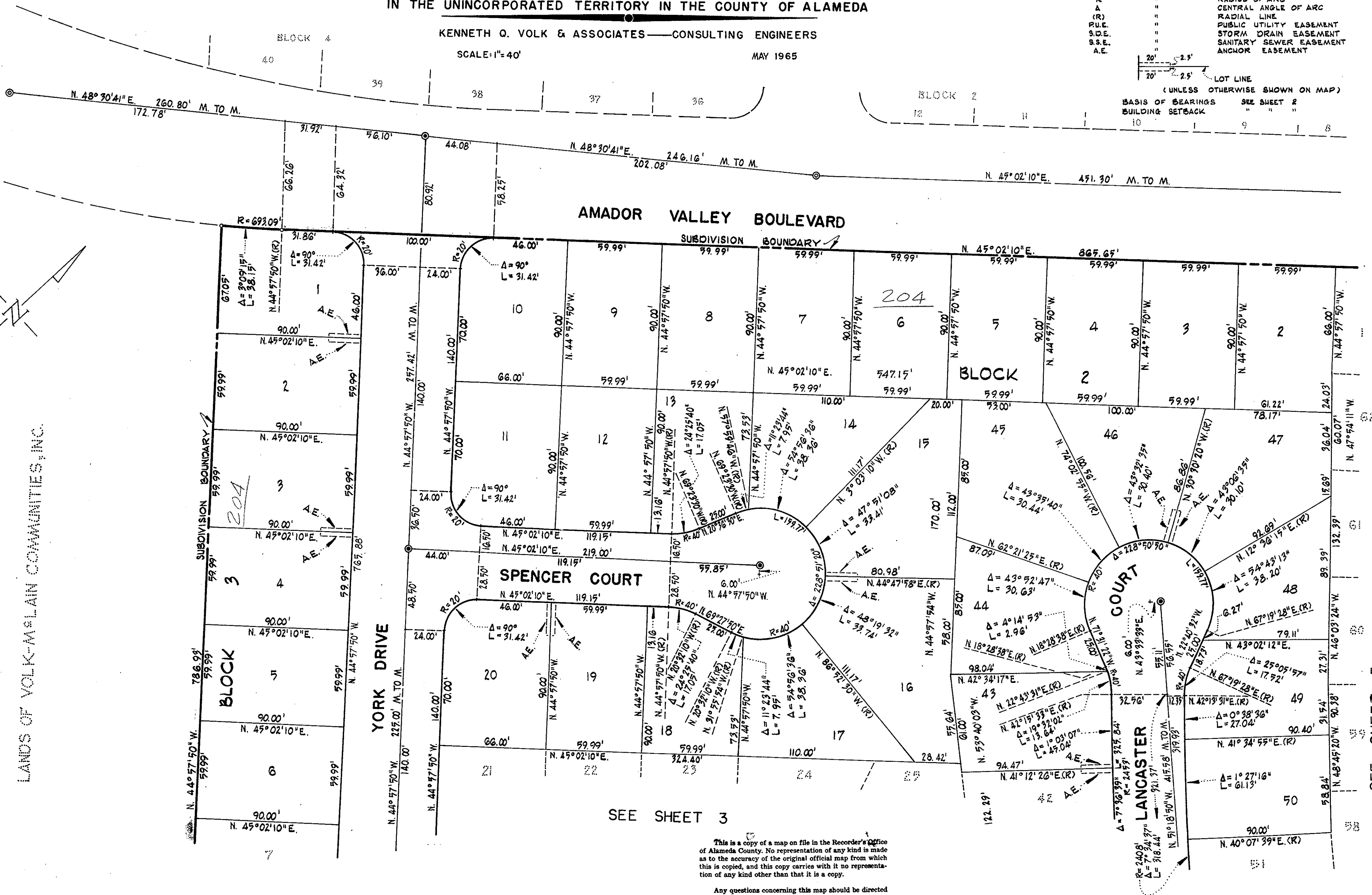
- INDICATES
- EXTERIOR BOUNDARY ANGLE POINT
- EXISTING MONUMENT
- MONUMENT TO BE INSTALLED
- LENGTH OF ARC
- RADIUS OF ARC
- CENTRAL ANGLE OF ARC
- RADIAL LINE
- PUBLIC UTILITY EASEMENT
- STORM DRAIN EASEMENT
- SANITARY SEWER EASEMENT
- ANCHOR EASEMENT



(UNLESS OTHERWISE SHOWN ON MAP)  
BASIS OF BEARINGS SEE SHEET 2  
BUILDING SETBACK



LANDS OF VOLK-MELAIN COMMUNITIES, INC.



SEE SHEET 3

This is a copy of a map on file in the Recorder's Office of Alameda County. No representation of any kind is made as to the accuracy of the original official map from which this is copied, and this copy carries with it no representation of any kind other than that it is a copy.

Any questions concerning this map should be directed to the Recorder's Office of Alameda County.  
DIETRICH POST COMPANY

TRACT  
2553

SEE SHEET 5