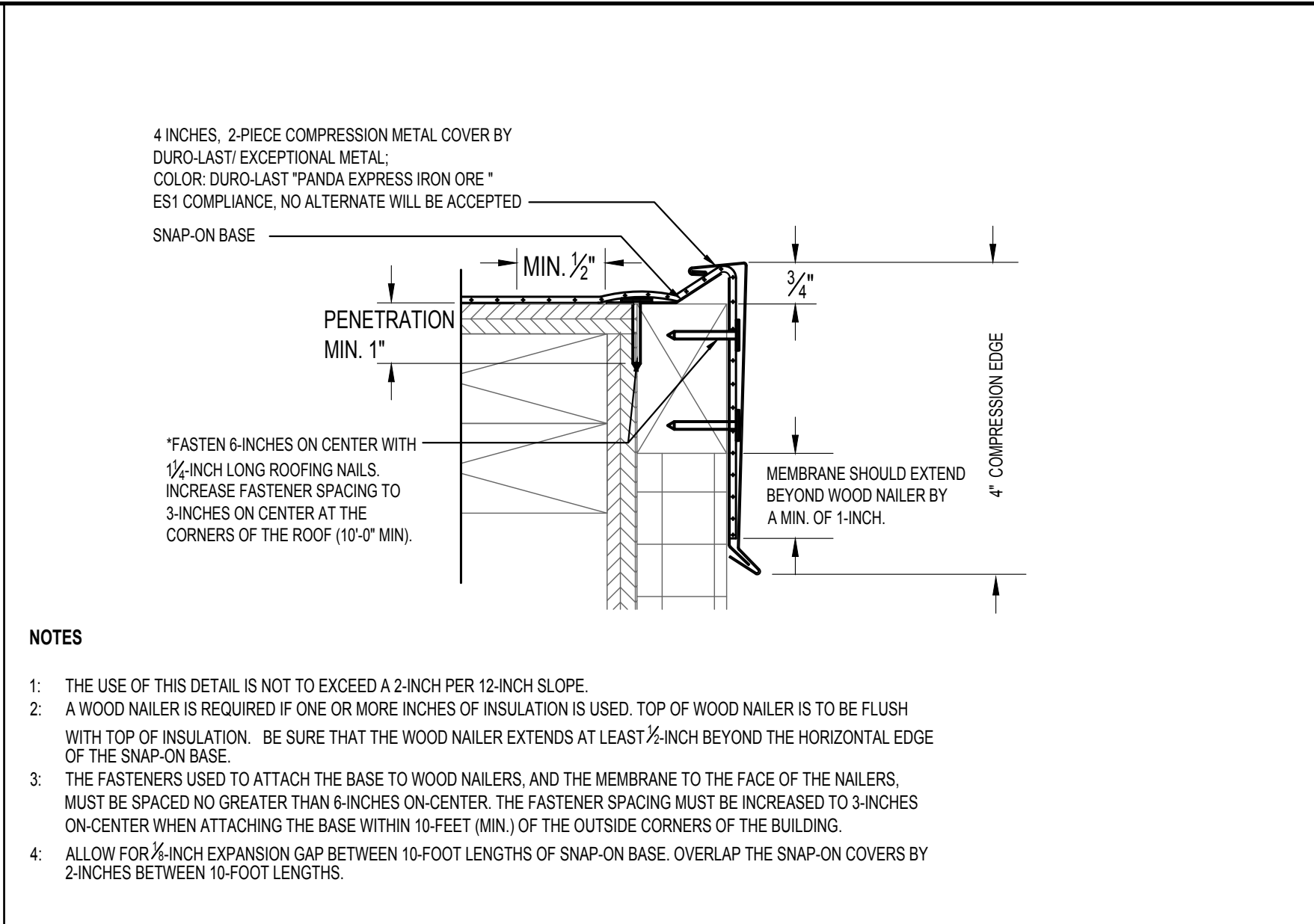


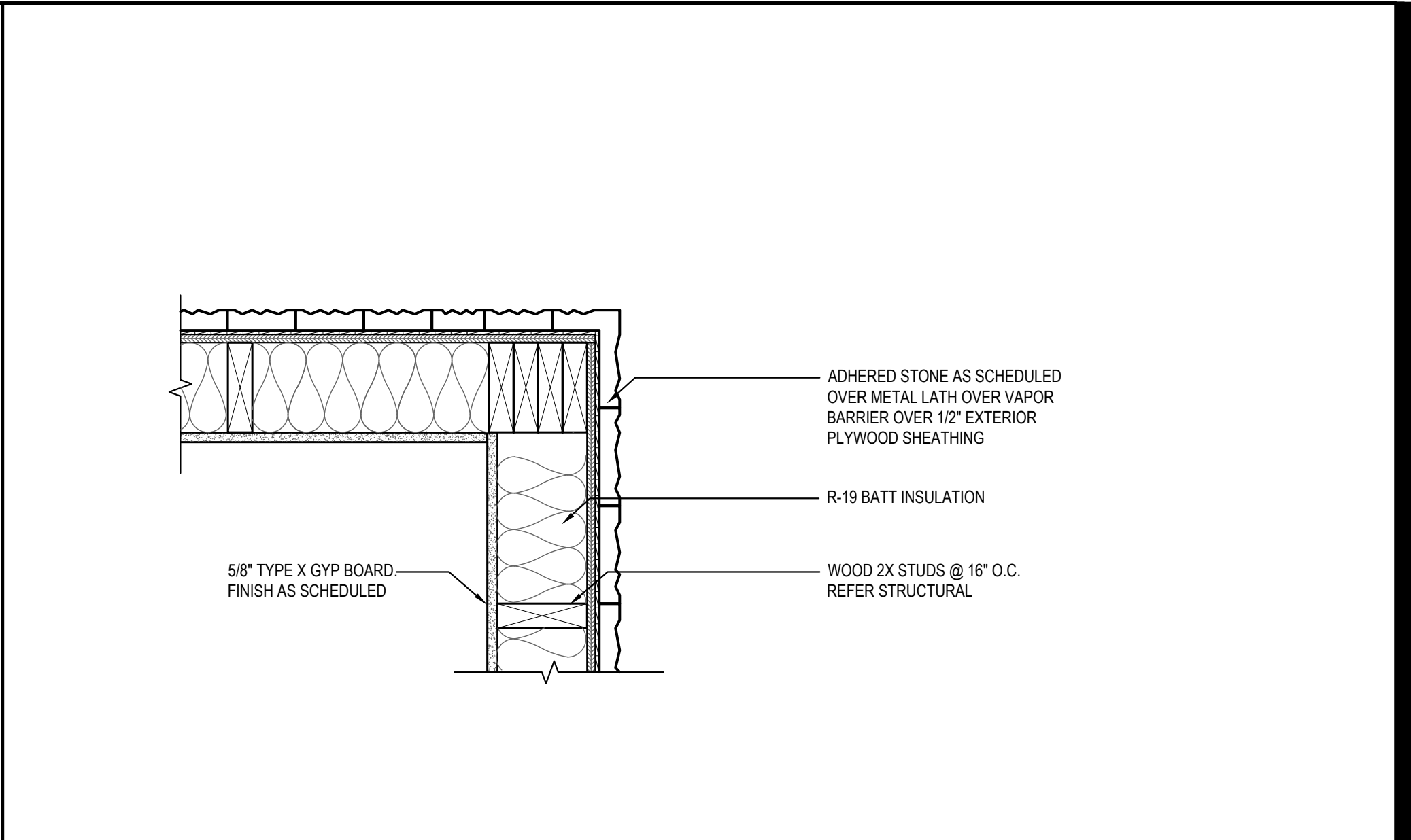
PLAN SECTION/DETAIL 09

Scale= 1 1/2" = 1'-0" A-401



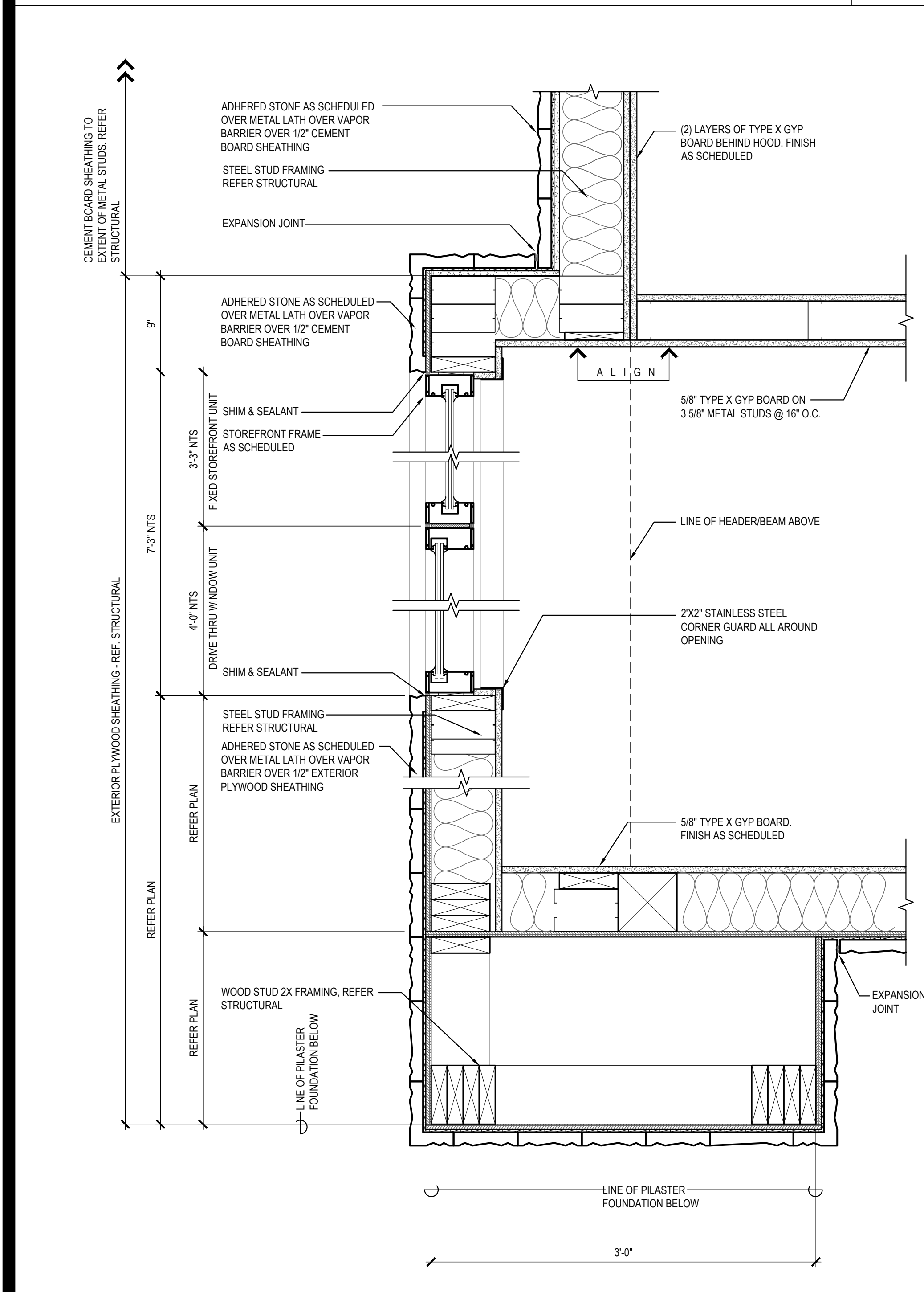
3-INCH HIGH, 2-PIECE COMPRESSION EDGE 06

NTS A-401



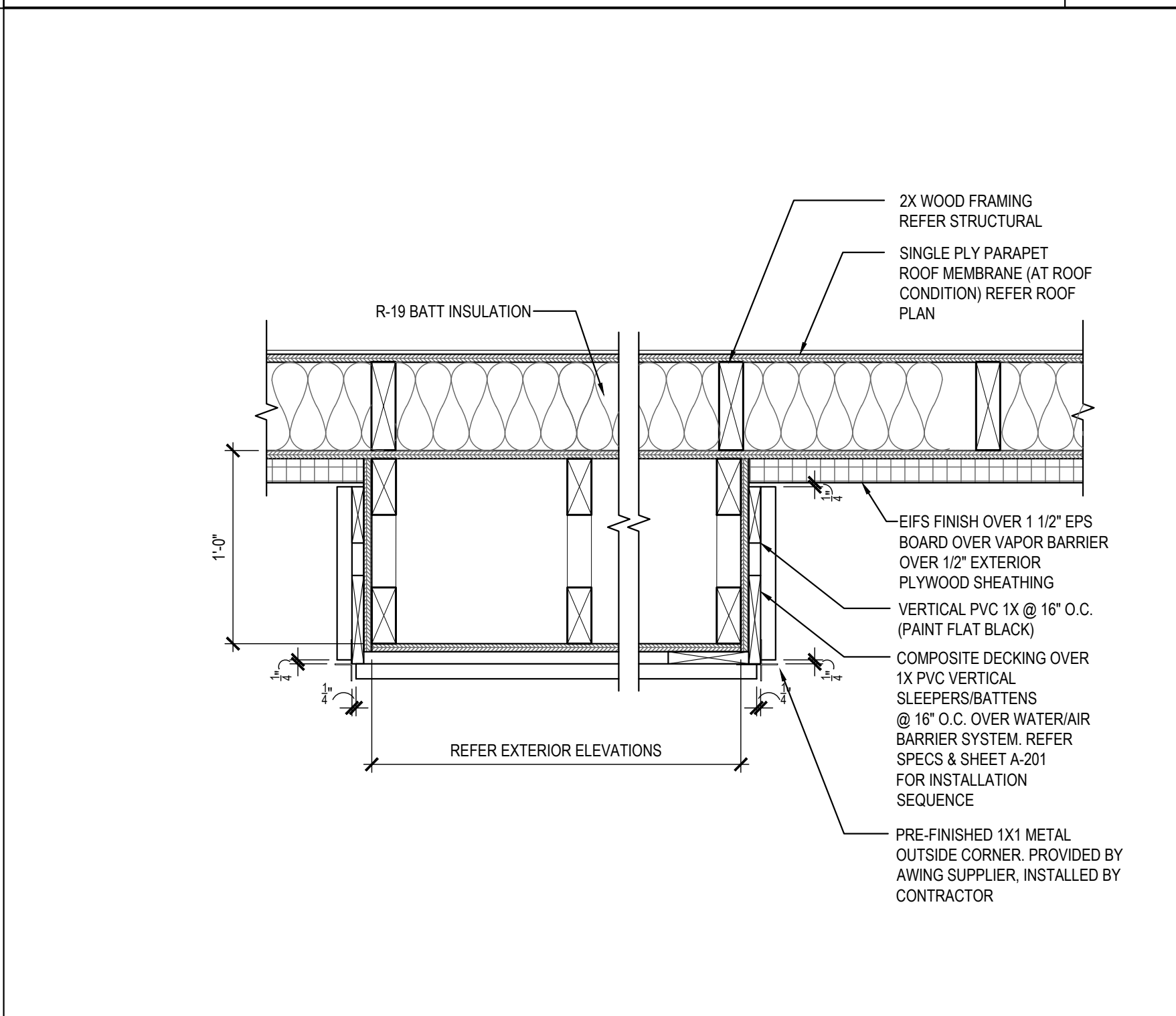
PLAN SECTION/DETAIL 03

Scale= 1 1/2" = 1'-0" A-401



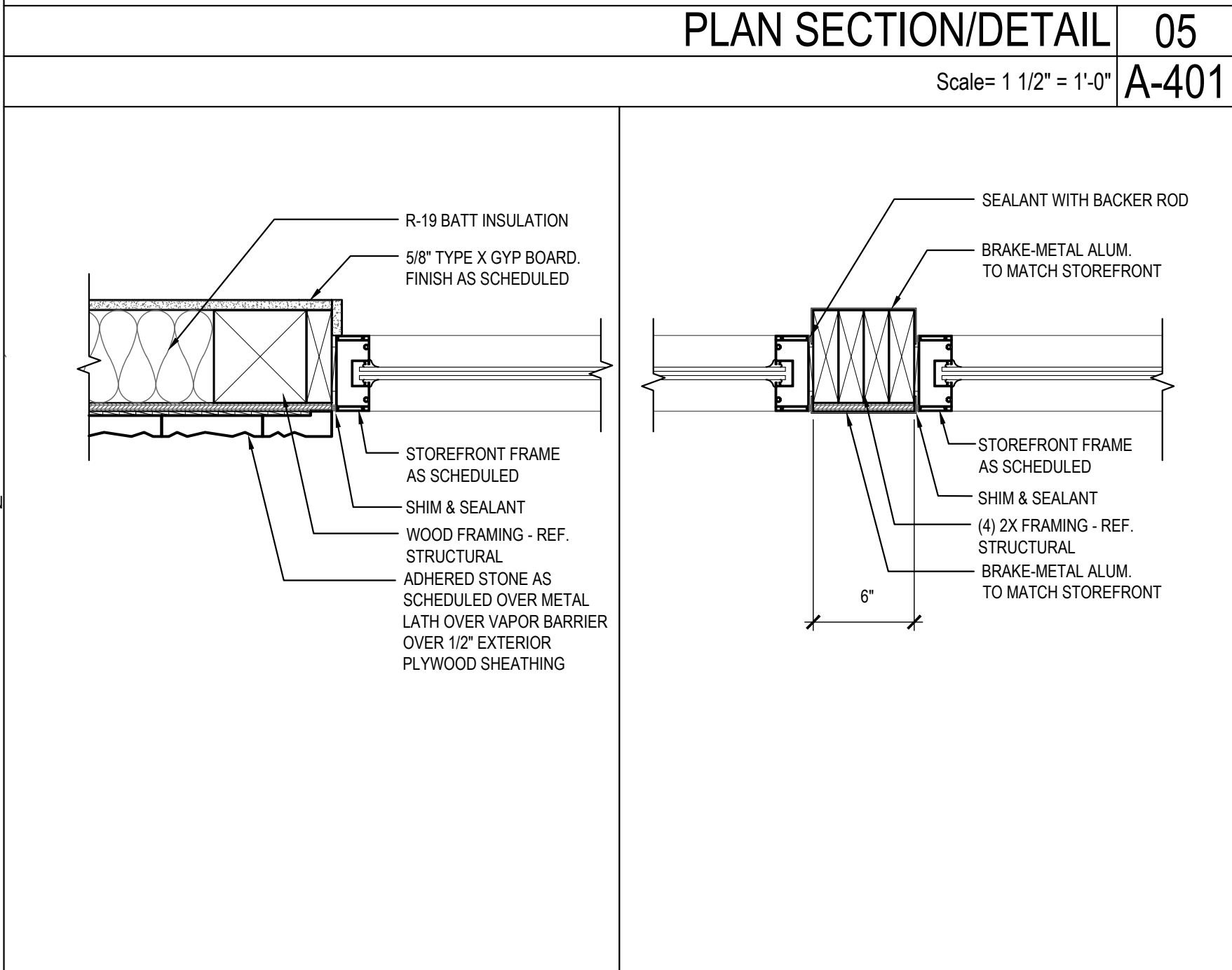
PLAN SECTION/DETAIL 08

Scale= 1 1/2" = 1'-0" A-401



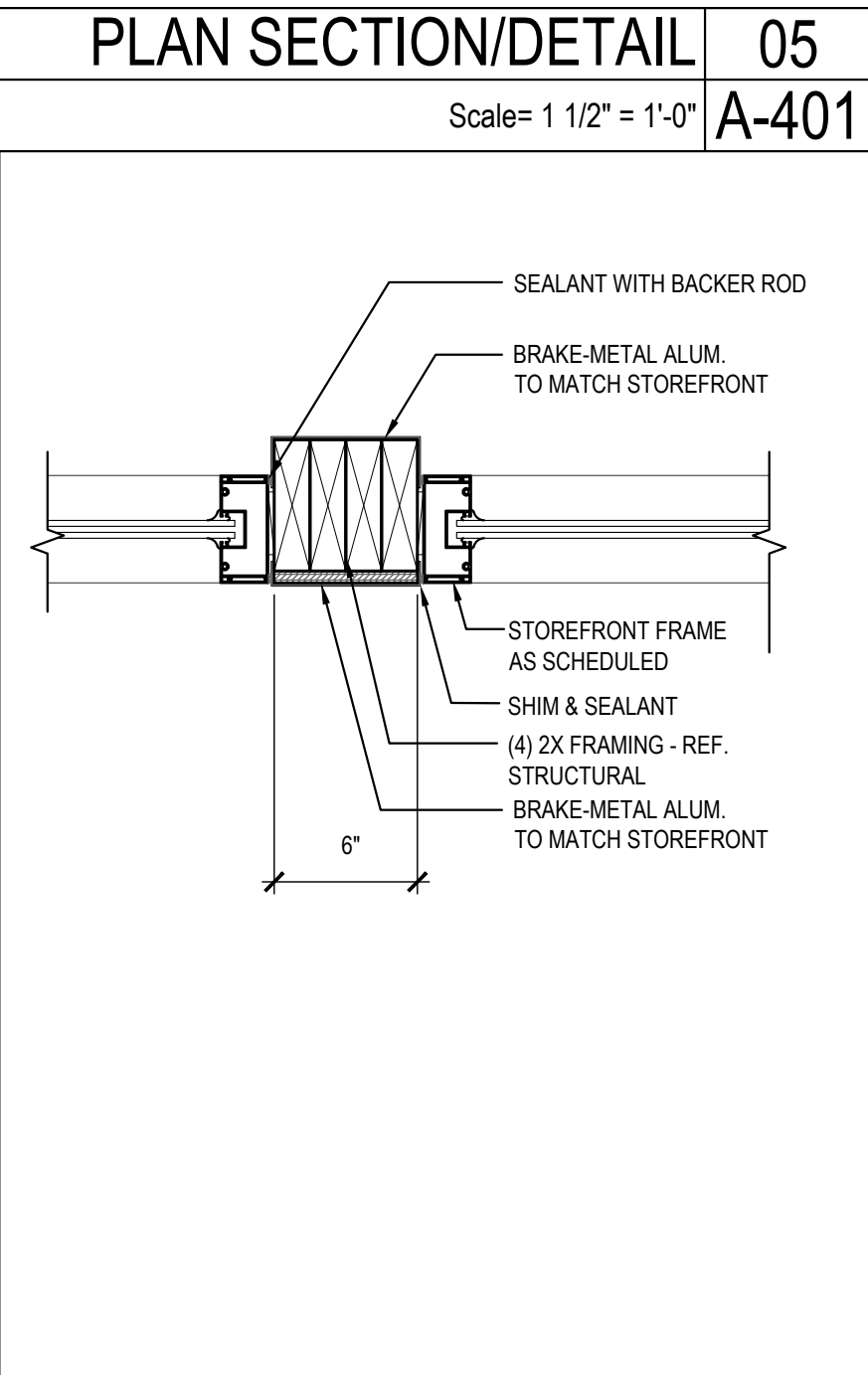
PLAN SECTION/DETAIL 05

Scale= 1 1/2" = 1'-0" A-401



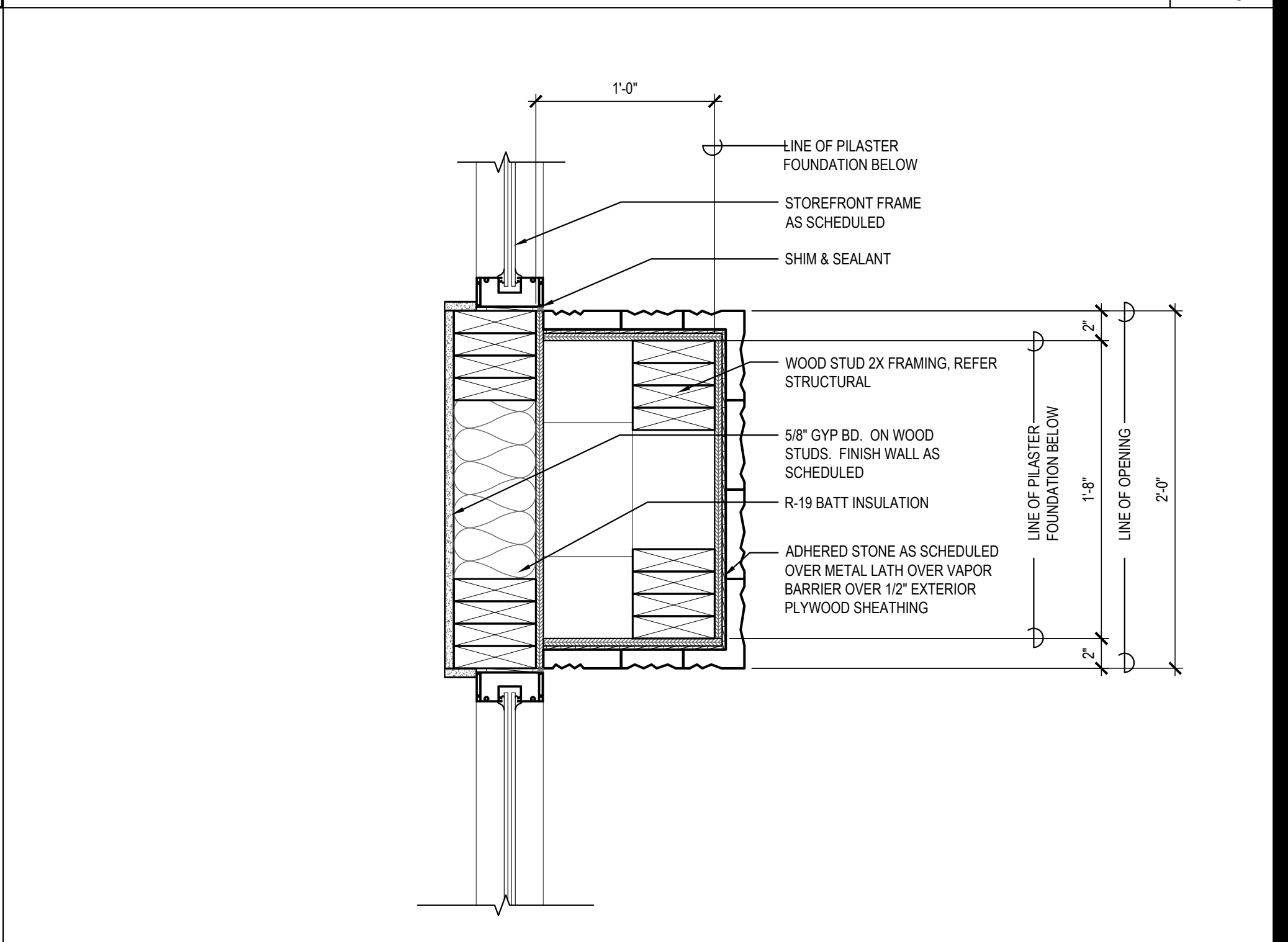
PLAN SECTION/DETAIL 07

Scale= 1 1/2" = 1'-0" A-401



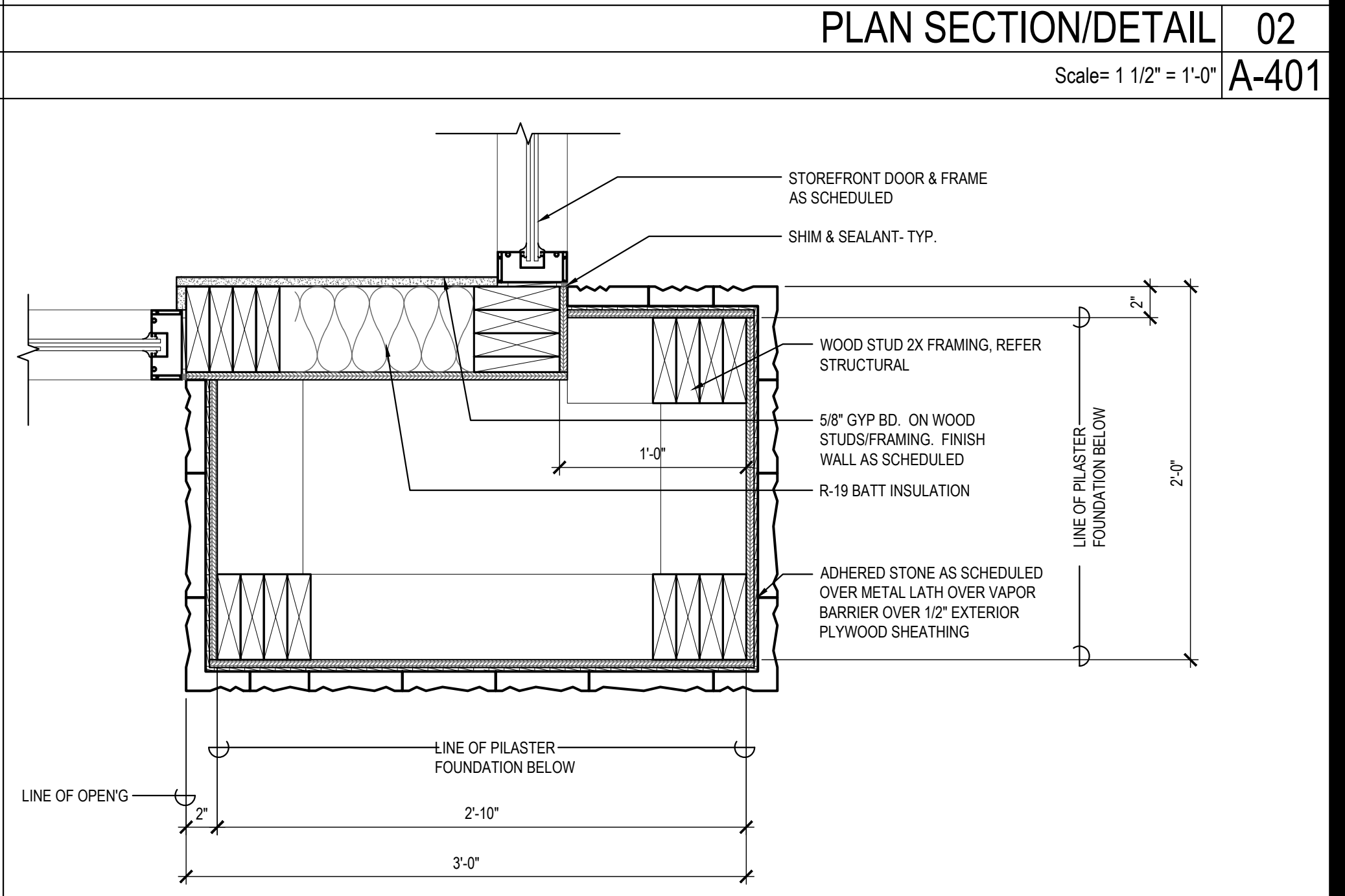
PLAN SECTION/DETAIL 04

Scale= 1 1/2" = 1'-0" A-401



PLAN SECTION/DETAIL 02

Scale= 1 1/2" = 1'-0" A-401



PLAN SECTION/DETAIL 01

Scale= 1 1/2" = 1'-0" A-401



PANDA EXPRESS, INC.  
1683 Walnut Grove Ave.  
Rosemead, California  
91770  
Telephone: 626.799.9898  
Facsimile: 626.372.8288

All ideas, designs, arrangement and plans indicated or represented by this drawing are the property of Panda Express Inc. and were created for use on this specific project. None of these ideas, designs, arrangements or plans may be used by or disclosed to any person, firm, or corporation without the written permission of Panda Express Inc.

REVISIONS:


ISSUE DATE:

1st	PERMIT SET	10-5-18
2nd	BID SET	11-20-18

DRAWN BY:

PANDA PROJECT #: S8-19-D6462  
ARCH PROJECT #: 18044.013



**K. Klover Architect**  
10955 LOWELL AVENUE, SUITE 700  
OVERLAND PARK, KS 66210  
ph: 913.649.8181 • fx: 913.649.1275

**PANDA EXPRESS**  
TRUE WARM & WELCOME 2200  
Conestoga Pkwy & Historical Trail  
Shepherdsville, KY, 40165

**A-401**  
ARCHITECTURAL  
DETAILS

TRUE WARM & WELCOME 2200

BID SET 11.20.18