

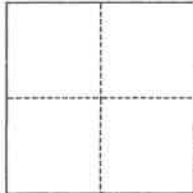
CORNER RECORD

Agency Index BK 147 PG 18
Document Number CR 16007

City of SAN LEANDRO County of ALAMEDA, California
Brief Legal Description MONUMENT NEAR 16851 LIBERTY ST

CORNER TYPE

COORDINATES (Optional)



- ☐ Government Corner ☐ Control
☐ Meander ☐ Property
☐ Rancho ☐ Other

Date of Survey March 16, 2022

N. E.
Elevation
Units ☐ Metric ☐ U.S. Survey Foot
Horizontal Datum
Zone Epoch Date
Vertical Datum
☐ Complies with Public Resources Code §§8801-8819
☐ Complies with Public Resources Code §§8890-8902

PLS Act Ref.: ☐ 8765(d) ☒ 8771 ☐ 8773 ☐ Other:
Corner/
Monument: ☒ Left as found ☐ Established ☐ Rebuilt ☒ Pre-Construction
☐ Found and tagged ☐ Reestablished ☒ Referenced ☐ Post-Construction

Narrative of corner identified and monument as found, set, reset, replaced, or removed:

☒ See sheet #2 for description(s):

SURVEYOR'S STATEMENT

This Corner Record was prepared by me or under my direction in conformance with

the Professional Land Surveyors' Act on March 23, 2022

Signed *Joseph M. Brajkovich* P.L.S. or R.C.E. No. 5254



COUNTY SURVEYOR'S STATEMENT

This Corner Record was received

and examined and filed APR 19 2022

Signed *D. Ian Wilson* P.L.S. or R.C.E. No. 7010

Title ALAMEDA COUNTY SURVEYOR

County Surveyor's Comment



LEGEND

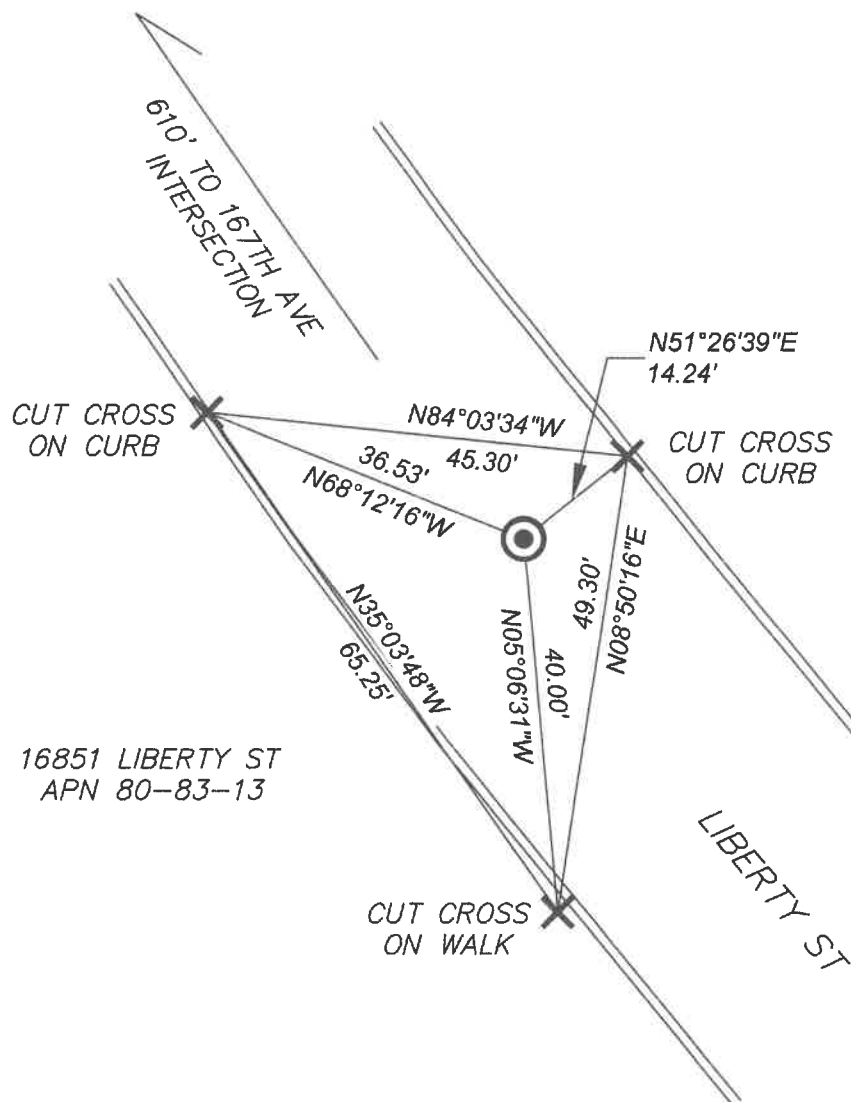
STREET ADDRESS

APN ASSESSOR'S PARCEL NUMBER

FOUND SURVEY MONUMENT (PUNCH IN 3"
BRASS DISC IN CONCRETE 0.6' BELOW
GRADE IN WELL)

CUT CROSS SET AS DISPLAYED

SCALE: 1" = 20'



22-104 SHEET C-62