

# CORNER RECORD

Agency Index

BOOK 109 PAGE 13

Document Number

CR 11163

City of BERKELEYCounty of ALAMEDA, California

## Brief Legal Description

CITY OF BERKELEY (C.O.B.) MONUMENT B0286 NEAR THE INTERSECTION OF MABEL STREET AND PARKER STREET.

## CORNER TYPE

## COORDINATES (Optional)

RANCHO  
SAN  
ANTONIO  
(V & D PERALTA)Government Corner ☐ Control  
Meander ☐ Property  
Rancho ☐ OtherN. 2140485.9 ± E. 6046354.4 ±  
☒ Elevation  
Units ☐ Metric ☐ U.S. Survey Foot ☒  
Horizontal Datum CCS 83  
Zone 3 Epoch Date  
Vertical DatumDate of Survey 3/20/2018☐ Complies with Public Resources Code §§8801-8819  
☐ Complies with Public Resources Code §§8890-8902PLS Act Ref: ☐ 8765(d) ☒ 8771 ☐ 8773 ☐ Other:Corner/  
Monument: ☒ Left as found ☐ Established ☐ Rebuilt ☒ Pre-Construction  
☐ Found and tagged ☐ Reestablished ☒ Referenced ☐ Post-Construction

Narrative of corner identified and monument as found, set, reset, replaced, or removed:

☒ See sheet #2 for description (s):

FOUND MONUMENT THAT COULD BE DAMAGED OR DESTROYED BY A PROPOSED GAS LINE CONSTRUCTION PROJECT. MONUMENT WAS REFERENCED AS SHOWN ON PAGE 2 OF 2.

THE PURPOSE OF THIS CORNER RECORD IS TO PRESERVE THE LOCATION OF THE MONUMENT PRIOR TO CONSTRUCTION. NO ATTEMPT WAS MADE TO DETERMINE THE RELATIONSHIP BETWEEN THE MONUMENT AND PROPERTY LINES, RIGHT-OF-WAY LINES, CENTERLINES OR OTHER MONUMENTS.

## SURVEYOR'S STATEMENT

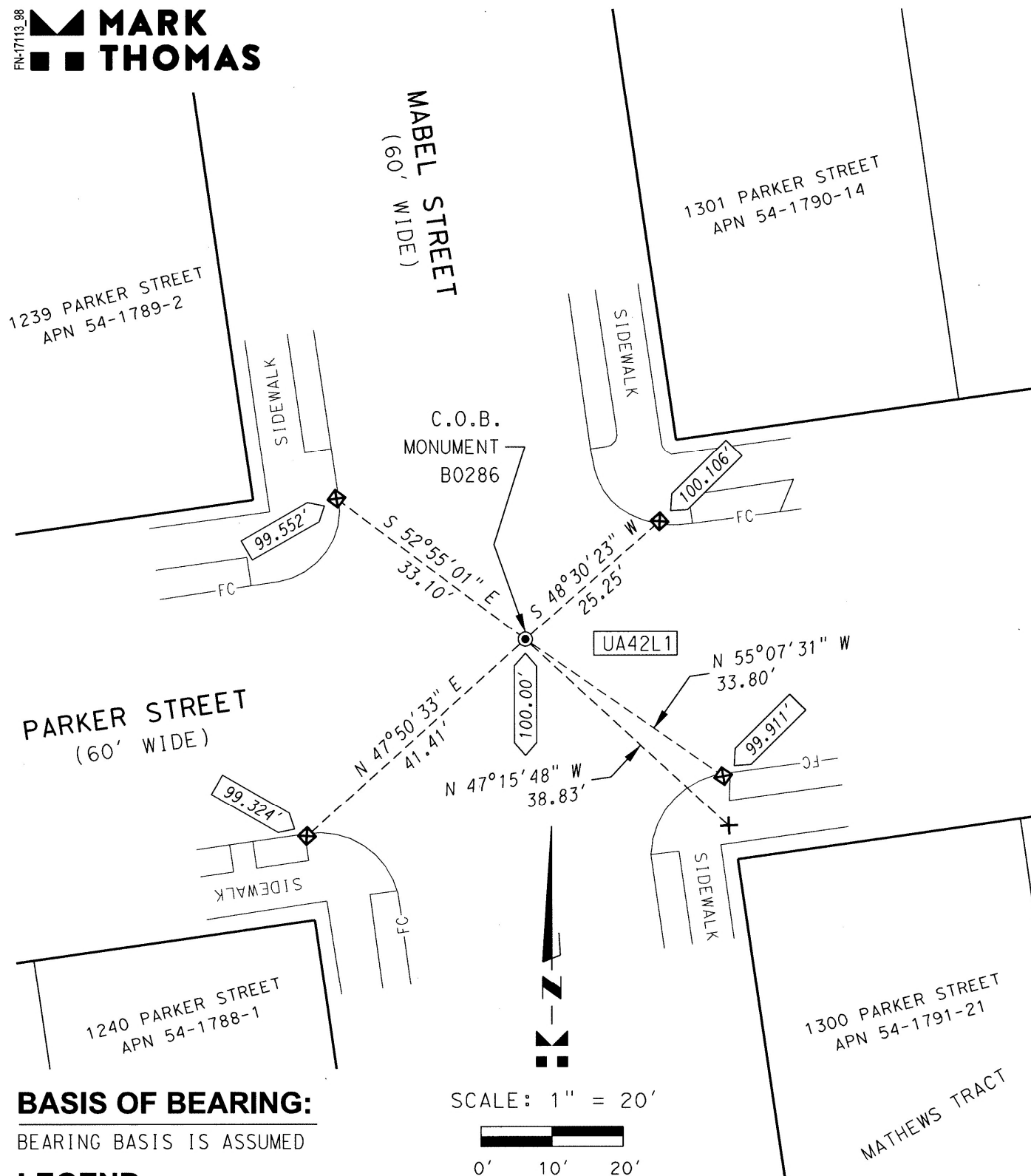
This Corner Record was prepared by me or under my direction in conformance with  
the Professional Land Surveyors' Act on JUNE 8, 2018Signed Erik Paul Kiel P.L.S. or ~~P.C.E.~~ No. 8911

## COUNTY SURVEYOR'S STATEMENT

This Corner Record was received 4 APRIL 2018and examined and filed 28 JUNE 2018Signed Michael Rubner P.L.S. or ~~P.C.E.~~ No. 6843Title COUNTY SURVEYOR

County Surveyor's Comment

FN-17113\_98  
 **MARK  
THOMAS**



### BASIS OF BEARING:

BEARING BASIS IS ASSUMED

### LEGEND:

- FOUND 7/8" IRON PIN IN WELL
- ⊠ SET CUT CROSS FOR REFERENCE POINT IN TOP OF CONCRETE CURB
- ✕ FOUND CUT CROSS IN CONCRETE WALK (USED AS REFERENCE POINT)
- 100.00' MONUMENT ELEVATION (ASSUMED)
- XXX.XXX' REFERENCE POINT ELEVATION (ESTABLISHED USING A DIGITAL LEVEL)
- UA42L1 ALAMEDA COUNTY MONUMENT IDENTIFICATION NUMBER