

NOTES:

- POINT OF COMMENCEMENT PER INSTRUMENT NUMBER 2014-11016 M.C.R.
CALIFORNIA STATE PLANE, ZONE II COORDINATE;
NORTHING 2119493.70
EASTING 6140316.76
- POINT OF COMMENCEMENT PER INSTRUMENT NUMBER 2013-15940 M.C.R.
CALIFORNIA STATE PLANE, ZONE II COORDINATE;
NORTHING 2119054.91
EASTING 6140116.89
- POINT OF BEGINNING PER INSTRUMENT NUMBER 2015-14047 M.C.R.
CALIFORNIA STATE PLANE, ZONE II COORDINATE;
NORTHING 2115850.50
EASTING 6139259.73
- THE PURPOSE OF THIS RECORD OF SURVEY IS TO ILLUSTRATE THE LOCATIONS OF THE RIGHT OF WAY MONUMENTS DESCRIBED IN THE GRANT DEED RECORDED IN
INSTRUMENT NUMBER 2014-11016 M.C.R.
INSTRUMENT NUMBER 2013-15940 M.C.R.
INSTRUMENT NUMBER 2015-14047 M.C.R.

BASIS OF BEARINGS

CALIFORNIA STATE PLANE, ZONE II DETERMINED BY GPS OBSERVATIONS ON MAY 6, 2013 AND PROCESSED WITH CONTINUOUSLY OPERATING REFERENCE STATIONS AS COORDINATED BY THE NATIONAL GEODETIC SURVEY, EPOCH 2013.290. DISTANCES SHOWN HEREON ARE GROUND DISTANCES TO OBTAIN GRID DISTANCES MULTIPLY DISTANCES SHOWN BY 0.999895379.

LEGEND

- SET 3/4" IRON PIPE WITH PLASTIC PLUG MARKED "MDOOT/RW LS 7148. AS DESCRIBED IN
INSTRUMENT NUMBER 2014-11016 M.C.R.
INSTRUMENT NUMBER 2013-15940 M.C.R.
INSTRUMENT NUMBER 2015-14047 M.C.R.

DISTANCES ARE SHOWN IN FEET AND DECIMALS THEREOF.

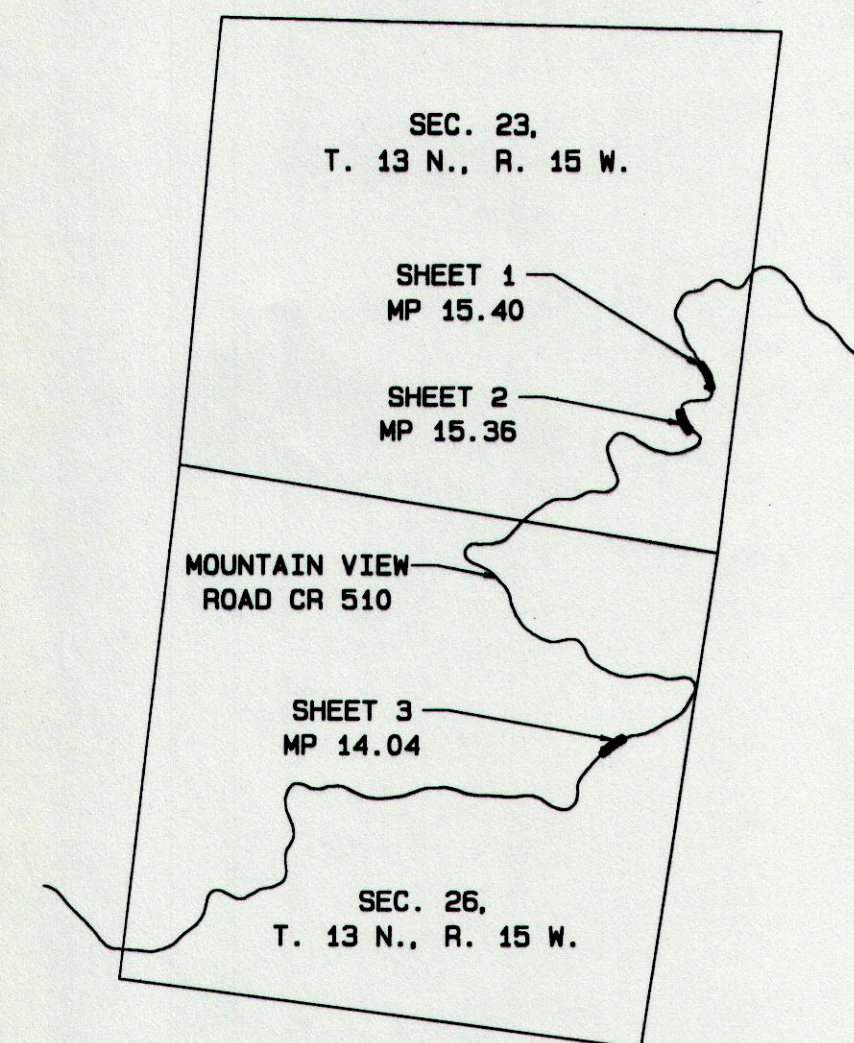
RECORD INFORMATION

THE BEARINGS AND DISTANCES OF THIS SURVEY AGREE WITH REFERENCED RECORD DATA UNLESS SHOWN OTHERWISE.

RECORD DATA FROM:

- () R1 INSTRUMENT NUMBER 2014-11016 M.C.R.
- () R2 INSTRUMENT NUMBER 2013-15940 M.C.R.
- () R3 INSTRUMENT NUMBER 2015-14047 M.C.R.

VICINITY MAP NOT TO SCALE



RECORD OF SURVEY

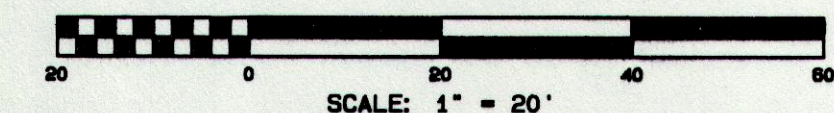
FOR

THE COUNTY OF MENDOCINO DEPARTMENT OF TRANSPORTATION

BEING A PORTION OF THE COUNTY RIGHT OF WAY
MOUNTAIN VIEW ROAD CR#510 IN THE VICINITY OF MILE
POST MARKER 15.36 AND 15.40 LOCATED IN SECTION 23
AND MILE POST MARKER 14.04 IN SECTION 26
T.13 N., R.15 W., M.D.B & M.

MENDOCINO COUNTY,
SCALE: 1" = 20'

CALIFORNIA
OCTOBER, 2013



SHN CONSULTING ENGINEERS
& GEOLOGISTS
335 SOUTH MAIN STREET (707)459-4518
WILLITS, CA 95490 FAX (707)459-1884

SURVEYOR'S STATEMENT

THIS MAP CORRECTLY REPRESENTS A SURVEY MADE BY ME OR UNDER MY DIRECTION IN CONFORMANCE WITH THE REQUIREMENTS OF THE PROFESSIONAL LAND SURVEYORS' ACT AT THE REQUEST OF THE COUNTY OF MENDOCINO DEPARTMENT OF TRANSPORTATION IN SEPTEMBER, 2013.

Matthew T. Herman
MATTHEW T. HERMAN
PLS 8335
LIC. EXP. DATE - 12/31/15



COUNTY SURVEYOR'S STATEMENT

THIS MAP HAS BEEN EXAMINED IN ACCORDANCE WITH SECTION 8766 OF THE PROFESSIONAL LAND SURVEYORS' ACT THIS
12 DAY OF NOVEMBER, 2015.

BY: Howard N. Dashiell
HOWARD N. DASHIELL, PLS 7148
LIC. EXP. DATE 6/30/17
MENDOCINO COUNTY, CALIFORNIA
COUNTY SURVEYOR



RECORDER'S STATEMENT

FILED THIS 19th DAY OF November, 2015, AT
12:00 P.M., IN MAPS, DRAWER 85, PAGE 22, 23, 24, M.C.R. AT
THE REQUEST OF SHN CONSULTING ENGINEERS & GEOLOGISTS, INC.

BY: Trichelle Chappas
SUSAN M. RANOGACH - COUNTY RECORDER DEPUTY

FEE \$ D

Serial # 067
SHEET 1 OF 3

MAPS
DRAWER 85
PAGE 22

411093.303, 304 & 305

ROS 31-13