

CORNER RECORD

Agency Index

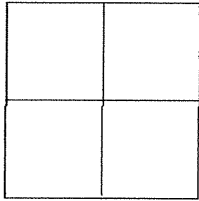
BK 128 PG 64

Document Number

CR 12901

City of BERKELEYCounty of ALAMEDA

, California

Brief Legal Description CITY OF BERKELEY MONUMENT B0406, LOCATED AT BANCROFT WAY & SIXTH STREET.**CORNER TYPE****COORDINATES (Optional)**

Government Corner ☐ Control ☒
Meander ☐ Property ☐
Rancho ☐ Other ☐

Date of Survey 2/1/19

N. _____ E. _____

Elevation _____

Units _____ Metric ☐ U.S. Survey Foot ☐

Horizontal Datum _____

Zone _____ Epoch Date _____

Vertical Datum _____

☐ Complies with Public Resources Code §§8801-8819☐ Complies with Public Resources Code §§8801-8902

PLS Act Ref.:

☐ 8765(d)☒ 8771☐ 8773☐ Other:Corner/
Monument:☐ Left as found☐ Established☐ Rebuilt☒ Pre-Construction☐ Found and tagged☐ Reestablished☒ Referenced☐ Post-Construction

Narrative of corner identified and monument as found, set, reset, replaced, or removed.

☒ See sheet #2 for description(s)**SURVEYOR'S STATEMENT**

This Corner Record was prepared by me or under my direction in conformance with

the Professional Land Surveyor's Act on FEBRUARY 4, 2019

Signed

P.L.S. or P.C.E. No.

8178**COUNTY SURVEYOR'S STATEMENT**

This Corner Record was received

MAR 29 2019

and examined and filed

NOV 18 2019

Signed

P.L.S. or P.C.E. No.

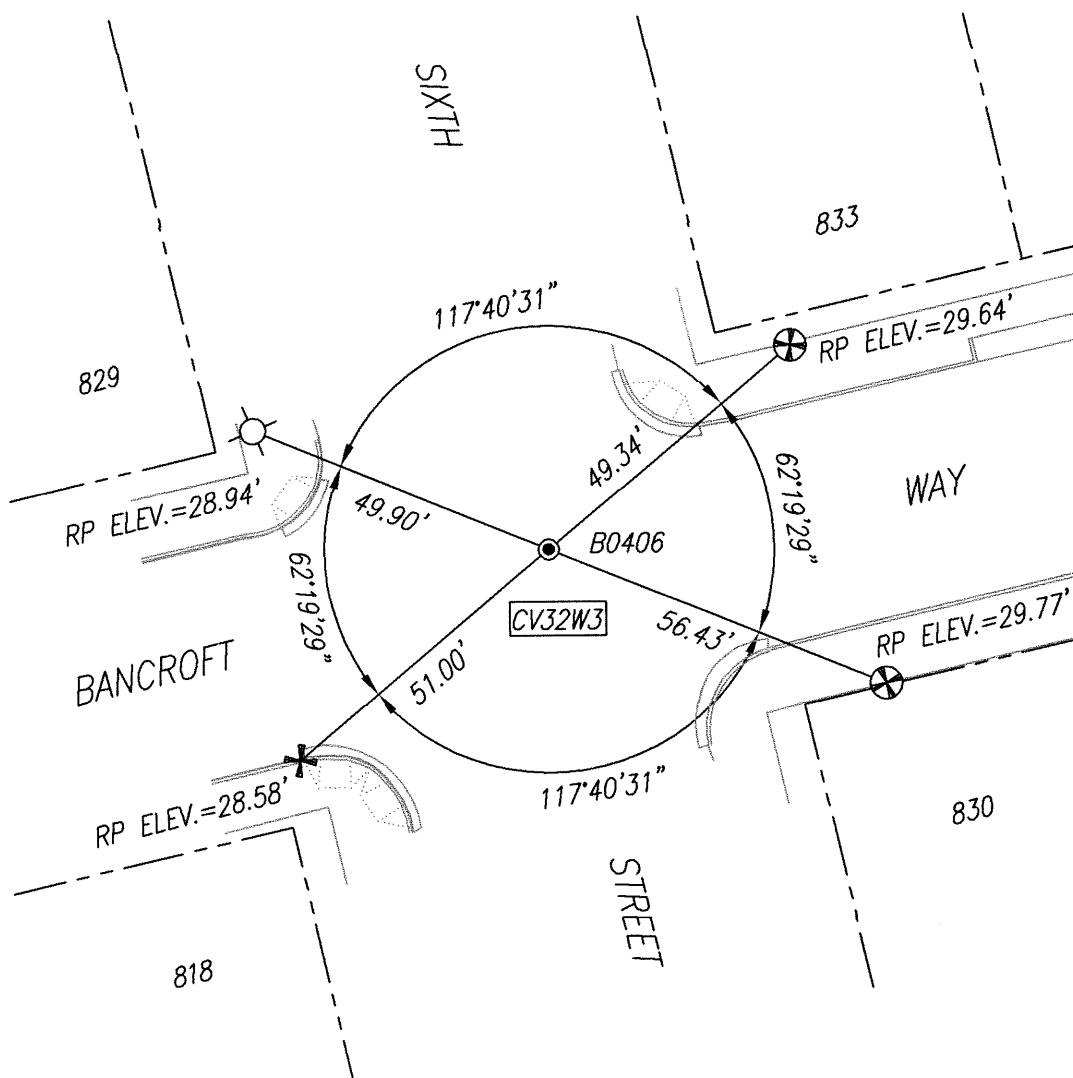
7010

Title

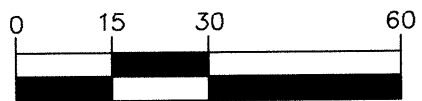
ALAMEDA COUNTY SURVEYOR**County Surveyor's Comment**

KSR JOB# 19653-19-02

NOTE: RP ELEVATIONS ESTABLISHED BY DIFFERENTIAL LEVELING
UTILIZING A SOKKIA SDL30 DIGITAL LEVEL.



GRAPHIC SCALE



(IN FEET)
1 inch = 30 ft.

LEGEND

- = FOUND CITY MONUMENT B0406; 1/4" BRASS PIN, IN STANDARD WELL.
ELEVATION = 29.00' COB DATUM
- ⊗ = FOUND CUT CROSS ON WALK PER CR 4483 (RP)
- ✕ = FOUND CUT CROSS ON TC PER CR 4483 (RP)
- ⊙ = SET MAG NAIL IN WALK REFERENCE POINT (RP)

AA ## A# = ALAMEDA COUNTY MONUMENT ID