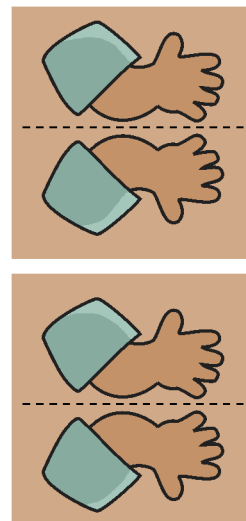
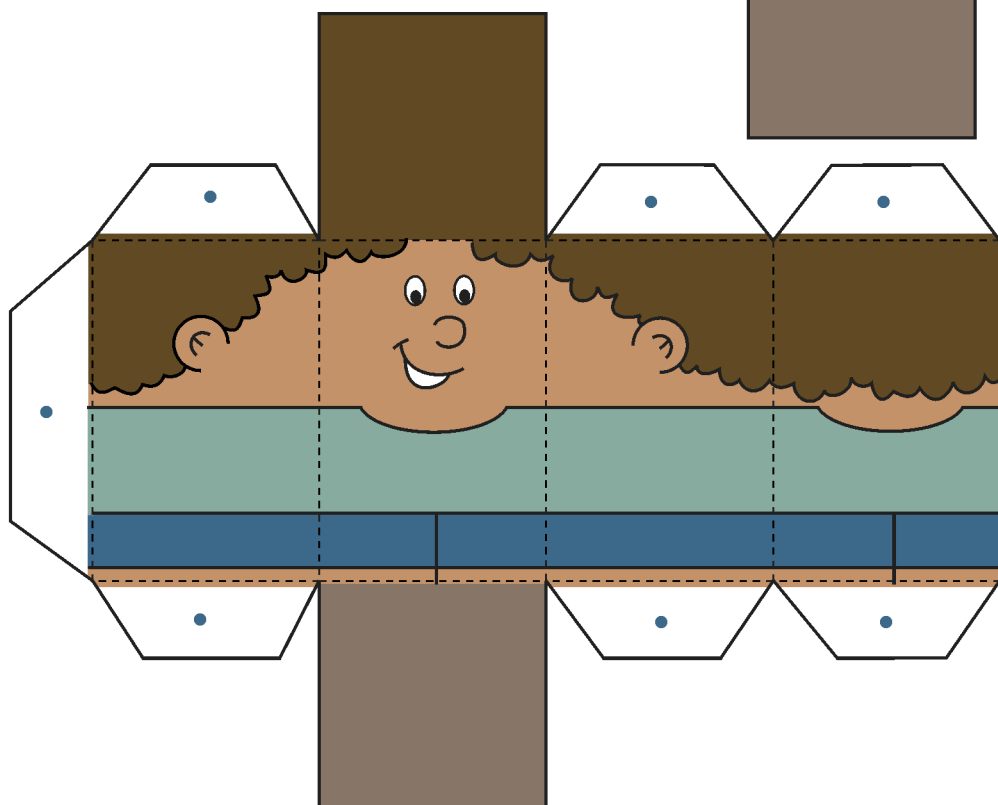
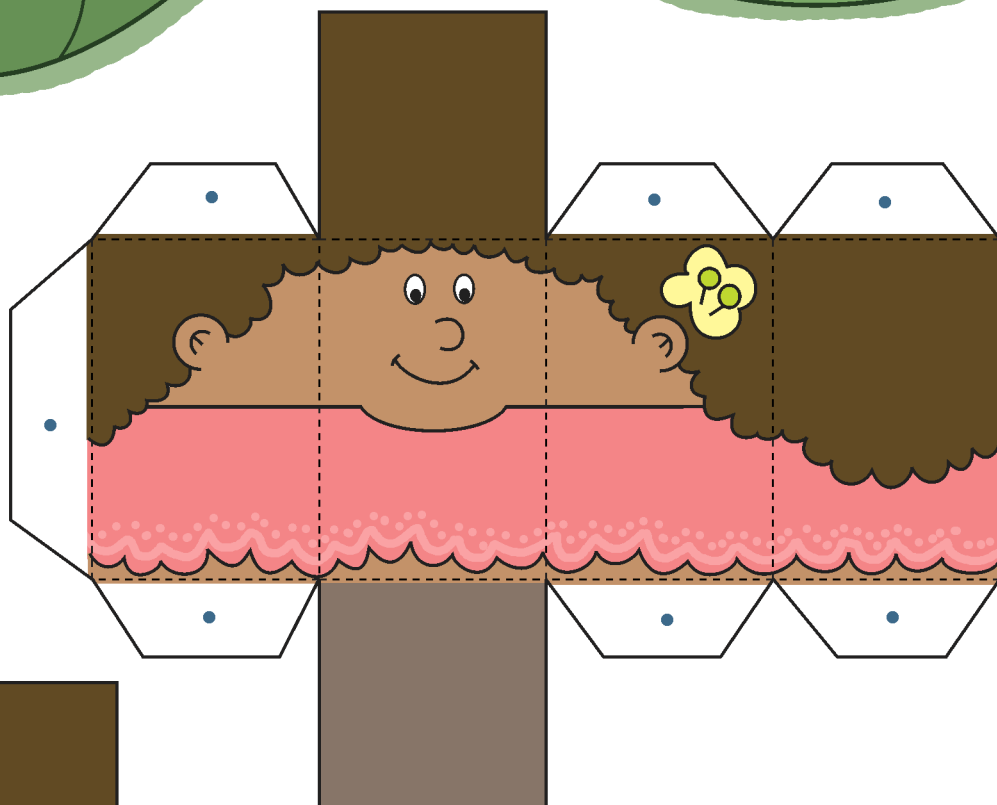
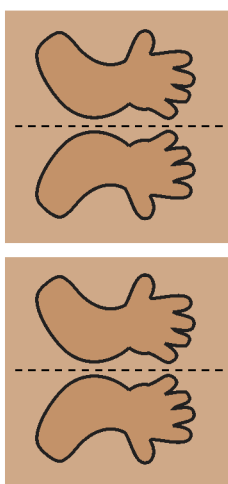
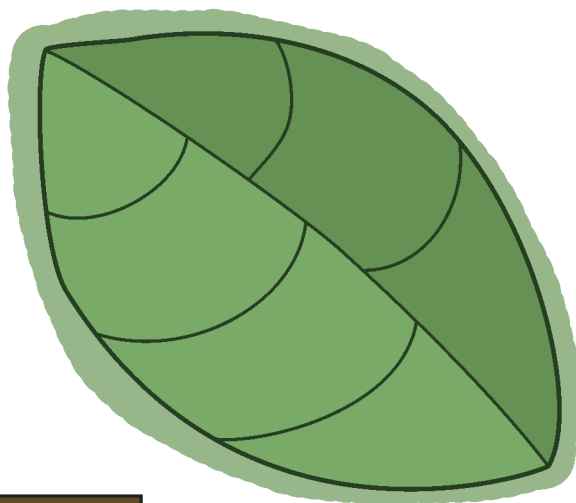
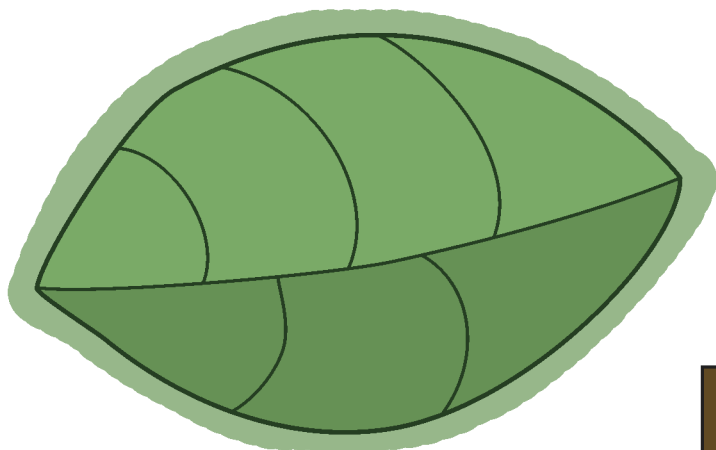
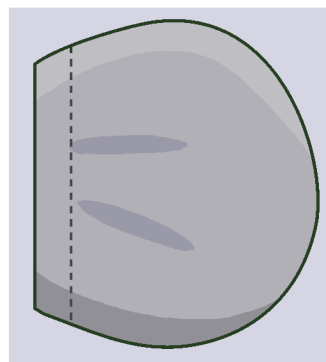
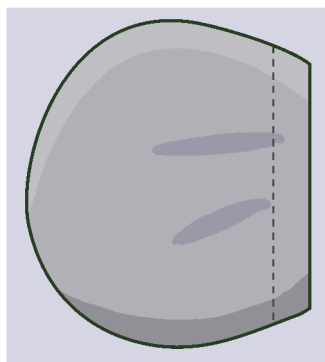
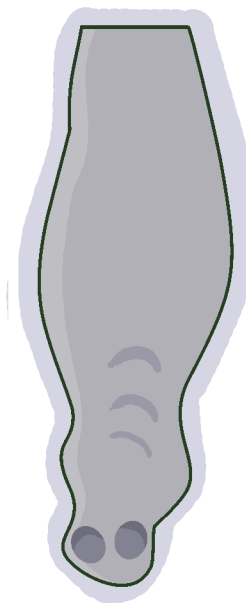
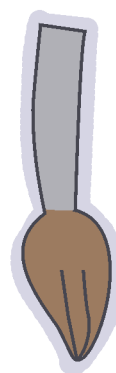
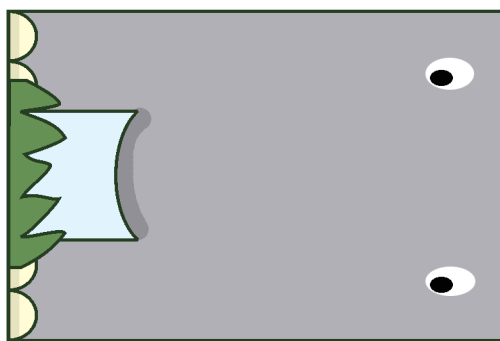
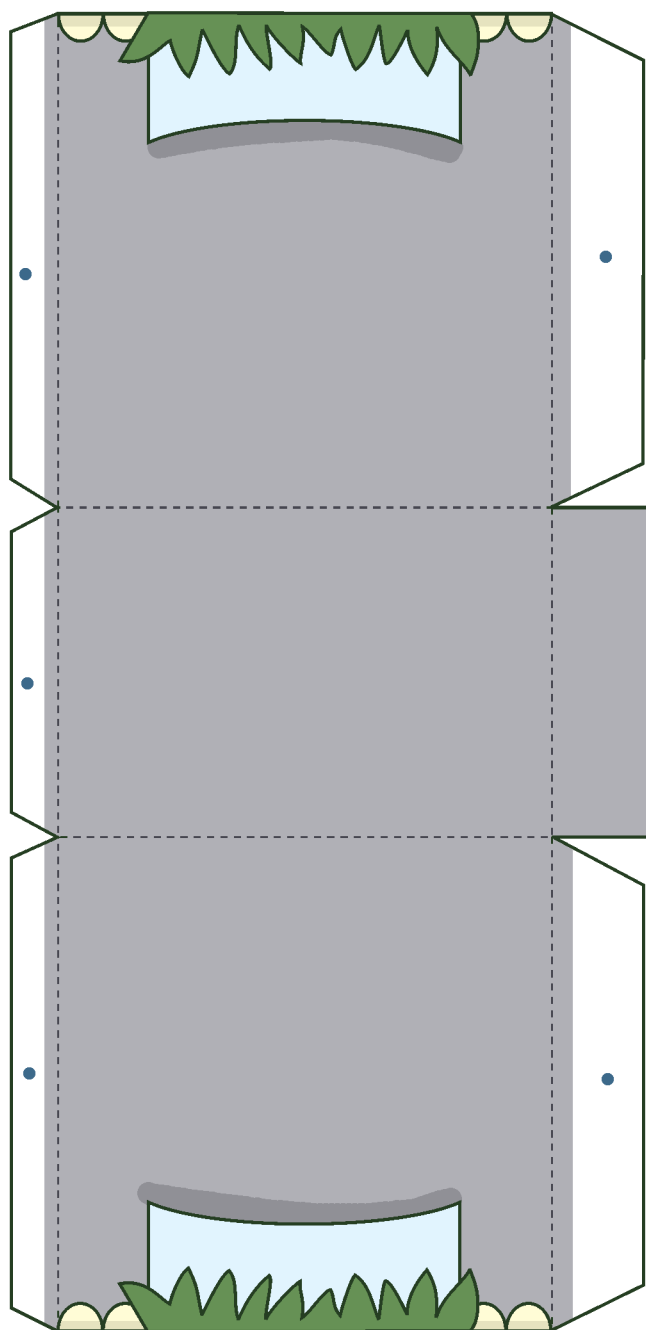
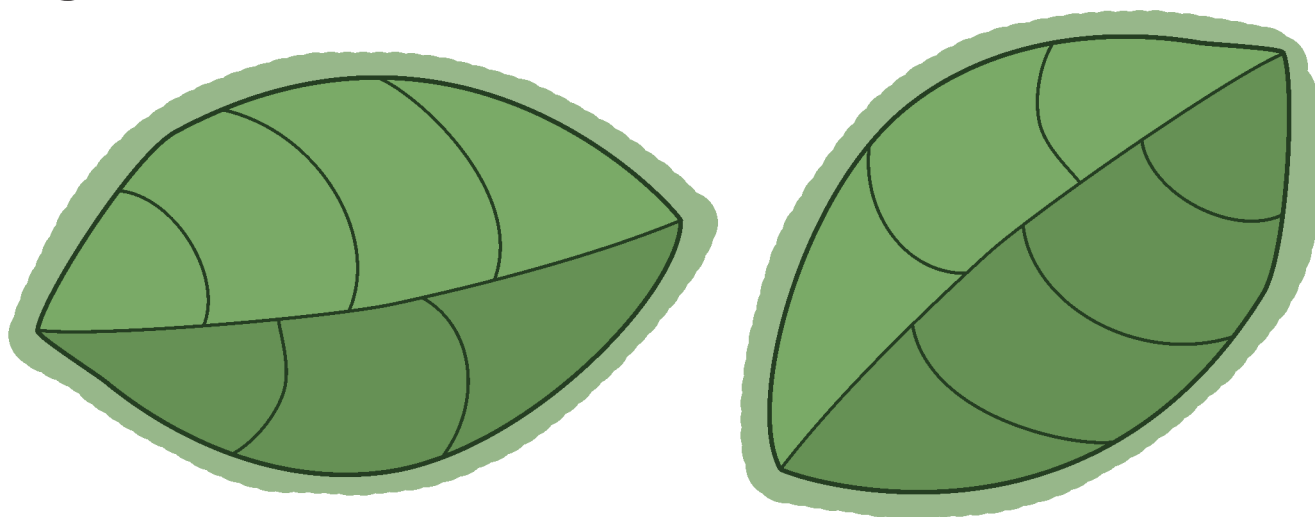


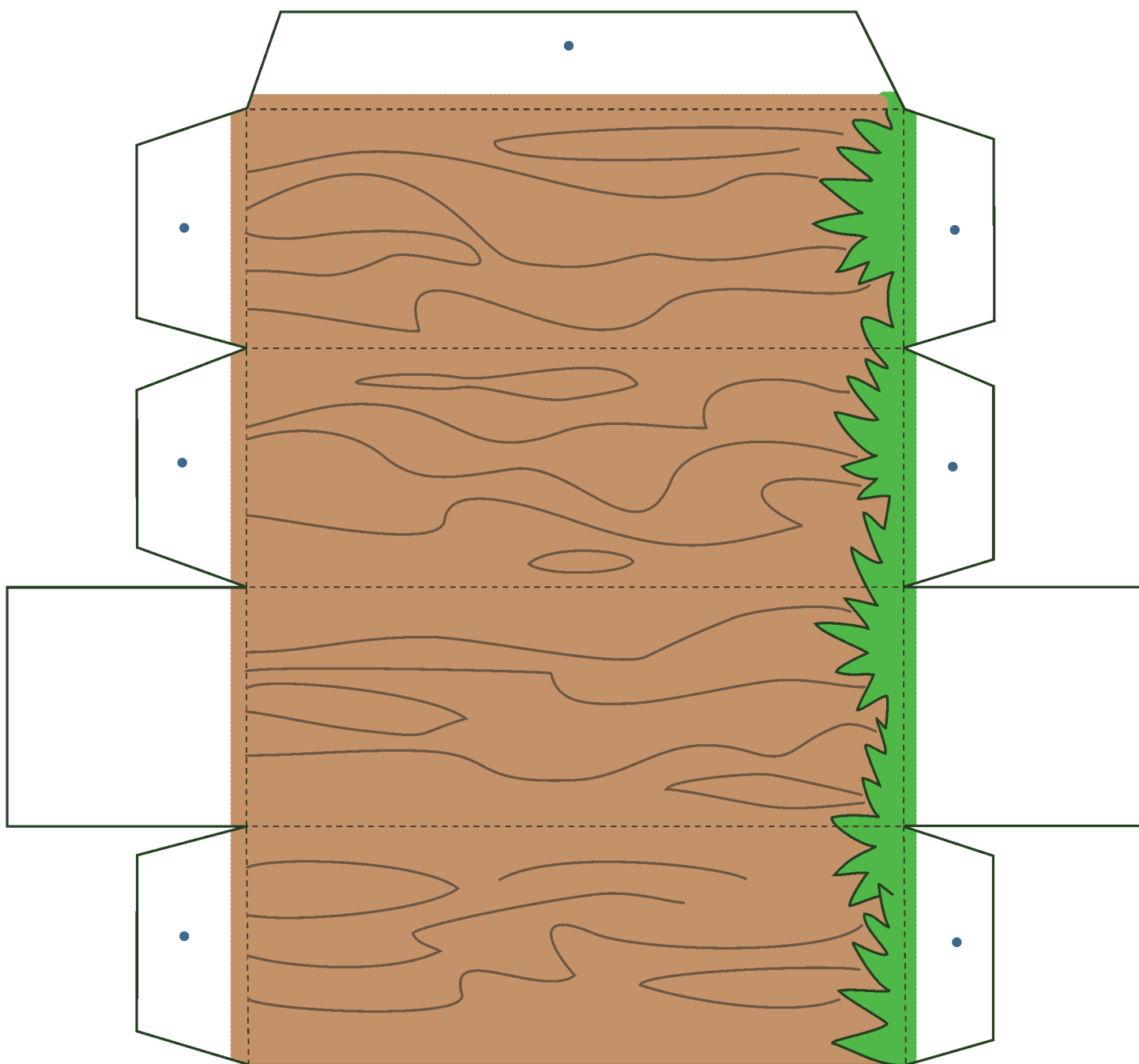
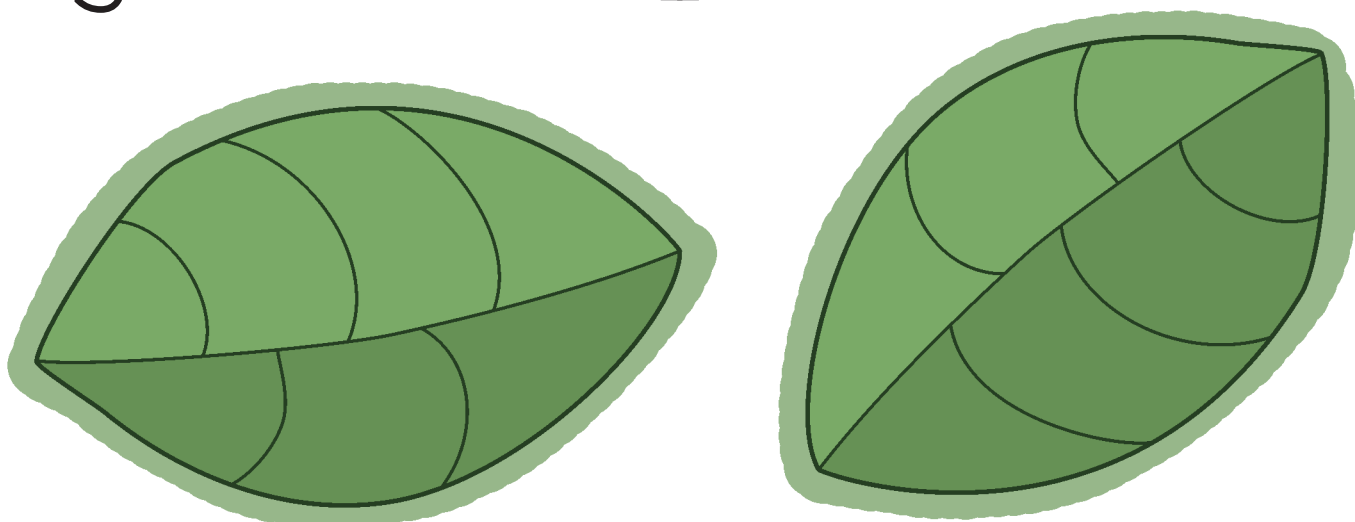
Jungle Adventures #1



Jungle Adventures #1



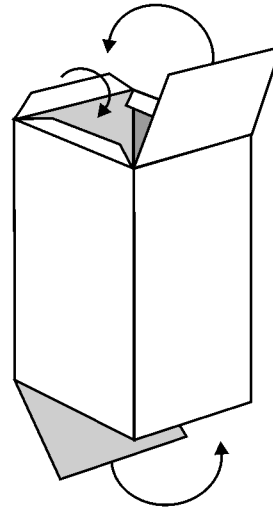
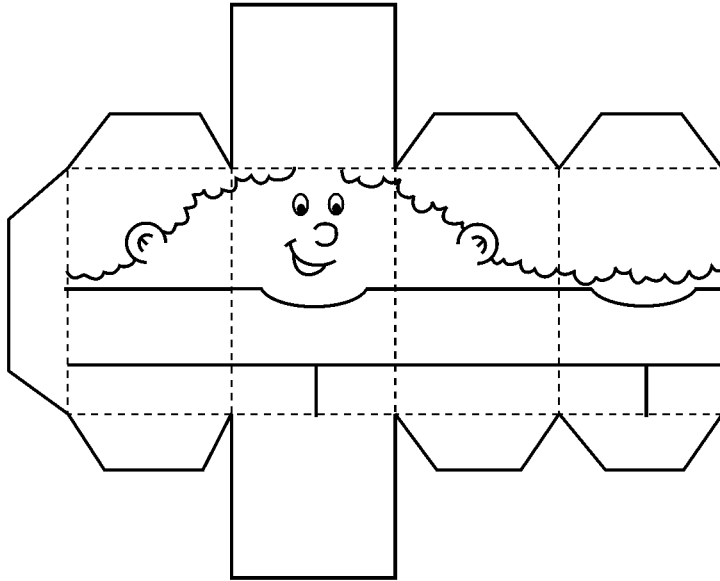
Jungle Adventures #1



Assembly Instructions for "Jungle Adventures #1"

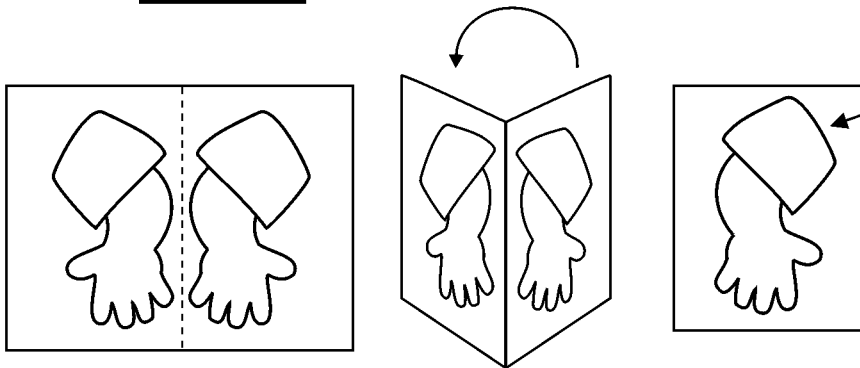
How to assemble Bidou and Boubou:

Score, cut, and fold to form a box. Glue the side first, then glue the top and bottom.



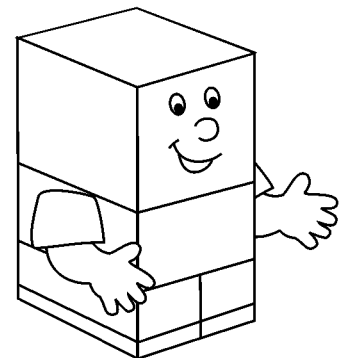
TO SCORE

Score the fold lines to make a crisp straight fold. To score, place a metal ruler along the fold line (dotted lines), and then press with a dull point (a dry pen or dull knife) along the fold line to compress the paper. This will help to achieve a crisp fold.

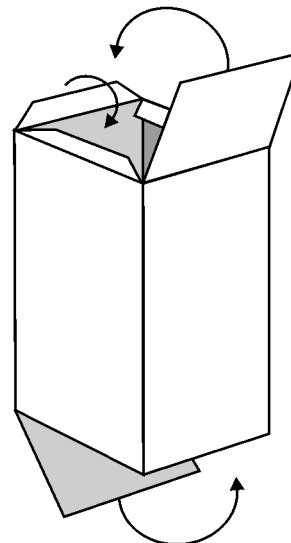
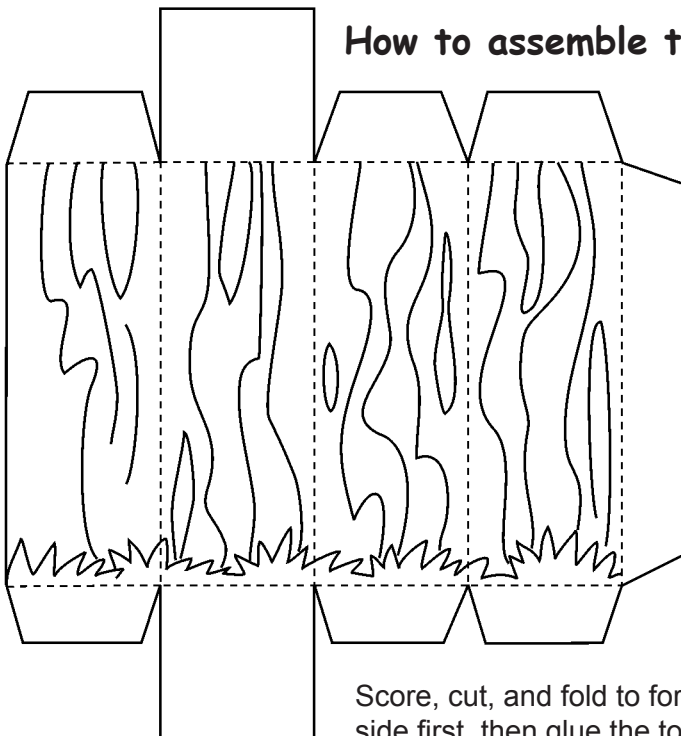


Tip: When cutting around the arms, you don't necessarily have to cut right on the black line. You can cut a millimeter or two outside of it in the colored area.

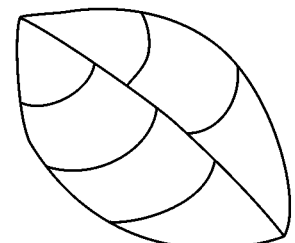
To form the arms: Fold in the middle, glue together, and when dry, cut around the arm.



How to assemble the tree:

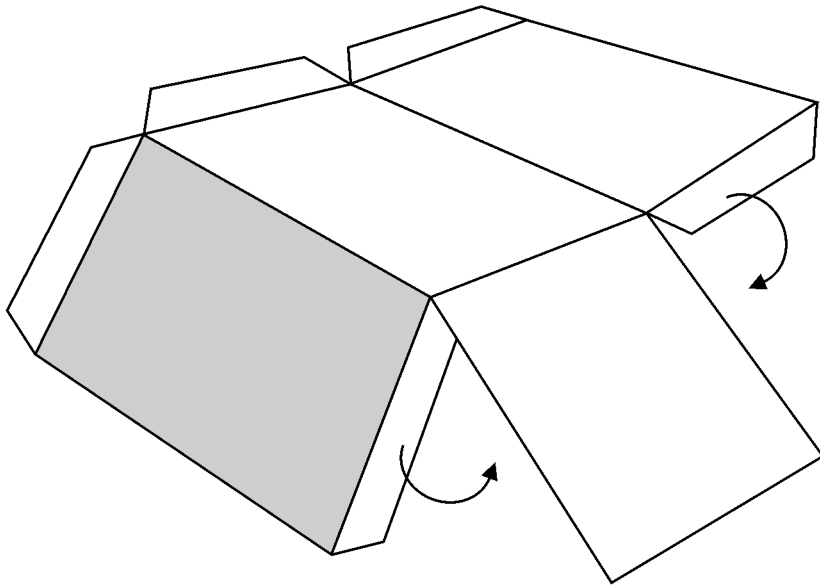


After assembling the tree trunk, cut out the leaves and glue them on the top (see the photo).



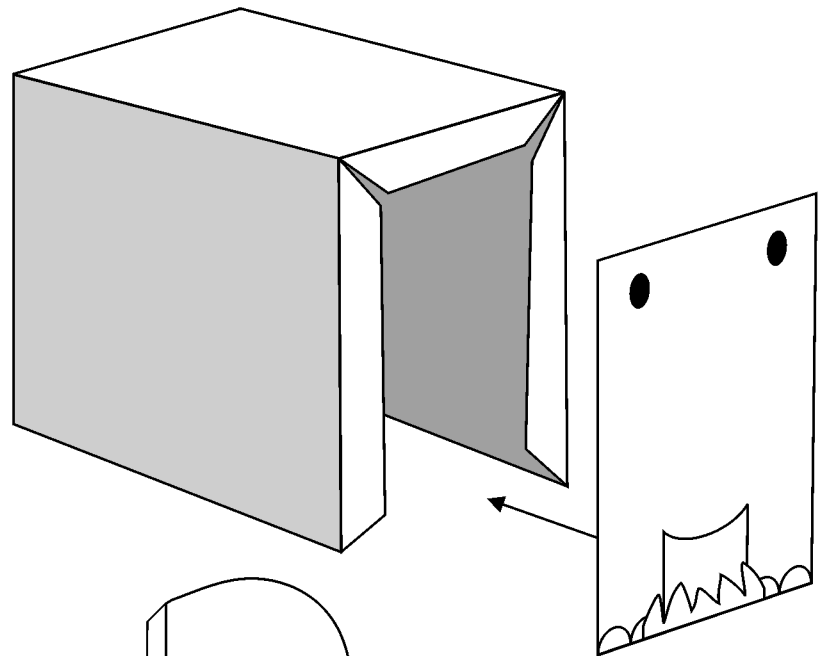
Score, cut, and fold to form a box. Glue the side first, then glue the top and bottom.

Assembly Instructions for "Jungle Adventures #1"



How to assemble the young elephant:

Score, cut and fold to form a box, then add the front part.



Next cut out the rest of the parts, the trunk, the tail, and the ears. After cutting the trunk and the tail, slightly bend them and attach them to the top of the body. Then glue the ears to the side.

