

CORNER RECORD

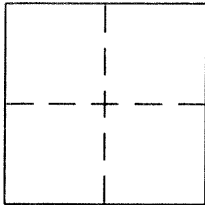
Bk 35 Pg 39

Document Number CR3939

City of SAN LEANDRO

County of ALAMEDA, California

Brief Legal Description ON WASHINGTON AVENUE, BETWEEN CALIENTE DRIVE AND BRADRICK DRIVE
IN THE CITY OF SAN LEANDRO



CORNER TYPE

Government Corner ☐ Control ☐
Meander ☐ Property ☐
Rancho ☐ Other ☒
Date of Survey 9-25-09

COORDINATES (Optional)

N. _____
E. _____
Zone: _____ NAD27 ☐ NAD83 ☐
NAD83 Epoch _____
Elev. _____
Vert. Datum: NGVD29 ☐ NAVD88 ☐
Meas. Units: Metric ☐ Imperial ☐

Corner - Left as found ☒ Found and tagged ☐ Established ☐ Reestablished ☐ Rebuilt ☐

Identification and type of corner found: Evidence used to identify or procedure used to establish or reestablish the corner:

FOUND 2-1/2" BRASS DISK STAMPED "CITY OF SAN LEANDRO", IN MONUMENT WELL, WITH PUNCH.

THE DISK WAS REFERENCED OUT IN PREPARATION OF A ROADWAY CONSTRUCTION PROJECT. FOUR
CUT CROSSES WERE SET AS REFERENCE POINTS AS SHOWN.

A description of the physical condition of the monument as found and as set or reset: MONUMENT WAS FOUND IN GOOD
CONDITION.

SURVEYOR'S STATEMENT

This Corner Record was prepared by me or under my direction in conformance with
the Land Surveyor's Act on SEPTEMBER 30, 2009.

Signed KEVIN J. MARTIN P.L.S. No. 8345

KEVIN J. MARTIN
Kier & Wright, Civil Engineers & Surveyors, Inc., Pleasanton, CA

COUNTY SURVEYOR'S STATEMENT

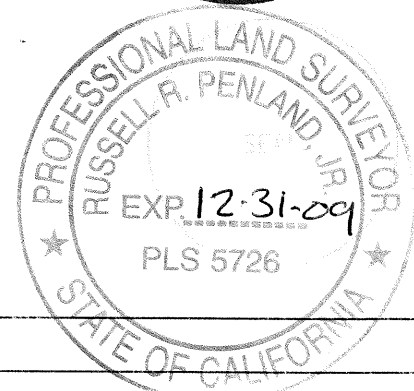
This Corner Record was received 10-05-09

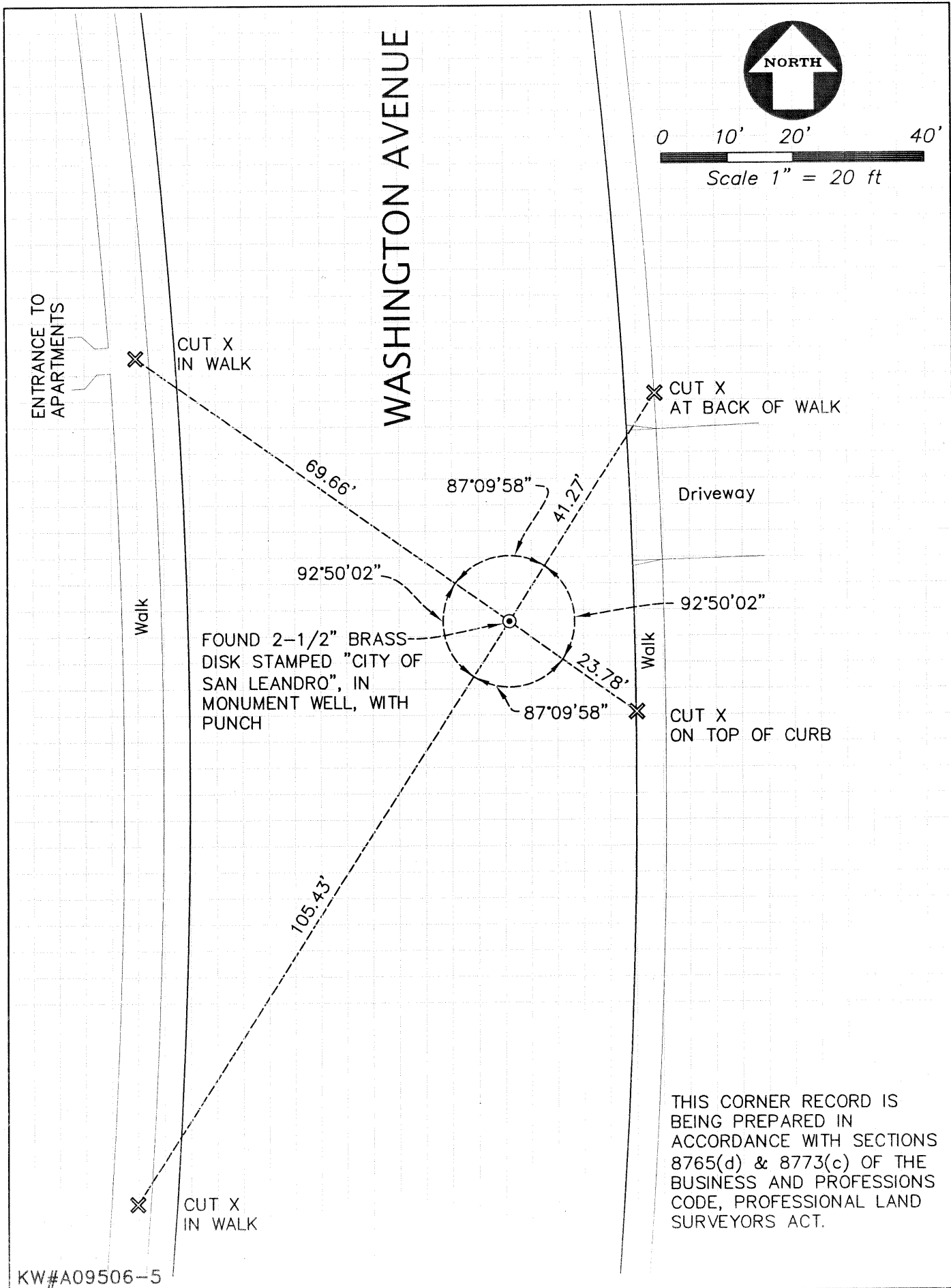
and examined and filed 11-20-09

Signed Russell R. Penland, Jr. P.L.S. or R.C.E. No. 5726

Title COUNTY SURVEYOR

County Surveyor's Comment





KW#A09506-5