

FOR BID ONLY

US Hwy 41 - Joe Frank Harris Pkwy
(VARIABLE PUBLIC RW)

Morrisville Drive
(VARIABLE RW)

Chick-fil-A
P12-LE-1G
4,971 S.F.
98 SEATS
F.F. EL.=786.28'

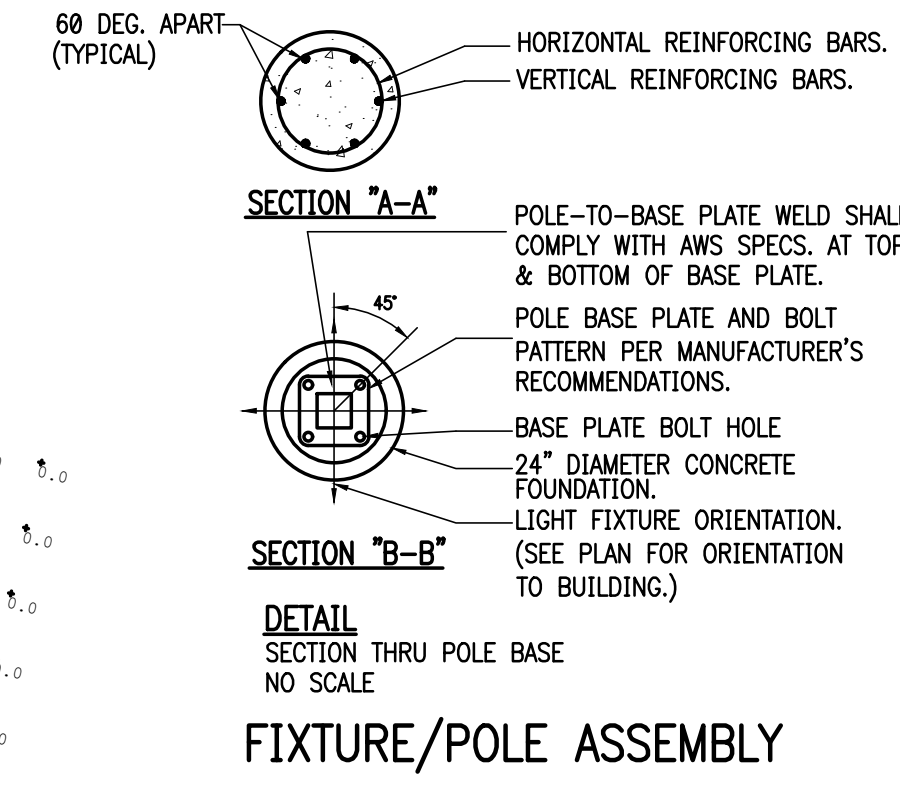
Calculation Summary					
Label	Avg	Max	Min	Avg/Min	Max/Min
EXTENDED	0.80	2.9	0.0	N.A.	N.A.
VEHICULAR SURFACE	1.58	2.9	0.7	2.26	4.14

LIGHT LEVELS ARE MAINTAINED FOOT-CANDELES, INITIAL LEVELS ARE SLIGHTLY HIGHER

Luminaire Schedule						
Symbol	Qty	Label	Arrangement	Lum. Lumens	L.F.	Lum. Watts
1	1	A	SINGLE	12636	0.900	138
1	1	B	SINGLE	15212	0.900	138
1	4	C	SINGLE	11704	0.900	138
1	1	D	SINGLE	15973	0.900	138

FIXTURES ARE 138W 4000K LED
POLES ARE 25'-0" FOR AN OVERALL FIXTURE HEIGHT OF 27'-6" A.F.G.

- NOTES:
- 3000 PSI MINIMUM 28 DAY COMPRESSIVE STRENGTH CONCRETE WITH GRADE 60 RE-BAR.
 - IF WATER IS PRESENT IN HOLE, REMOVE BEFORE POURING CONCRETE.
 - FOUNDATION EXCAVATION SHALL BE BY 24" AUGER IN UNDISTURBED OR PROPERLY COMPACTED FILL. AN INSPECTION DURING THE CONSTRUCTION OF THE SITE LIGHT POLE MUST BE PERFORMED AND RECORDED BY A CERTIFIED SPECIAL INSPECTOR EMPLOYED BY THE OWNER.
 - MINIMUM ALLOWABLE SOIL BEARING PRESSURE 3000 PSF. NOTIFY ENGINEER IF BEARING PRESSURE IS LESS.
 - AIR ENTRAINMENT: 4 TO 6%
 - POLE TO BE CERTIFIED FOR 110 MPH WIND LOAD BY MANUFACTURER.



6" IN LANDSCAPE AREA, 24" IN PAVED AREA

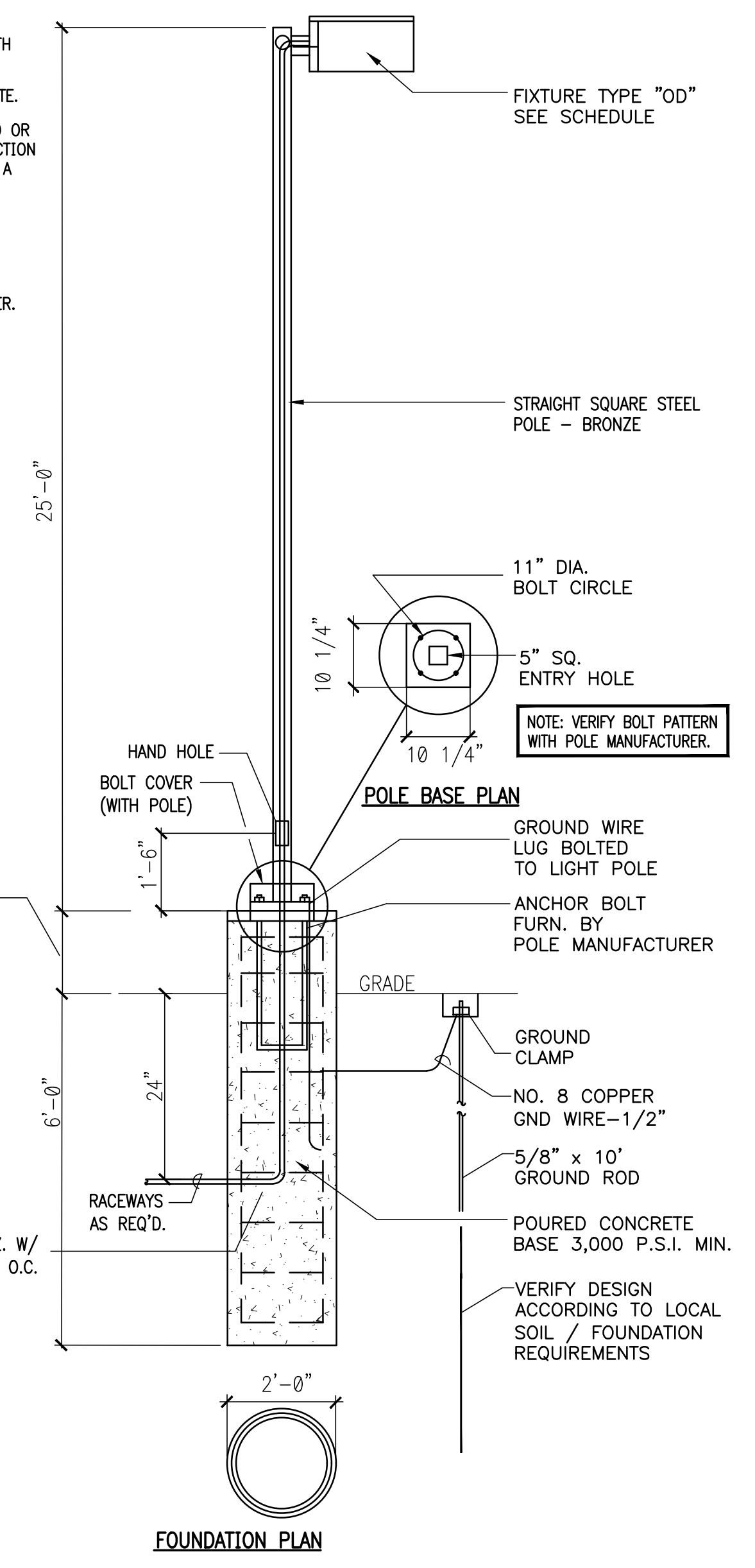
8 - #6's HORIZ. W/ #3 TIES AT 12" O.C.

LIGHTING NOTE:

THIS PLAN IS PROVIDED FOR LIGHT POLE PLACEMENT AND PHOTOMETRIC DESIGN ONLY. THE PROJECT ELECTRICAL ENGINEER WILL SPECIFY THE CIRCUITING OF THE SITE AND BUILDING LIGHTING AS WELL AS PROVIDING THE POWER AND SWITCHES IN THE BUILDING'S ELECTRICAL PANEL.

NOTES:

- REFER TO SHEET ES-1.1 FOR ELECTRICAL CIRCUIT PLAN.
- ALL POLES ARE TO BE PLACED 3'-0" BEHIND BACK OF CURBS.



Chick-fil-A

Chick-fil-A
5200 Buffington Road
Atlanta, Georgia 30349-2998

INTERPLAN

ARCHITECTURE
ENGINEERING
INTERIOR DESIGN
PROJECT MANAGEMENT

604 COURTLAND STREET
SUITE 100
ORLANDO, FLORIDA 32804
PH 407.645.5008
FX 407.629.9124

SEAL: THIS DOCUMENT IS NOT FOR CONSTRUCTION UNLESS THE ARCHITECT OR ENGINEER'S SIGNATURE AND SEAL APPEAR BELOW.

STUART ANDERSON, P.E.
GA. REG.# PE038342

CHICK-FIL-A
SAR Cherokee Place FSR
115 CHEROKEE PLACE
CARTERSVILLE, GEORGIA 30121

FSR# 00534

REVISION SCHEDULE		
NO.	DATE	DESCRIPTION

CONSULTANT PROJECT #	2017.0149
PRINTED FOR	Permit
DATE	11/2017
DRAWN BY	--
CHECKED BY	--

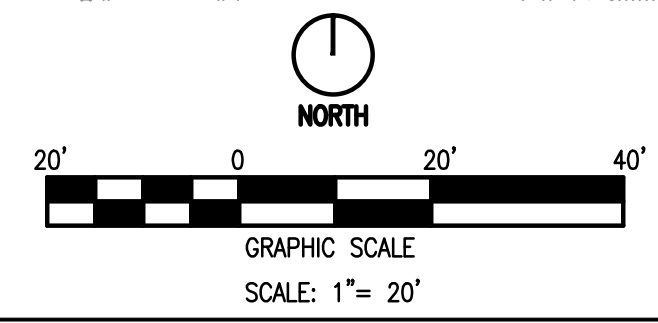
Information contained on this drawing and in all digital files produced for above named project may not be reproduced in any manner without express written or verbal consent from authorized project representatives.

SHEET
SITE ELECTRICAL /
PHOTOMETRICS PLAN

SHEET NUMBER
ES-1.0

SITE ELECTRICAL / PHOTOMETRIC PLAN

1" = 20'



P:\ChickfilA\2017\0149 - CFA - Renewal - FSU\034 - Cherokee Place, Cartersville, GA\3 CAD & Drawings\2 Construction Documents\Drawings\ES-1.0.dwg Sheet No. LAYOUT1 - Saved by mjar - Monday, March 12, 2018 4:24 PM Printed by Michael Jarrett - March 12, 2018 4:30 PM