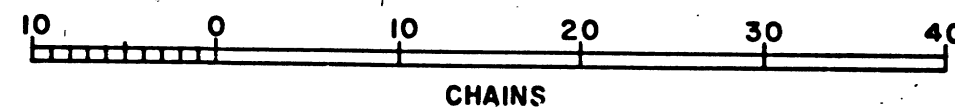
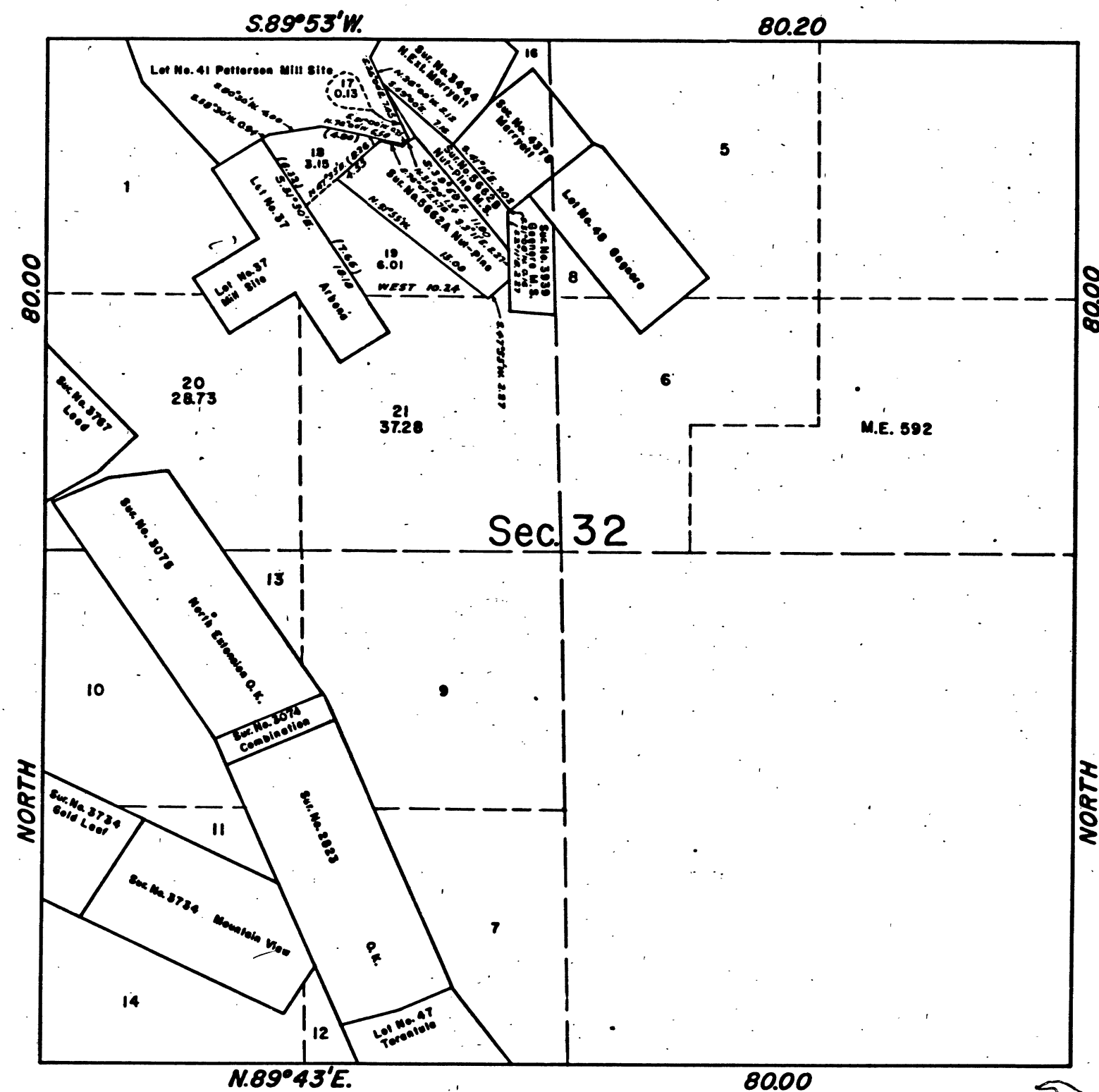
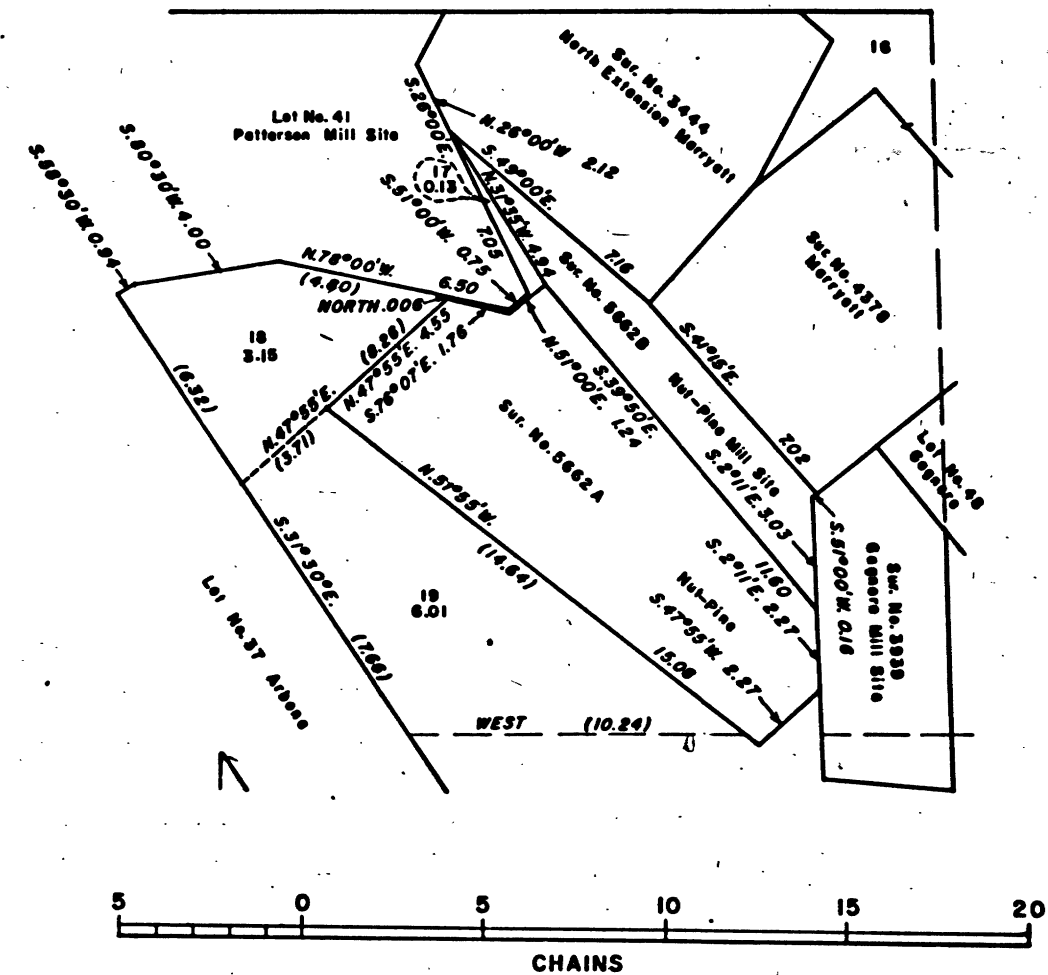


TOWNSHIP 2 NORTH, RANGE 14 EAST, OF THE MOUNT DIABLO MERIDIAN, CALIFORNIA.
SUPPLEMENTAL PLAT



ENLARGED DIAGRAM
NE $\frac{1}{4}$ NW $\frac{1}{4}$ Sec. 32

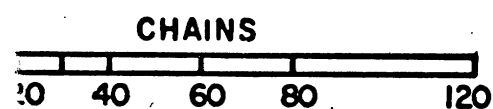


This plat, showing amended lottings created by the segregation of Mineral Survey 5662 A and B in Section 32, T. 2 N., R. 14 E., M.D.M., California, is based upon the plat of Mineral Survey No. 5662 A and B, California, dated February 15, 1923, the plat of Patterson Quartz Mine and Mill Site, dated May 18, 1876 and the plats of survey approved February 18, 1871 and January 30, 1905.

UNITED STATES DEPARTMENT OF THE INTERIOR
BUREAU OF LAND MANAGEMENT
Washington, D.C. October 23, 1957

This plat, showing amended lottings, is based upon the official records, and having been correctly prepared in accordance with the regulations, is hereby accepted.

For the Director
Earl G. Harrington
Cadastral Engineering Staff Officer



41 149
41 149 A

T2N R14E CD

BLM 67