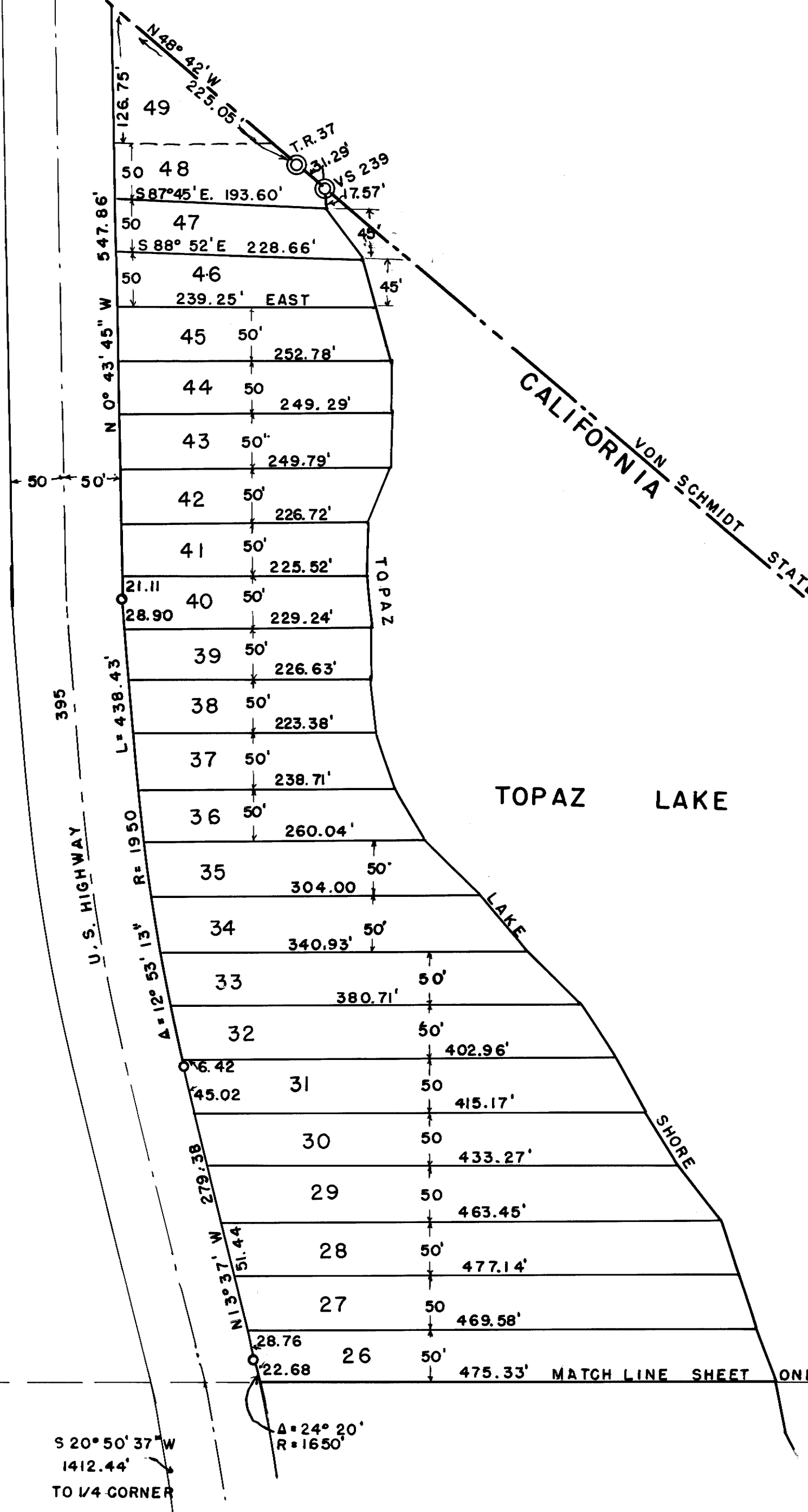


- CONCRETE MONUMENTS
- ⊙ PIPE & BRASS CAP MONUMENTS

LOT 3
IN SECTION 27
T. 10 N., R. 22 E.



PINKY'S POINT SUBDIVISION
BY L.R. PILKINGTON
IN LOT 3, & SW 1/4 SE 1/4, SECTION 27,
& NW 1/4 NE 1/4, SECTION 34, T. 10 N., R. 22 E.
MONO COUNTY, CALIFORNIA

SCALE - 1" = 100'



1338
JULY - 6 1965
Dennis R. Smith
Surveyor