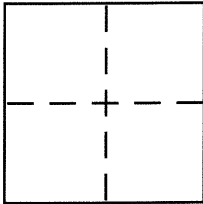


CORNER RECORDDocument Number CR 8350City of BERKELEYCounty of ALAMEDA, CaliforniaBrief Legal Description CITY OF BERKELEY MONUMENT B1761**CORNER TYPE**

Government Corner . Control ☒
 Meander . Property .
 Rancho . Other .
 Date of Survey 3-21-2016

COORDINATES (Optional)

N.
 E.
 Zone NAD27 NAD83
 NAD83 Epoch
 Elev.
 Vert. Datum: NGVD29 NAVD88
 Meas. Units: Metric Imperial

Corner – Left as found ☒ Found and tagged . Established . Reestablished . Rebuilt .

Identification and type of corner found: Evidence used to identify or procedure used to establish or reestablish the corner:
**IN COMPLIANCE WITH SECTION 8771 OF THE PROFESSIONAL LAND SURVEYORS' ACT, THIS CORNER
 RECORD IS BEING FILED TO ESTABLISH THE POSITION OF AN EXISTING MONUMENT PRIOR TO
 STREET REHABILITATION CONSTRUCTION.**

A description of the physical condition of the monument as found and as set or reset:

SEE PAGE 2

SURVEYOR'S STATEMENT

This Corner Record was prepared by me or under my direction in conformance with

the Land Surveyor's Act on 4-4-2016

Signed David M. Logan P.L.S. or R.C.E. No. 5003

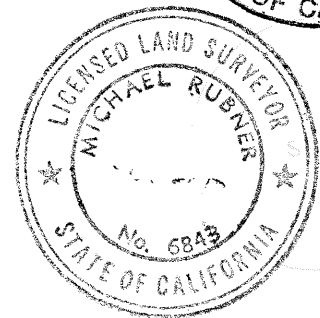
**COUNTY SURVEYOR'S STATEMENT**

This Corner Record was received 25 APRIL, 2016

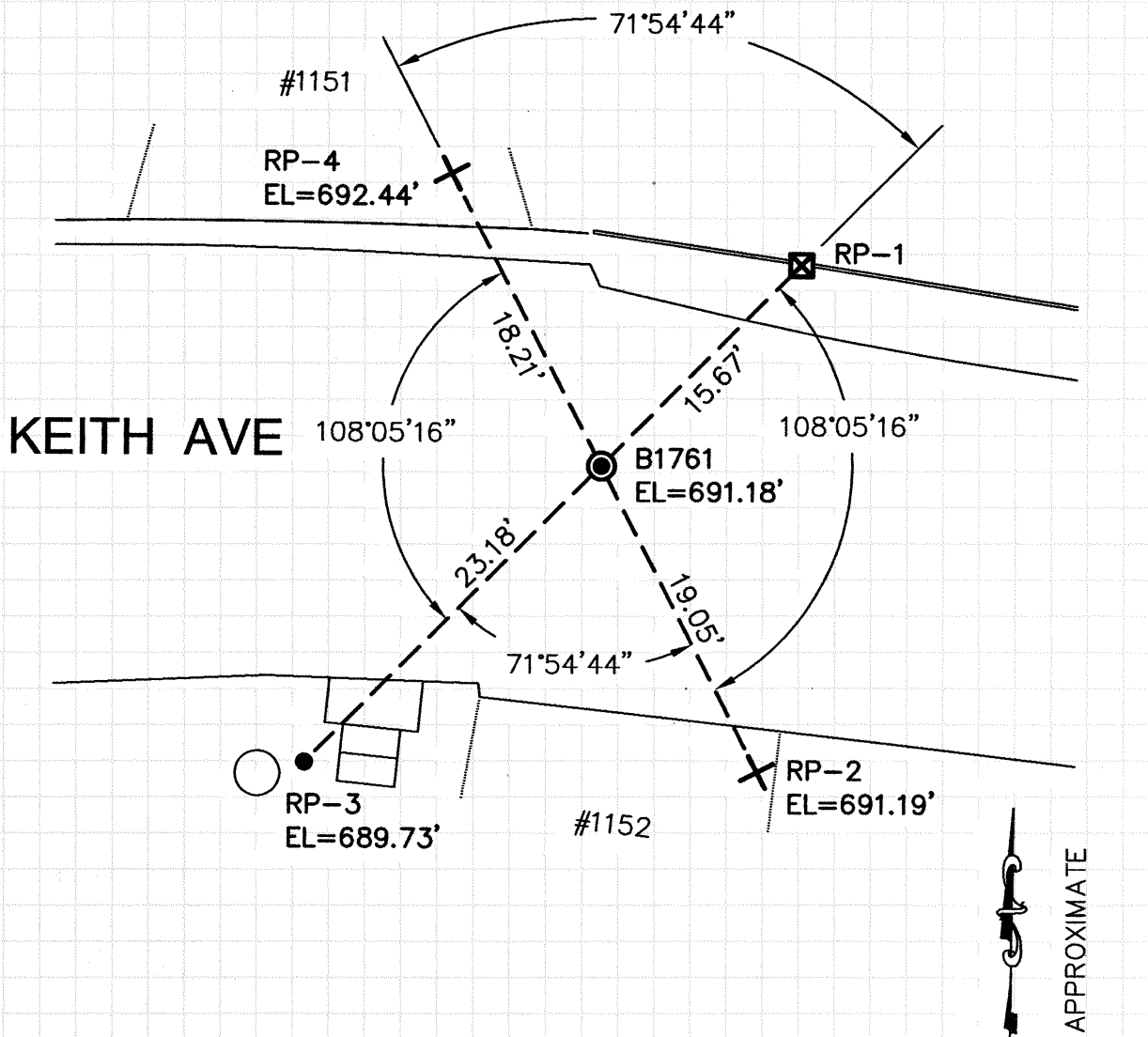
and examined and filed 6 MAY, 2016

Signed Michael Rubner P.L.S. or R.C.E. No. 6843

Title COUNTY SURVEYOR



County Surveyor's Comment



LEGEND

- 1/2" IRON PIN CITY MONUMENT IN A STANDARD MONUMENT WELL
- ✚ SET REFERENCE CROSS
- ✚ FOUND BOLT ON WOOD RETAINING WALL
- SET 5/8" REBAR WITH A BLANK PLASTIC CAP

NOTE:

THE EXISTING MONUMENT AS SHOWN IS REFERENCED BY STRAIGHT LINES BETWEEN RP-1 TO RP-3 AND RP-2 TO RP-4.