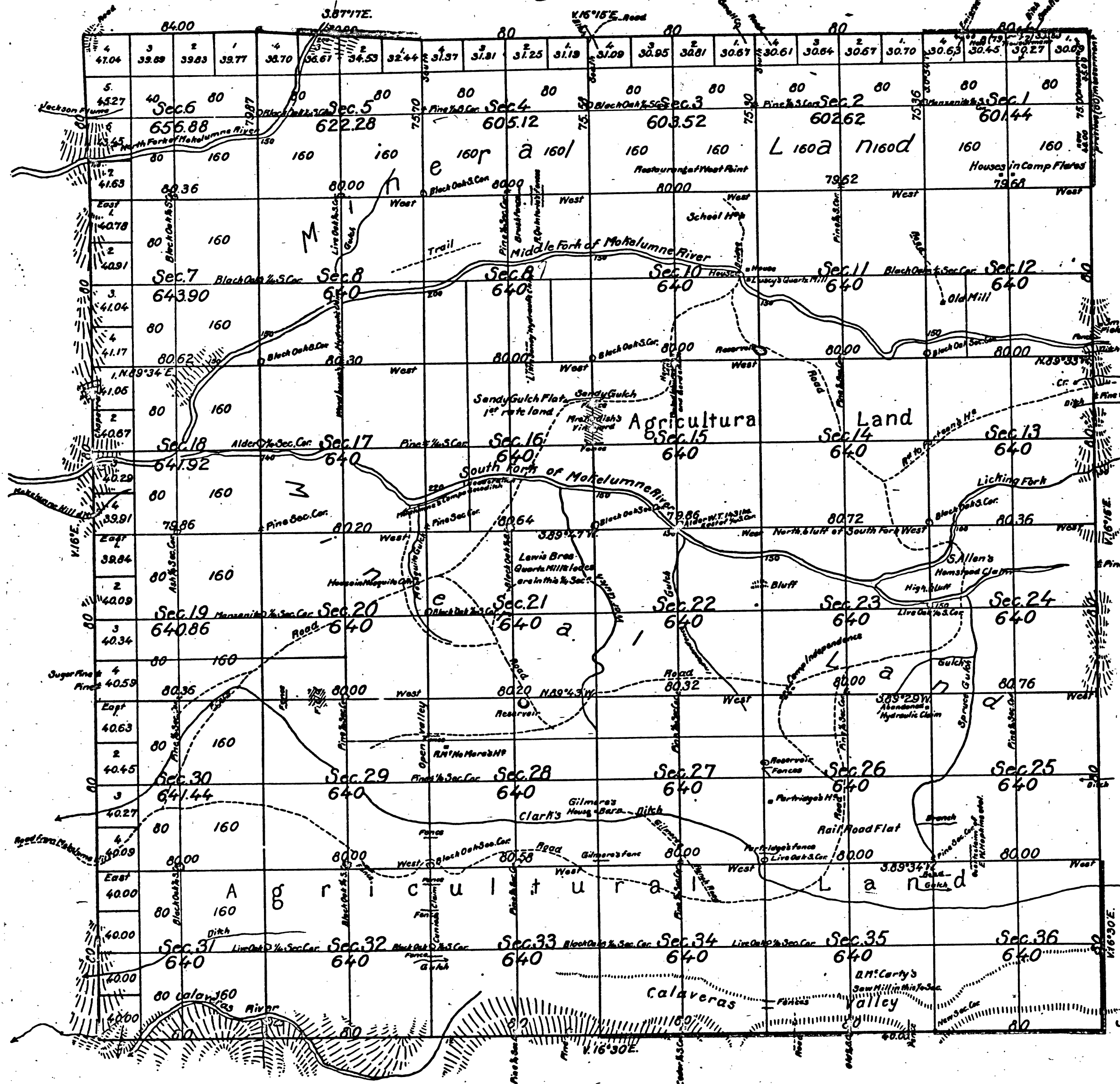


Township N°6 North, Range N°13 East, Mount Diablo Meridian.



A. G.  
1871

Aggregate Area of Public lands 22,899.98 Acres.

Note. Parts of Township lines colored blue, resurveyed by H.F. Terry are not charged in his account.

DEPARTMENT OF THE INTERIOR,  
WASHINGTON, D. C. Sept. 6, 1907.  
I hereby certify that this is a true copy  
of the plat of official survey of the lands  
to which it relates, on file in this office.

*H. F. Terry*  
Surveyor General

Section lines run at a Variation of 16°30' East.

| Surveys Designated                               | By Whom Surveyed | Date of Contract                | Amount of Surveys                           | When Surveyed                  |
|--|------------------|---------------------------------|---|--------------------------------|
| South boundary of Township                       | Fleming Amyx     | September 30 <sup>th</sup> 1858 |   | 1859                           |
| East, West & North boundary of Township          | David F. Douglas | October 19 <sup>th</sup> 1858   |   | 1859                           |
| Part of Township lines colored brown, resurveyed | Henry F. Terry   | November 12 <sup>th</sup> 1870  | 1 Mile 750 <sup>ac</sup> 001 <sup>1/2</sup> | 1870                           |
| Section lines                                    |                  |                                 | 59 Miles 66 - 23 -                          | December 3 <sup>rd</sup> 1870. |

The above Map of Township N°6 North, Range N°13 East of Mount Diablo Meridian is strictly conformable to the field notes of the Surveys thereof on file in this Office, which have been examined and approved.  
U. S. Surveyor General's Office,  
San Francisco California,  
May 2<sup>nd</sup> 1871.

*J. R. Hardenbergh*

U. S. Surv. Gen. Col<sup>o</sup>